



The Seatingshoppe®

BOOTH COLLECTION



BOOTHS

BOOTH COLLECTION

DESCRIPTION

Our booths are manufactured, assembled, and upholstered in the USA using American hardwood and are backed by our 5 year warranty against manufacturing defects. The solid wood frame and stapled corner block construction provide unmatched durability. Each of our booths comes standard with 250,000 double rub, commercial grade Esprit vinyl.

Booths are available in single, double, L shaped, half round, and $\frac{3}{4}$ round varieties and in custom configurations. You can customize your booth with our wide variety of upgraded vinyl and fabric options. Options include head roll, crumb catcher, and wood trim.

Vertical U-Booth
with Headroll



CLASSIC



VERTICAL



HORIZONTAL



BOOTHS

V BACK



WAVE



CONTEMPO



Contempo with
Wooden Legs

BOOTHS

BOOTH COLLECTION



Diamond Tufted Double
with Steel Legs

DIAMOND TUFTED



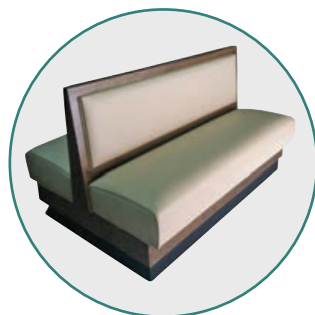
CLASSIC WOOD



PROVENCE



Provence Double



BENCH



QUICK SHIP WITH WOODEN LEGS



Quick Ship with
Wooden Legs Double

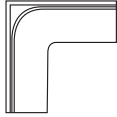
QUICK SHIP WITH WOODEN BASE



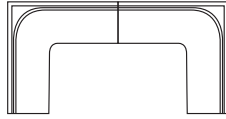
BOOTHS

BOOTH COLLECTION

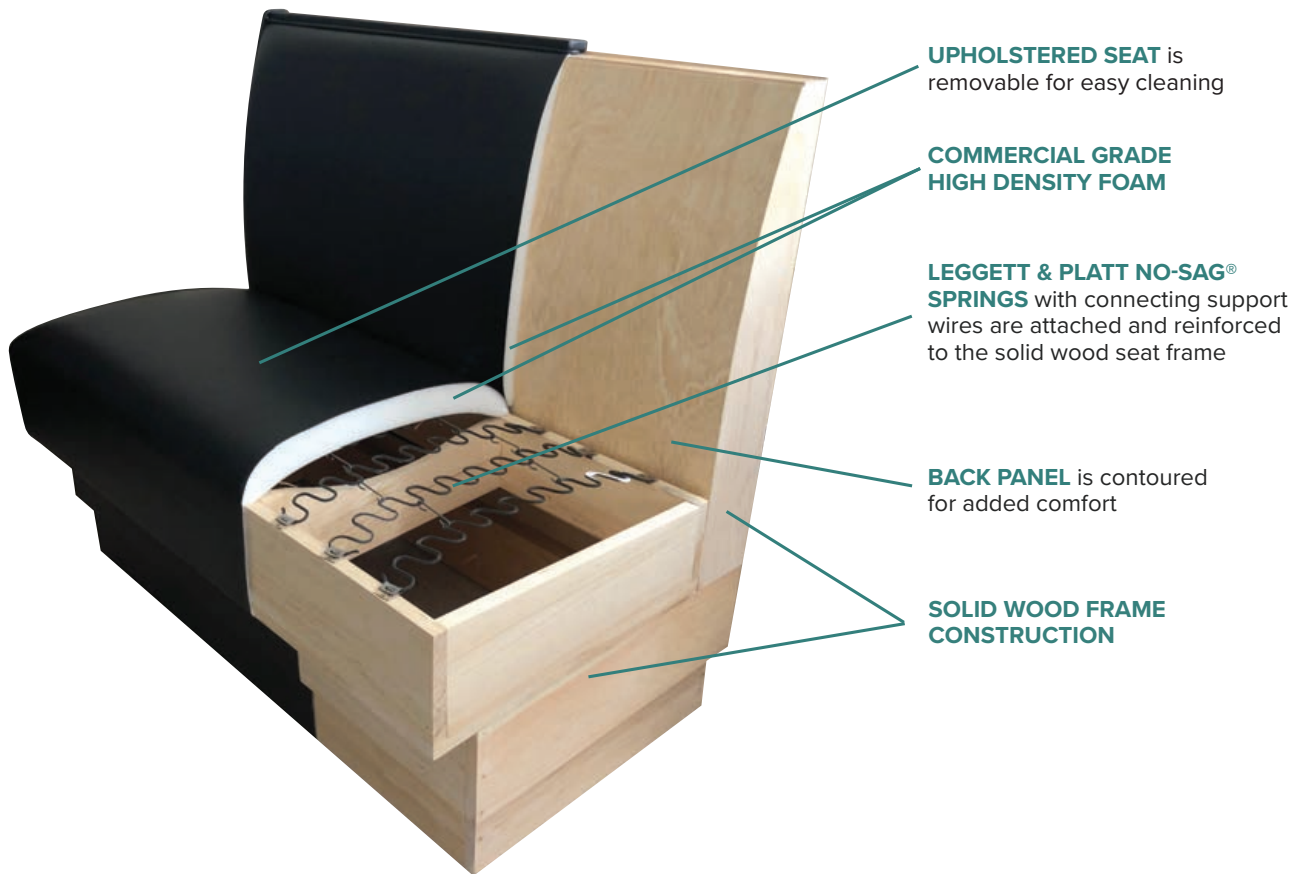
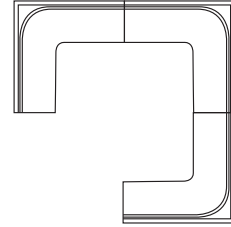
L-shape booth can also be
C-shaped rounded corner



U-shape/horse shoe booth



3/4 circle booth



UPHOLSTERED SEAT is removable for easy cleaning

COMMERCIAL GRADE HIGH DENSITY FOAM

LEGGETT & PLATT NO-SAG® SPRINGS with connecting support wires are attached and reinforced to the solid wood seat frame

BACK PANEL is contoured for added comfort

SOLID WOOD FRAME CONSTRUCTION