



# ARTISAN

## BAKERY COLLECTION

 **Cayuga** DISPLAYS













# BUILD YOUR OWN LINE-UP

**Cayuga understands product merchandising today is about fresh presentation, versatility and innovation. Retailers require that their showcase lineups have the flexibility to maximize their available space, but also enable them to create their own distinctive look. This is where the Artisan Collection comes in: customizable cases designed to connect and form continuous and unique lineups.**

The Artisan Collection reflects the latest styles and trends in the industry - helping you keep your look and brand fresh. Designed and manufactured at our own North American facility, the entire collection is fully customizable with a variety of finishes, colours, materials and other options. The modular design allows you to create a seamless line up - from 4 to 400ft.

And when you work with Cayuga Displays, you can always be confident we'll help you to select the right product and options, so that you have the food presentation that is certain to elevate your customers' experience and enhance your brand - beautifully.

*"Longo's is pleased to support Cayuga Displays. Your team's quick service/turnaround for projects has helped us with our millwork for bakery and floral in past projects. More recently your team has come up with some cost effective refrigeration solutions for our bakery and produce."*

Paul Collette,  
Longo's Support Center  
Project Manager Real Estate  
and Construction



# Table of Contents

Things to Consider	6
Display Index	8
Important Case Information	68
How to Calculate Length of Line-up	68
How to Calculate Length of Line-up	69
Actual Case Length Calculation of Line-Up	70
Case Depths	71
Showcase Construction	72
Lift-Up Glass	72
Glass Profiles	73
Square Glass Design. Why Ours is Better	74
Front Decor Panel Styles	75
Exterior Finishes	76
Adjustability of the Cases	77
Cold and Slow Refrigeration Technology	78
Serviceability	79
Finishes	
Laminate	81
Wood Stains	83
Painted Metal	84
How to Order	85



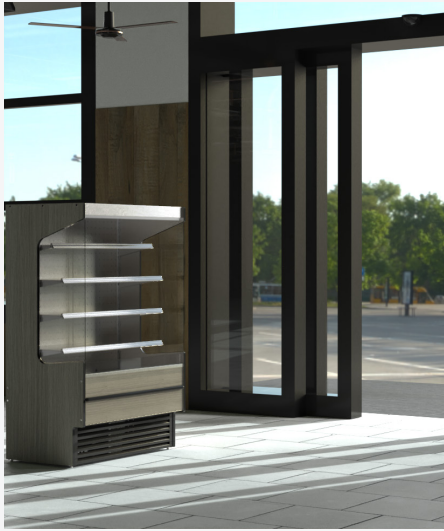
# THINGS TO CONSIDER

Showcases are designed to display your refrigerated products at 38-41°F (4-5°C). Showcases are designed to perform in environments of maximum 75°F (23°C) and 55% relative humidity.

**\*\*NOTE: FOR YOUR SHOWCASE TO FUNCTION AT PEAK EFFICIENCY YOU WILL NEED PROPER CLIMATE CONTROL AND AIR CIRCULATION\*\***

You need to consider the following when selecting a showcase and placing it in your store environment:

## 1 Consider nearby doorways and vestibules



A location near a doorway will negatively affect the airflow and holding temperature of both open and closed showcases.

## 2 Consider nearby windows



Direct sunlight will negatively affect the holding temperature of both open and closed showcases.

## 3 Consider nearby vent sources, hoods, cooking equipment and fans



HVAC ceiling vents, exhaust hoods, cooking equipment (steam heat) and ceiling fans will negatively affect the airflow of open showcases and will create condensation on the showcases if not properly managed.

## 4 Ensure your display is level and plumb



Ensure your showcase is plumb and level to allow for proper drainage of condensation water.

**Please note:** These are critical points to ensure the best results for your equipment and efficient space – and the best return on your investment!



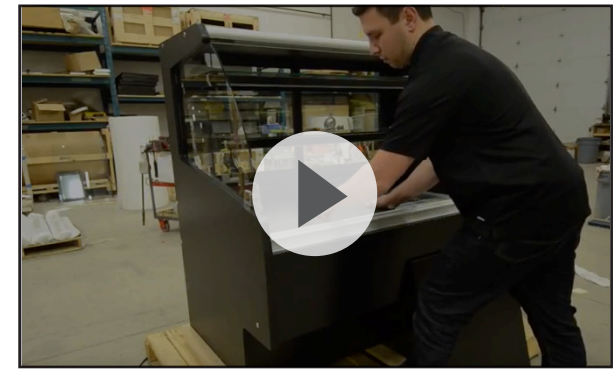
# Regular Maintenance and Cleaning

Your showcase will work at its peak performance with regular maintenance. Refer to the Owner's Manual for maintenance and cleaning instructions.

To access the Owner's manual either visit us at [cayugadisplays.com/resources/manuals](https://cayugadisplays.com/resources/manuals) or access the QR code located on the electrical box of your case. You can also check out our online maintenance video.



Watch our maintenance videos at <https://cayugadisplays.com/resources/videos>



## 5 Leave appropriate space behind display



A 6" space is required behind any showcase that is against a wall or has a rear obstruction to allow for proper air flow around your showcase.

## 6 Clean your condenser grill and pre-filter



Use the included brush to regularly wipe away dust. Too much dust will not allow the refrigeration to work properly and could result in **expensive** damage.

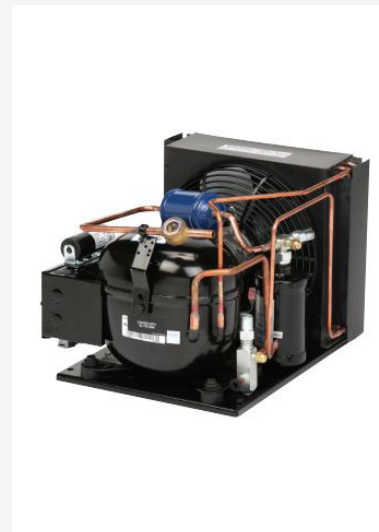
**\*\*Refer to Owner's Manual for additional case cleaning checklist\*\***

## 7 ONLY PRE-CHILLED product in case



Refrigerated displays are designed to **KEEP COLD PRODUCT COLD** - they are not designed to bring warm products down to a cold temperature. For food safety it is always imperative that warm product be properly chilled (using a blast chiller or cold room) prior to storing in the refrigerated display case.

## 8 Noise



Self-contained cases have compressors, motors and fans and these will make noise. Keeping your showcase serviced and clean will help keep the noise level under control, improve lifespan, and maintain efficiency.

## 9 Condensation on closed and open cases



Condensation is caused by warm, moist air coming into contact with cool surfaces. If the case environment is not maintained below 75°F/23°C and 55% relative humidity, condensation may occur.



# DISPLAY INDEX

## BAKERY

### BFS - Bakery Full-Service Display

Flat Front Glass with Vertical Back	14
Double Curve Front Glass with Vertical Back	16
Square Front Glass with Vertical Back and Small Display Depth	18
Square Front Glass with Vertical Back and Medium Display Depth	20
Square Front Glass with Sloped Back	22
Double Curve Front Glass High-Capacity Medium Depth Display with Vertical Back	24
Square Front Glass High-Capacity Medium Depth Display with Vertical Back	26
Square Front Glass High-Capacity Small Depth Display with Vertical Back	28

### BSS - Bakery Self-Service Display

Matches Flat Front Glass Service Display Profile	34
Matches Double Curve Front Glass Service Display Profile	36
Matches Square Front Glass Service Display Profile	38
Matches High-Capacity Double Curve Front Glass Medium Depth Service Display Profile	40
Matches High-Capacity Square Front Glass Medium Depth Service Display Profile	42
Matches High-Capacity Square Front Glass Small Depth Service Display Profile	44

### BSD - Bakery Single Level Self-Service Display

24" Front Height with a 36" Rear Height	48
24" Front Height with a 42" & 48" Rear Height	50
18" Front Height with a 30" Rear Height	52
18" Front Height with a 36" & 42" Rear Height	54
Refrigerated Display Accessories	56

### BOUW - Bakery Self-Service Display and Rear Preparation Station

Rear Cake Decorating Station with Dry Base Storage	62
--	----





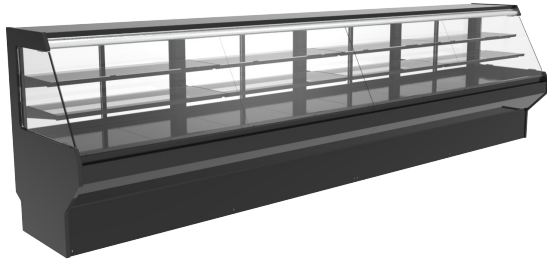
# BAKERY





# BFS - BAKERY FULL-SERVICE DISPLAY

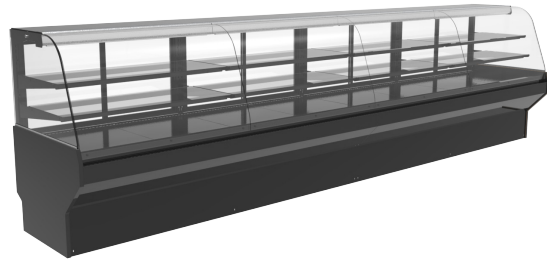
## Flat Front Glass with Vertical Back



Page 14



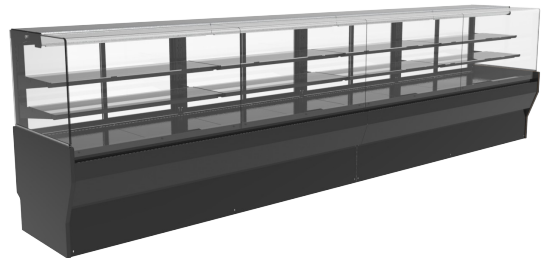
## Double Curve Front Glass with Vertical Back



Page 16



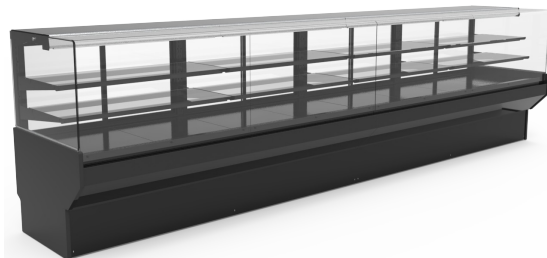
## Square Front Glass with Vertical Back and Small Display Depth



Page 18



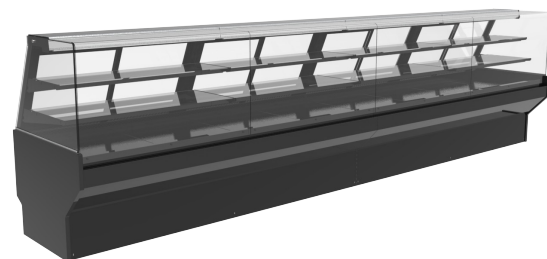
## Square Front Glass with Vertical Back and Medium Display Depth



Page 20



## Square Front Glass with Sloped Back

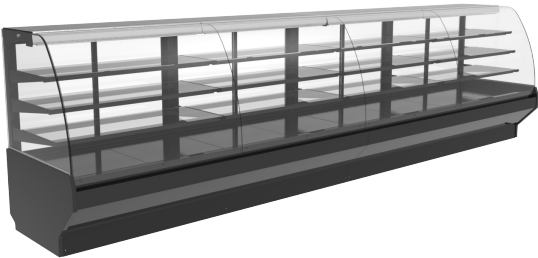


Page 22



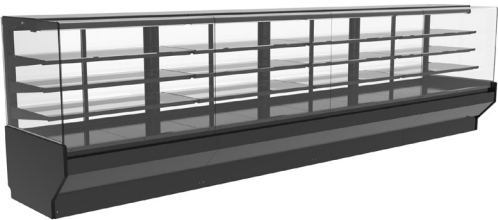


# BFS - BAKERY FULL-SERVICE DISPLAY



Double Curve Front Glass High-Capacity Medium Depth Display with Vertical Back

Page 24



Square Front Glass High-Capacity Medium Depth Display with Vertical Back

Page 26



Square Front Glass High-Capacity Small Depth Display with Vertical Back

Page 28

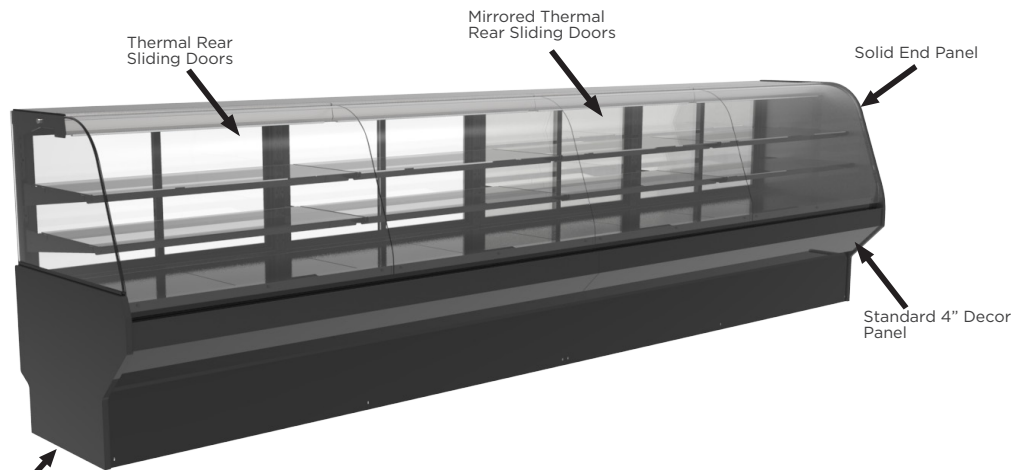




# BFS - FEATURES TO MAKE YOUR SHOWCASE WHAT YOU NEED IT TO BE

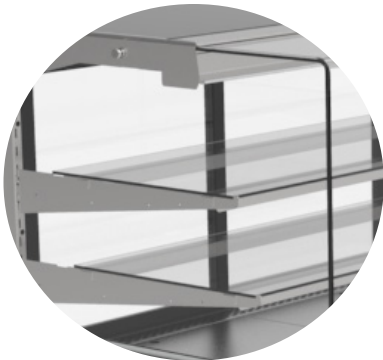


Thermal Rear Sliding Doors (Clear or Mirrored)



Contoured Tempered Glass End Panel

BFS-Double Curve front glass shown with Standard 4" Decor Panel

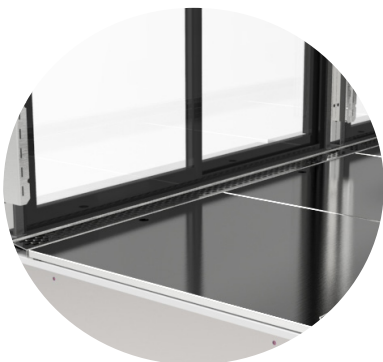


Tempered Glass Shelves

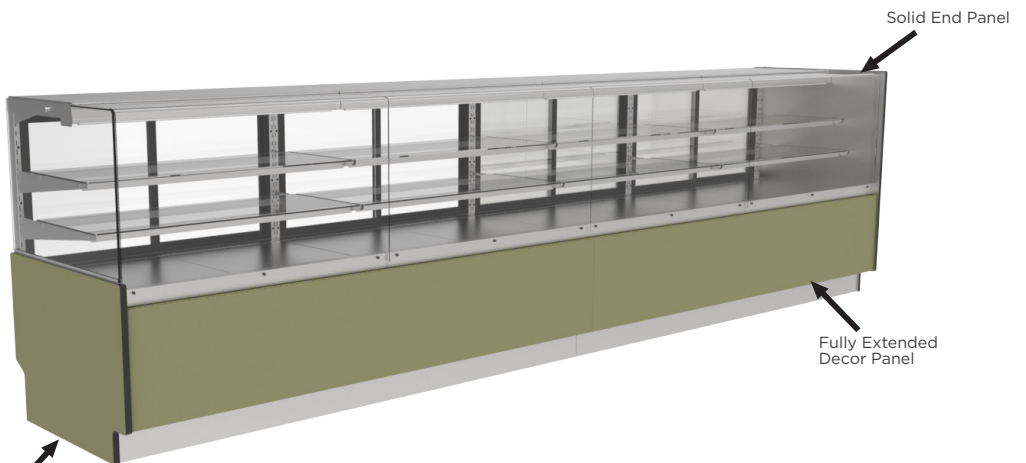


Contoured Tempered Glass End Panel

BFS-Single Curve front glass shown with Extended 12" Decor Panel



Air Duct flush with Inlays



Contoured Tempered Glass End Panel

BFS-Square front glass shown with Fully Extended Decor Panel







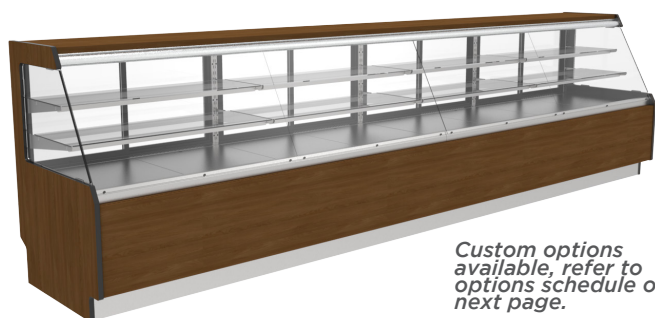
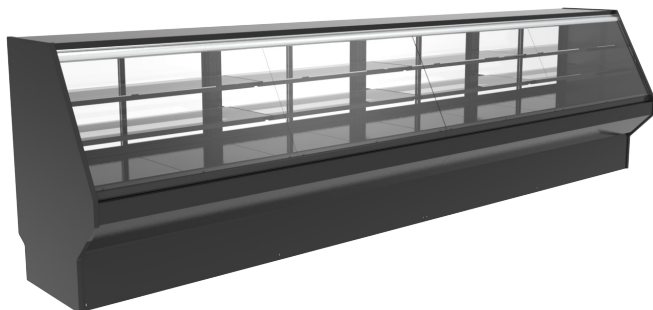
# FLAT FRONT GLASS WITH VERTICAL BACK

## BFS - BAKERY FULL-SERVICE DISPLAY

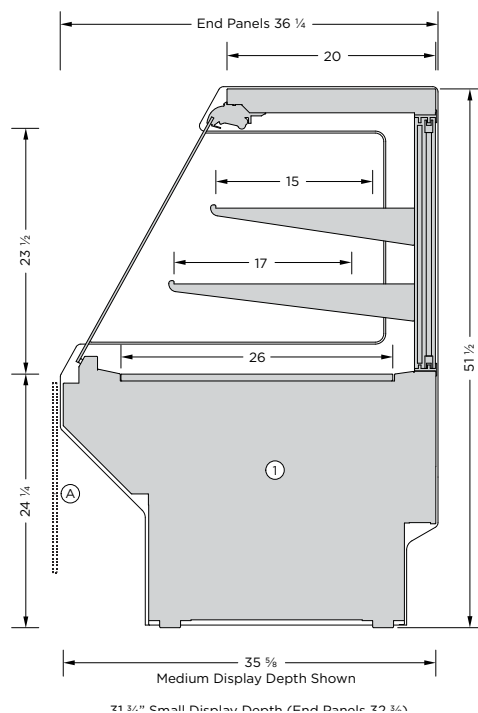
 REFRIGERATED

CREATE A DISPLAY LINE-UP OF ALMOST ANY LENGTH WITH A COMBINATION OF STANDARD DISPLAY LENGTHS

*Standard features shown*



*Custom options available, refer to options schedule on next page.*



MODEL	LENGTH
BFSV-38FL-M	38 1/4"
BFSV-48FL-M	47 7/8"
BFSV-57FL-M	57 3/8"
BFSV-57FL-M	76 1/2"
BFSV-96FL-M	95 5/8"

Length does not include end panels. Add 1" per panel.

### FEATURES:

- Three display depths available, refer to the dimensioned illustration. ①
- Remote or self-contained refrigeration system options.
- Proprietary **Cold & Slow™** refrigeration design: high volume low velocity cooling.
- A non-refrigerated display option is available.
- Many exterior finish options, powdercoat paint, brushed stainless steel, laminates, and natural wood finishes.
- Three interior finish options, textured powdercoat black, white or brushed stainless steel.
- LED light strips are mounted on the top ledge of the display area and under each shelf level.
- The LED lighting is available in various light intensities/spectrums.
- 1-15" and 1-17" adjustable tempered glass shelves.
- Hydraulic lift-up front glass hardware.
- Rear sliding doors with sealed thermal glass.
- Front base décor panel options Ⓐ provide a more customized look.
- Many display options offered. Refer to the options schedules on the next page.
- Engineered for serviceability and flexibility.
- Removeable base deck panels for easy cleaning and service.
- ETL electrical certification and NSF 7 standards.

Note: Information and specifications may change due to engineering improvements.





# FLAT FRONT GLASS WITH VERTICAL BACK

## BFS - BAKERY FULL-SERVICE DISPLAY

REFRIGERATED

### TECHNICAL SPECS (REMOTE REFRIGERATION)

MODEL	LENGTH	VOLTS	AMPS	PLUG	BUTH	SUCTION
BFSV-38FL-M	38 ¼"	115	1.9	NEMA 5-15P	2440	25F
BFSV-48FL-M	47 ⅞"	115	2.1	NEMA 5-15P	2920	25F
BFSV-57FL-M	57 ⅜"	115	2.8	NEMA 5-15P	3370	25F
BFSV-57FL-M	76 ½"	115	3.4	NEMA 5-15P	4320	25F
BFSV-96FL-M	95 ⅝"	115	3.9	NEMA 5-15P	5320	25F

TECHNICAL SPECS FOR SELF-CONTAINED REFRIGERATION AVAILABLE UPON REQUEST

### STANDARD FEATURES:

- Remote refrigeration.
- Medium display depth 35 ⅝".
- Three interior finish options, textured powdercoat black, white or brushed stainless steel.
- Black or white painted front exterior metal décor pan with a 4" vertical flat panel.
- LED light strips are mounted on the top ledge of the display area and under each shelf level.
- 1-15" and 1-17" adjustable tempered glass shelves.
- Hydraulic lift-up front glass hardware.
- Flat front glass.

### CUSTOM FEATURES:

#### EXTERIOR FINISHES

Formica laminate finish: _____	
Other laminate finish (specify): _____	
Brushed Stainless Steel	
Oak Veneer Plywood	
Birch/Maple Veneer Plywood	
- Vertical grain direction	
- Horizontal grain direction	
- Clear Finish	
- Stain Finish	
11 ½"H extended front décor panel	
18"H extended front décor panel	
1" black McCue impact bumper strip applied to the front of the display	
Other McCue impact bumper sizes and colors available	

#### END PANELS

The same interior/exterior laminate	
Brushed stainless steel interior	
Mirrored laminate interior	
Tempered glass pane	
Mirrored tempered glass pane	
1" black McCue impact bumper strip applied to the end panel	
Other McCue impact bumper sizes and colors available	

#### MISCELLANEOUS

Small display depth 31 ¾"	
Large display depth 43 ¼"	
Hydraulic lift-up hardware	
Mirroring added to the rear sliding doors	
Ambient display	
Fold-down rear work shelf	
- White nylon top	
- Brushed stainless steel top	
Front metal clip-on signage strip	
- Add metal price tag mould	
- Add plastic sign stripping	
Additional tempered glass shelf with integrated LED lighting	
Self-contained refrigeration with the new R-513A (non-ozone depleting, low global warming potential) refrigerant	

### ADDITIONAL FEATURES:

- Designed to maintain the critical temperature of the products within the display at a range of 38-41°F (3-5°C) with an ambient atmosphere of 75°F (24°C)/55% humidity. Designed for holding pre-chilled product only.
- 1-year parts and labor warranty.



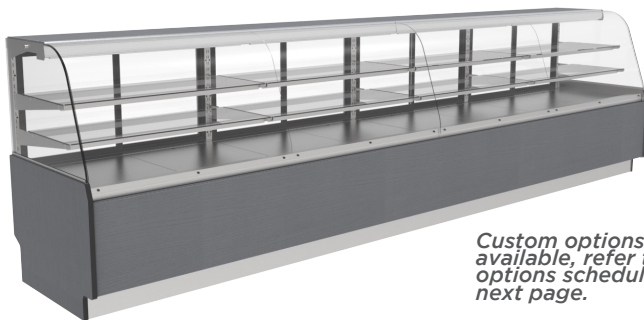
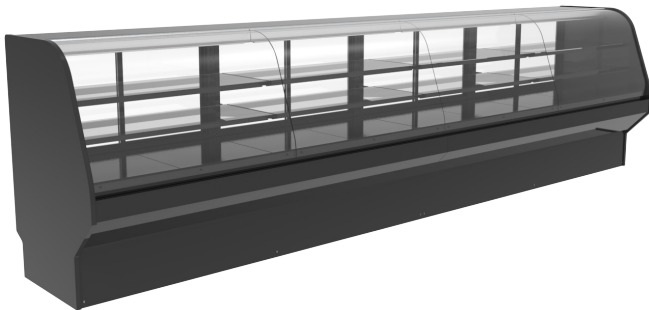
# DOUBLE CURVE FRONT GLASS WITH VERTICAL BACK

## BFS - BAKERY FULL-SERVICE DISPLAY

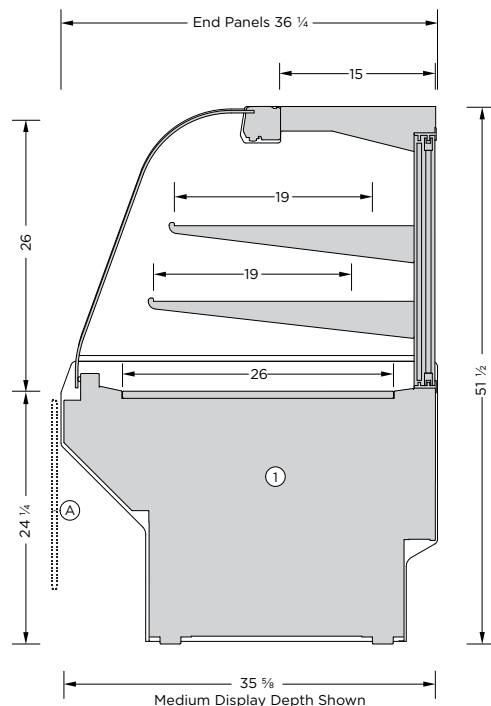
 REFRIGERATED

CREATE A DISPLAY LINE-UP OF ALMOST ANY LENGTH WITH A COMBINATION OF STANDARD DISPLAY LENGTHS

*Standard features shown*



*Custom options available, refer to options schedule on next page.*



MODEL	LENGTH
BFSV-38DC-M	38 1/4"
BFSV-48DC-M	47 7/8"
BFSV-57DC-M	57 3/8"
BFSV-76DC-M	76 1/2"
BFSV-96DC-M	95 5/8"

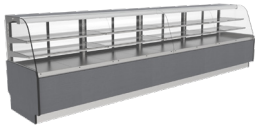
Length does not include end panels. Add 1" per panel.

### FEATURES:

- Three display depths available, refer to the dimensioned illustration. ①
- Remote or self-contained refrigeration system options.
- Proprietary **Cold & Slow™** refrigeration design: high volume low velocity cooling.
- A non-refrigerated display option is available.
- Many exterior finish options, powdercoat paint, brushed stainless steel, laminates, and natural wood finishes.
- Three interior finish options, textured powdercoat black, white or brushed stainless steel.
- LED light strips are mounted on the top ledge of the display area and under each shelf level.
- The LED lighting is available in various light intensities/spectrums.
- 2-19" adjustable tempered glass shelves.
- Hydraulic lift-up front glass hardware.
- Rear sliding doors with sealed thermal glass.
- Front base décor panel options ② provide a more customized look.
- Many display options offered. Refer to the options schedules on the next page.
- Engineered for serviceability and flexibility.
- Removeable base deck panels for easy cleaning and service.
- ETL electrical certification and NSF 7 standards.

Note: Information and specifications may change due to engineering improvements.





# DOUBLE CURVE FRONT GLASS WITH VERTICAL BACK

## BFS - BAKERY FULL-SERVICE DISPLAY

 REFRIGERATED

### TECHNICAL SPECS (REMOTE REFRIGERATION)

MODEL	LENGTH	VOLTS	AMPS	PLUG	BUTH	SUCTION
BFSV-38DC-M	38 ¼"	115	1.9	NEMA 5-15P	2440	25F
BFSV-48DC-M	47 ⅞"	115	2.1	NEMA 5-15P	2920	25F
BFSV-57DC-M	57 ⅜"	115	2.8	NEMA 5-15P	3370	25F
BFSV-76DC-M	76 ½"	115	3.4	NEMA 5-15P	4320	25F
BFSV-96DC-M	95 ⅝"	115	3.9	NEMA 5-15P	5320	25F

TECHNICAL SPECS FOR SELF-CONTAINED REFRIGERATION AVAILABLE UPON REQUEST

### STANDARD FEATURES:

- Remote refrigeration.
- Medium display depth 35 ⅝".
- Three interior finish options, textured powdercoat black, white or brushed stainless steel.
- Black or white painted front exterior metal décor pan with a 4" vertical flat panel.
- LED light strips are mounted on the top ledge of the display area and under each shelf level.
- 2-19" adjustable tempered glass shelves.
- Hydraulic lift-up front glass hardware.
- Double Curve front glass.

### CUSTOM FEATURES:

#### EXTERIOR FINISHES

Formica laminate finish: _____	
Other laminate finish (specify): _____	
Brushed Stainless Steel	
Oak Veneer Plywood	
Birch/Maple Veneer Plywood	
- Vertical grain direction	
- Horizontal grain direction	
- Clear Finish	
- Stain Finish	
11 ½"H extended front décor panel	
18"H extended front décor panel	
1" black McCue impact bumper strip applied to the front of the display	
Other McCue impact bumper sizes and colors available	

#### END PANELS

The same interior/exterior laminate	
Brushed stainless steel interior	
Mirrored laminate interior	
Tempered glass pane	
Mirrored tempered glass pane	
1" black McCue impact bumper strip applied to the end panel	
Other McCue impact bumper sizes and colors available	

#### MISCELLANEOUS

Small display depth 31 ¾"	
Large display depth 43 ¼"	
Hydraulic lift-up hardware	
Mirroring added to the rear sliding doors	
Ambient display	
Fold-down rear work shelf	
- White nylon top	
- Brushed stainless steel top	
Front metal clip-on signage strip	
- Add metal price tag mould	
- Add plastic sign stripping	
Additional tempered glass shelf with integrated LED lighting	
Self-contained refrigeration with the new R-513A (non-ozone depleting, low global warming potential) refrigerant	

### ADDITIONAL FEATURES:

- Designed to maintain the critical temperature of the products within the display at a range of 38-41°F (3-5°C) with an ambient atmosphere of 75°F (24°C)/55% humidity. Designed for holding pre-chilled product only.
- 1-year parts and labor warranty.



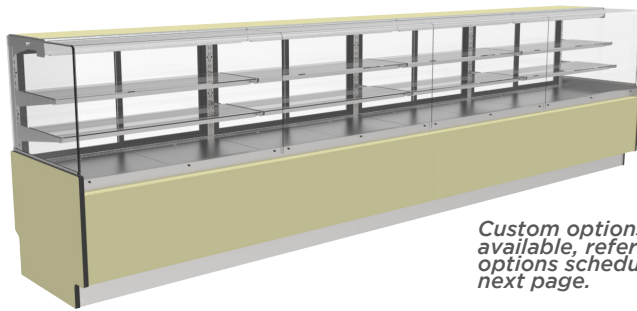
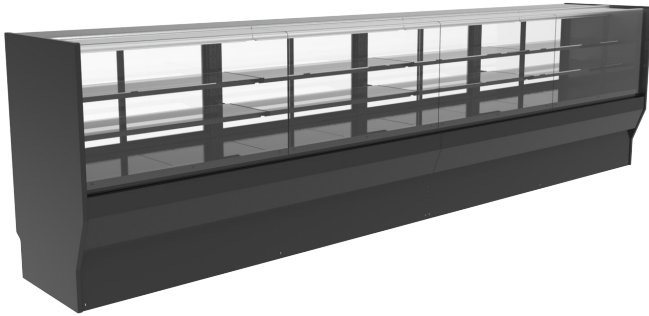
# SQUARE FRONT GLASS WITH VERTICAL BACK AND SMALL DISPLAY DEPTH

## BFS - BAKERY FULL-SERVICE DISPLAY

 REFRIGERATED

CREATE A DISPLAY LINE-UP OF ALMOST ANY LENGTH WITH A COMBINATION OF STANDARD DISPLAY LENGTHS

*Standard features shown*



*Custom options available, refer to options schedule on next page.*

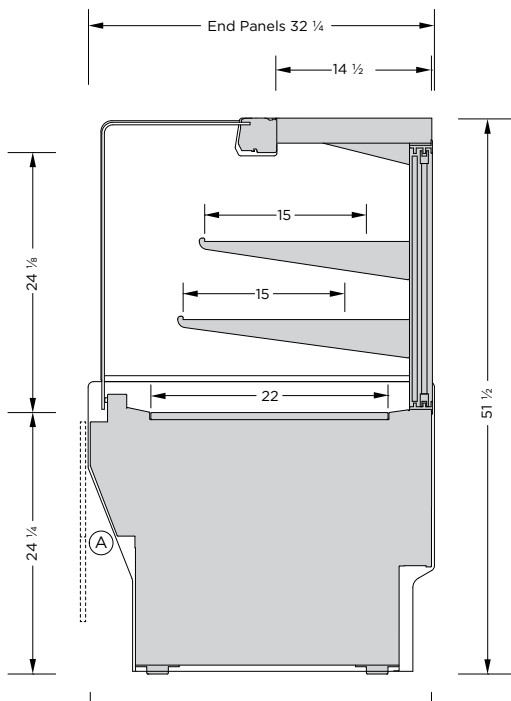
MODEL	LENGTH
BFSV-38SQ-S	38 1/4"
BFSV-48SQ-S	47 7/8"
BFSV-57SQ-S	57 3/8"
BFSV-76SQ-S	76 1/2"
BFSV-96SQ-S	95 5/8"

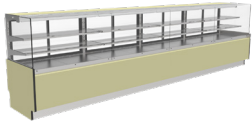
Length does not include end panels. Add 1" per panel.

### FEATURES:

- Remote or self-contained refrigeration system options.
- Proprietary **Cold & Slow™** refrigeration design: high volume low velocity cooling.
- A non-refrigerated display option is available.
- Many exterior finish options, powdercoat paint, brushed stainless steel, laminates, and natural wood finishes.
- Three interior finish options, textured powdercoat black, white or brushed stainless steel.
- LED light strips are mounted on the top ledge of the display area and under each shelf level.
- The LED lighting is available in various light intensities/spectrums.
- 2-15" adjustable tempered glass shelves.
- Hydraulic lift-up front glass hardware.
- Rear sliding doors with sealed thermal glass.
- Front base décor panel options (A) provide a more customized look.
- Many display options offered. Refer to the options schedules on the next page.
- Engineered for serviceability and flexibility.
- Removeable base deck panels for easy cleaning and service.
- ETL electrical certification and NSF 7 standards.

Note: Information and specifications may change due to engineering improvements.





# SQUARE FRONT GLASS WITH VERTICAL BACK AND SMALL DISPLAY DEPTH

## BFS - BAKERY FULL-SERVICE DISPLAY

REFRIGERATED

### TECHNICAL SPECS (REMOTE REFRIGERATION)

MODEL	LENGTH	VOLTS	AMPS	PLUG	BUTH	SUCTION
BFSV-38SQ-S	38 ¼"	115	1.9	NEMA 5-15P	2440	25F
BFSV-48SQ-S	47 ⅞"	115	2.1	NEMA 5-15P	2920	25F
BFSV-57SQ-S	57 ⅜"	115	2.8	NEMA 5-15P	3370	25F
BFSV-76SQ-S	76 ½"	115	3.4	NEMA 5-15P	4320	25F
BFSV-96SQ-S	95 ⅝"	115	3.9	NEMA 5-15P	5320	25F

TECHNICAL SPECS FOR SELF-CONTAINED REFRIGERATION AVAILABLE UPON REQUEST

### STANDARD FEATURES:

- Remote refrigeration.
- Medium display depth 31 ⅝".
- Three interior finish options, textured powdercoat black, white or brushed stainless steel.
- Black or white painted front exterior metal décor pan with a 4" vertical flat panel.
- LED light strips are mounted on the top ledge of the display area and under each shelf level.
- 2-15" adjustable tempered glass shelves.
- Hydraulic lift-up front glass hardware.
- Square front glass.

### CUSTOM FEATURES:

#### EXTERIOR FINISHES

Formica laminate finish: _____	
Other laminate finish (specify): _____	
Brushed Stainless Steel	
Oak Veneer Plywood	
Birch/Maple Veneer Plywood	
- Vertical grain direction	
- Horizontal grain direction	
- Clear Finish	
- Stain Finish	
11 ½"H extended front décor panel	
18"H extended front décor panel	
1" black McCue impact bumper strip applied to the front of the display	
Other McCue impact bumper sizes and colors available	

#### END PANELS

The same interior/exterior laminate	
Brushed stainless steel interior	
Mirrored laminate interior	
Tempered glass pane	
Mirrored tempered glass pane	
1" black McCue impact bumper strip applied to the end panel	
Other McCue impact bumper sizes and colors available	

#### MISCELLANEOUS

Hydraulic lift-up hardware	
Mirroring added to the rear sliding doors	
Ambient display	
Fold-down rear work shelf	
- White nylon top	
- Brushed stainless steel top	
Front metal clip-on signage strip	
- Add metal price tag mould	
- Add plastic sign stripping	
Additional tempered glass shelf with integrated LED lighting	
Self-contained refrigeration with the new R-513A (non-ozone depleting, low global warming potential) refrigerant	

### ADDITIONAL FEATURES:

- Designed to maintain the critical temperature of the products within the display at a range of 38-41°F (3-5°C) with an ambient atmosphere of 75°F (24°C)/55% humidity. Designed for holding pre-chilled product only.
- 1-year parts and labor warranty



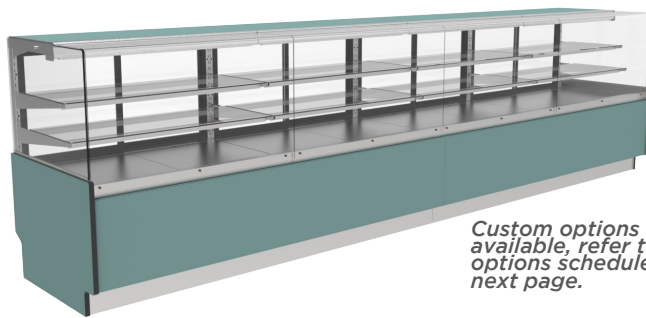
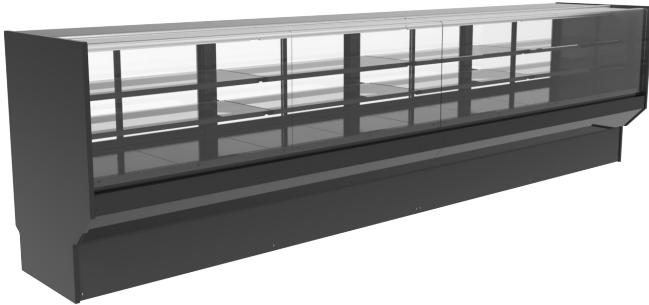
# SQUARE FRONT GLASS WITH VERTICAL BACK AND MEDIUM DISPLAY DEPTH

## BFS - BAKERY FULL-SERVICE DISPLAY

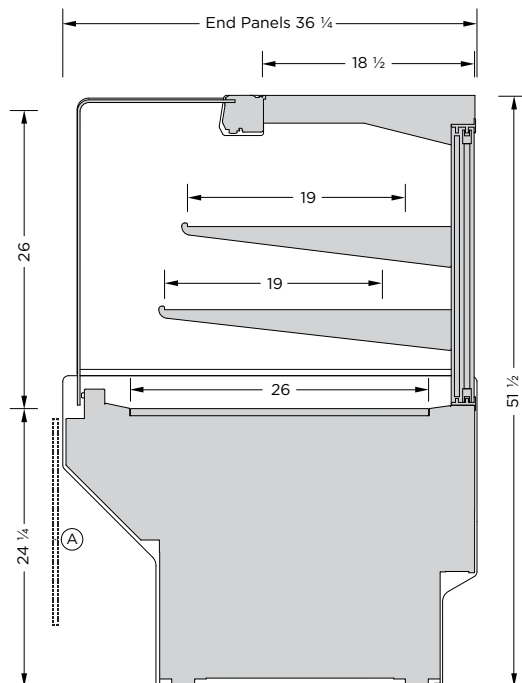
 REFRIGERATED

CREATE A DISPLAY LINE-UP OF ALMOST ANY LENGTH WITH A COMBINATION OF STANDARD DISPLAY LENGTHS

*Standard features shown*



*Custom options available, refer to options schedule on next page.*



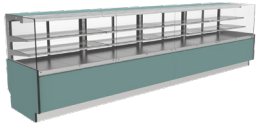
MODEL	LENGTH
BFSV-38SQ-M	38 1/4"
BFSV-48SQ-M	47 7/8"
BFSV-57SQ-M	57 3/8"
BFSV-76SQ-M	76 1/2"
BFSV-96SQ-M	95 5/8"

Length does not include end panels. Add 1" per panel.

### FEATURES:

- Remote or self-contained refrigeration system options.
- Proprietary **Cold & Slow™** refrigeration design: high volume low velocity cooling.
- A non-refrigerated display option is available.
- Many exterior finish options, powdercoat paint, brushed stainless steel, laminates, and natural wood finishes.
- Three interior finish options, textured powdercoat black, white or brushed stainless steel.
- LED light strips are mounted on the top ledge of the display area and under each shelf level.
- The LED lighting is available in various light intensities/spectrums.
- 2-19" adjustable tempered glass shelves.
- Hydraulic lift-up front glass hardware.
- Rear sliding doors with sealed thermal glass.
- Front base décor panel options  provide a more customized look.
- Many display options offered. Refer to the options schedules on the next page.
- Engineered for serviceability and flexibility.
- Removeable base deck panels for easy cleaning and service.
- ETL electrical certification and NSF 7 standards.

Note: Information and specifications may change due to engineering improvements.



# SQUARE FRONT GLASS WITH VERTICAL BACK AND MEDIUM DISPLAY DEPTH

## BFS - BAKERY FULL-SERVICE DISPLAY

REFRIGERATED

TECHNICAL SPECS (REMOTE REFRIGERATION)						
MODEL	LENGTH	VOLTS	AMPS	PLUG	BUTH	SUCTION
BFSV-38SQ-M	38 ¼"	115	1.9	NEMA 5-15P	2440	25F
BFSV-48SQ-M	47 ⅞"	115	2.1	NEMA 5-15P	2920	25F
BFSV-57SQ-M	57 ⅞"	115	2.8	NEMA 5-15P	3370	25F
BFSV-76SQ-M	76 ½"	115	3.4	NEMA 5-15P	4320	25F
BFSV-96SQ-M	95 ⅝"	115	3.9	NEMA 5-15P	5320	25F

TECHNICAL SPECS FOR SELF-CONTAINED REFRIGERATION AVAILABLE UPON REQUEST

### STANDARD FEATURES:

- Remote refrigeration.
- Medium display depth 35 ⅝".
- Three interior finish options, textured powdercoat black, white or brushed stainless steel.
- Black or white painted front exterior metal décor pan with a 4" vertical flat panel.
- LED light strips are mounted on the top ledge of the display area and under each shelf level.
- 2-19" adjustable tempered glass shelves.
- Hydraulic lift-up front glass hardware.
- Square front glass.

### CUSTOM FEATURES:

EXTERIOR FINISHES	
Formica laminate finish: _____	
Other laminate finish (specify): _____	
Brushed Stainless Steel	
Oak Veneer Plywood	
Birch/Maple Veneer Plywood	
- Vertical grain direction	
- Horizontal grain direction	
- Clear Finish	
- Stain Finish	
11 ½"H extended front décor panel	
18"H extended front décor panel	
1" black McCue impact bumper strip applied to the front of the display	
Other McCue impact bumper sizes and colors available	

### END PANELS

The same interior/exterior laminate	
Brushed stainless steel interior	
Mirrored laminate interior	
Tempered glass pane	
Mirrored tempered glass pane	
1" black McCue impact bumper strip applied to the end panel	
Other McCue impact bumper sizes and colors available	

### MISCELLANEOUS

Hydraulic lift-up hardware	
Mirroring added to the rear sliding doors	
Ambient display	
Fold-down rear work shelf	
- White nylon top	
- Brushed stainless steel top	
Front metal clip-on signage strip	
- Add metal price tag mould	
- Add plastic sign stripping	
Additional tempered glass shelf with integrated LED lighting	
Self-contained refrigeration with the new R-513A (non-ozone depleting, low global warming potential) refrigerant	

### ADDITIONAL FEATURES:

- Designed to maintain the critical temperature of the products within the display at a range of 38-41°F (3-5°C) with an ambient atmosphere of 75°F (24°C)/55% humidity. Designed for holding pre-chilled product only.
- 1-year parts and labor warranty.

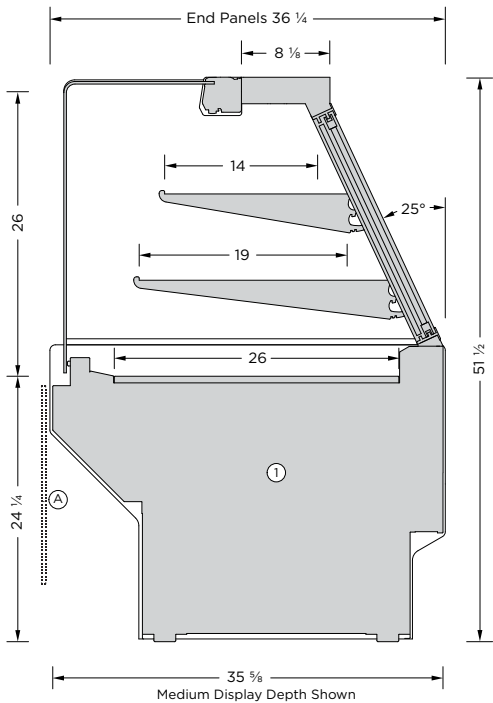
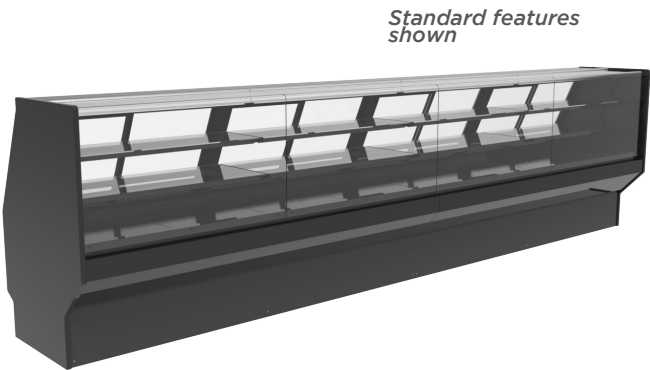


# SQUARE FRONT GLASS WITH SLOPED BACK

## BFS - BAKERY FULL-SERVICE DISPLAY

 REFRIGERATED

CREATE A DISPLAY LINE-UP OF ALMOST ANY LENGTH WITH A COMBINATION OF STANDARD DISPLAY LENGTHS



MODEL	LENGTH
BFSS-38SQ-M	38 1/4"
BFSS-48SQ-M	47 7/8"
BFSS-57SQ-M	57 3/8"
BFSS-76SQ-M	76 1/2"
BFSS-96SQ-M	95 5/8"

Length does not include end panels. Add 1" per panel.

### FEATURES:

- Large display depth available, refer to the dimensioned illustration. ①
- Remote or self-contained refrigeration system options.
- Proprietary **Cold & Slow™** refrigeration design: high volume low velocity cooling.
- A non-refrigerated display option is available.
- Many exterior finish options, powdercoat paint, brushed stainless steel, laminates, and natural wood finishes.
- Three interior finish options, textured powdercoat black, white or brushed stainless steel.
- LED light strips are mounted on the top ledge of the display area and under each shelf level.
- The LED lighting is available in various light intensities/spectrums.
- 1-14" and 1-19" adjustable tempered glass shelves.
- Hydraulic lift-up front glass hardware.
- Rear sliding doors with sealed thermal glass.
- Front base décor panel options ② provide a more customized look.
- Many display options offered. Refer to the options schedules on the next page.
- Engineered for serviceability and flexibility.
- Removeable base deck panels for easy cleaning and service.
- ETL electrical certification and NSF 7 standards.

Note: Information and specifications may change due to engineering improvements.



# SQUARE FRONT GLASS WITH SLOPED BACK

## BFS - BAKERY FULL-SERVICE DISPLAY

REFRIGERATED

### TECHNICAL SPECS (REMOTE REFRIGERATION)

MODEL	LENGTH	VOLTS	AMPS	PLUG	BUTH	SUCTION
BFSS-38SQ-M	38 ¼"	115	1.9	NEMA 5-15P	2440	25F
BFSS-48SQ-M	47 ⅞"	115	2.1	NEMA 5-15P	2920	25F
BFSS-57SQ-M	57 ⅜"	115	2.8	NEMA 5-15P	3370	25F
BFSS-76SQ-M	76 ½"	115	3.4	NEMA 5-15P	4320	25F
BFSS-96SQ-M	95 ⅝"	115	3.9	NEMA 5-15P	5320	25F

TECHNICAL SPECS FOR SELF-CONTAINED REFRIGERATION AVAILABLE UPON REQUEST

### STANDARD FEATURES:

- Remote refrigeration.
- Medium display depth 35 ⅝".
- Three interior finish options, textured powdercoat black, white or brushed stainless steel.
- Black or white painted front exterior metal décor pan with a 4" vertical flat panel.
- LED light strips are mounted on the top ledge of the display area and under each shelf level.
- 1-14" and 1-19" adjustable tempered glass shelves.
- Hydraulic lift-up front glass hardware.
- Square front glass.

### CUSTOM FEATURES:

#### EXTERIOR FINISHES

Formica laminate finish: _____	
Other laminate finish (specify): _____	
Brushed Stainless Steel	
Oak Veneer Plywood	
Birch/Maple Veneer Plywood	
- Vertical grain direction	
- Horizontal grain direction	
- Clear Finish	
- Stain Finish	
11 ½"H extended front décor panel	
18"H extended front décor panel	
1" black McCue impact bumper strip applied to the front of the display	
Other McCue impact bumper sizes and colors available	

#### END PANELS

The same interior/exterior laminate	
Brushed stainless steel interior	
Mirrored laminate interior	
Tempered glass pane	
Mirrored tempered glass pane	
1" black McCue impact bumper strip applied to the end panel	
Other McCue impact bumper sizes and colors available	

#### MISCELLANEOUS

Large display depth 43 ¼"	
Mirroring added to the rear sliding doors	
Ambient display	
Fold-down rear work shelf	
- White nylon top	
- Brushed stainless steel top	
Front metal clip-on signage strip	
- Add metal price tag mould	
- Add plastic sign stripping	
Additional tempered glass shelf with integrated LED lighting	
Self-contained refrigeration with the new R-513A (non-ozone depleting, low global warming potential) refrigerant	

### ADDITIONAL FEATURES:

- Designed to maintain the critical temperature of the products within the display at a range of 38-41°F (3-5°C) with an ambient atmosphere of 75°F (24°C)/55% humidity. Designed for holding pre-chilled product only.
- 1-year parts and labor warrant



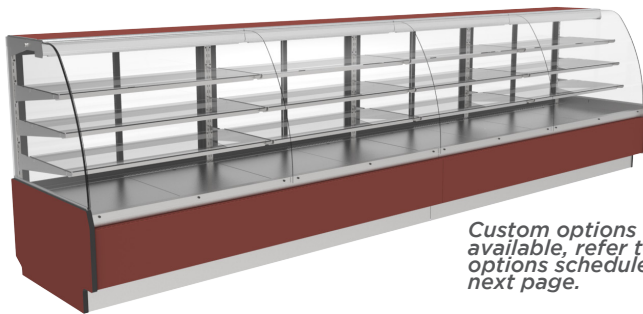
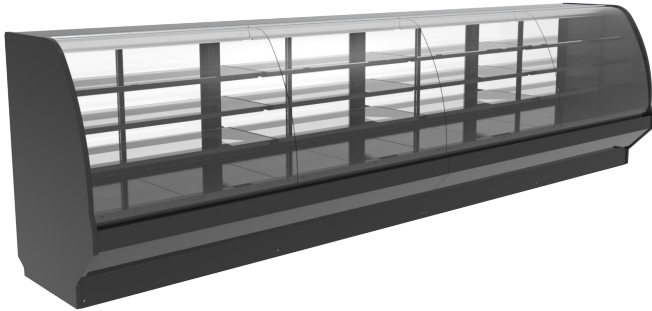
# DOUBLE CURVE FRONT GLASS HIGH-CAPACITY MEDIUM DEPTH DISPLAY WITH VERTICAL BACK

## BFS - BAKERY FULL-SERVICE DISPLAY

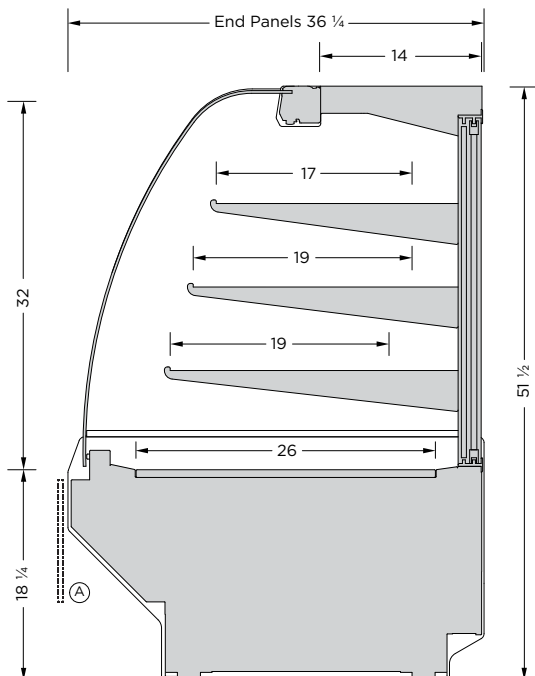
 REFRIGERATED

CREATE A DISPLAY LINE-UP OF ALMOST ANY LENGTH WITH A COMBINATION OF STANDARD DISPLAY LENGTHS

*Standard features shown*




*Custom options available, refer to options schedule on next page.*



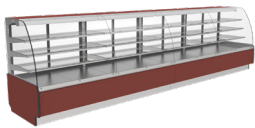
MODEL	LENGTH
BFSH-38DC-M	38 1/4"
BFSH-48DC-M	47 7/8"
BFSH-57DC-M	57 3/8"
BFSH-76DC-M	76 1/2"
BFSH-96DC-M	95 5/8"

Length does not include end panels. Add 1" per panel.

### FEATURES:

- Remote refrigeration option only for this display profile.
- Proprietary **Cold & Slow™** refrigeration design: high volume low velocity cooling.
- A non-refrigerated display option is available.
- Many exterior finish options, powdercoat paint, brushed stainless steel, laminates, and natural wood finishes.
- Three interior finish options, textured powdercoat black, white or brushed stainless steel.
- LED light strips are mounted on the top ledge of the display area and under each shelf level.
- The LED lighting is available in various light intensities/spectrums.
- 1-17" and 2-19" adjustable tempered glass shelves.
- Hydraulic lift-up front glass hardware.
- Rear sliding doors with sealed thermal glass.
- Front base décor panel options  provide a more customized look.
- Many display options offered. Refer to the options schedules on the next page.
- Engineered for serviceability and flexibility.
- Removeable base deck panels for easy cleaning and service.
- ETL electrical certification and NSF 7 standards.

Note: Information and specifications may change due to engineering improvements.



# DOUBLE CURVE FRONT GLASS HIGH-CAPACITY MEDIUM DEPTH DISPLAY WITH VERTICAL BACK

## BFS - BAKERY FULL-SERVICE DISPLAY

REFRIGERATED

### TECHNICAL SPECS (REMOTE REFRIGERATION)

MODEL	LENGTH	VOLTS	AMPS	PLUG	BUTH	SUCTION
BFSH-38DC-M	38 ¼"	115	1.9	NEMA 5-15P	2440	25F
BFSH-48DC-M	47 ⅞"	115	2.1	NEMA 5-15P	2920	25F
BFSH-57DC-M	57 ⅞"	115	2.8	NEMA 5-15P	3370	25F
BFSH-76DC-M	76 ½"	115	3.4	NEMA 5-15P	4320	25F
BFSH-96DC-M	95 ⅞"	115	3.9	NEMA 5-15P	5320	25F

### STANDARD FEATURES:

- Remote refrigeration.
- Medium display depth 35 ⅝".
- Three interior finish options, textured powdercoat black, white or brushed stainless steel.
- Black or white painted front exterior metal décor pan with a 4" vertical flat panel.
- LED light strips are mounted on the top ledge of the display area and under each shelf level.
- 1-17" and 2-19" adjustable tempered glass shelves.
- Hydraulic lift-up front glass hardware.
- Double Curve front glass

### CUSTOM FEATURES:

#### EXTERIOR FINISHES

Formica laminate finish: _____	
Other laminate finish (specify): _____	
Brushed Stainless Steel	
Oak Veneer Plywood	
Birch/Maple Veneer Plywood	
- Vertical grain direction	
- Horizontal grain direction	
- Clear Finish	
- Stain Finish	
11 ½"H extended front décor panel	
1" black McCue impact bumper strip applied to the front of the display	
Other McCue impact bumper sizes and colors available	

#### END PANELS

The same interior/exterior laminate	
Brushed stainless steel interior	
Mirrored laminate interior	
Tempered glass pane	
Mirrored tempered glass pane	
1" black McCue impact bumper strip applied to the end panel	
Other McCue impact bumper sizes and colors available	

#### MISCELLANEOUS

Mirroring added to the rear sliding doors	
Ambient display	
Fold-down rear work shelf	
- White nylon top	
- Brushed stainless steel top	
Front metal clip-on signage strip	
- Add metal price tag mould	
- Add plastic sign stripping	
Additional tempered glass shelf with integrated LED lighting	

### ADDITIONAL FEATURES:

- Designed to maintain the critical temperature of the products within the display at a range of 38-41°F (3-5°C) with an ambient atmosphere of 75°F (24°C)/55% humidity. Designed for holding pre-chilled product only.
- 1-year parts and labor warranty.



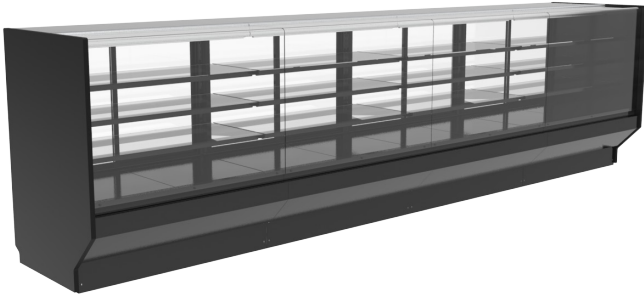
# SQUARE FRONT GLASS HIGH-CAPACITY MEDIUM DEPTH DISPLAY WITH VERTICAL BACK

## BFS - BAKERY FULL-SERVICE DISPLAY

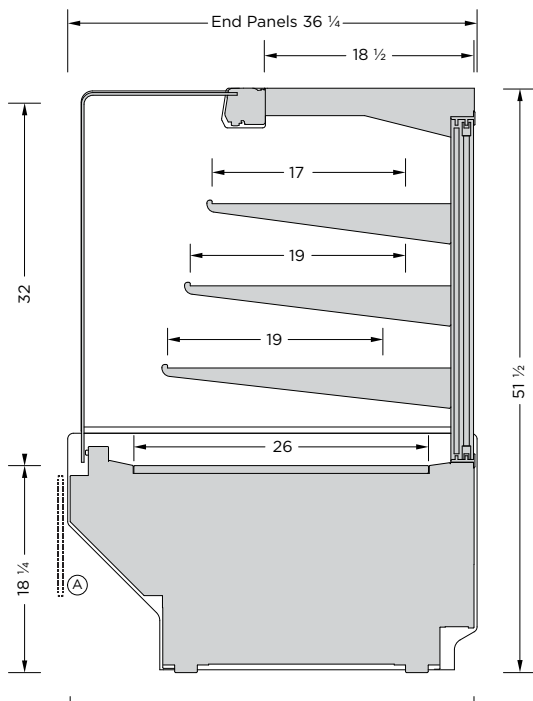
 REFRIGERATED

CREATE A DISPLAY LINE-UP OF ALMOST ANY LENGTH WITH A COMBINATION OF STANDARD DISPLAY LENGTHS

*Standard features shown*



*Custom options available, refer to options schedule on next page.*



MODEL	LENGTH
BFSH-38SQ-M	38 1/4"
BFSH-48SQ-M	47 7/8"
BFSH-57SQ-M	57 3/8"
BFSH-76SQ-M	76 1/2"
BFSH-96SQ-M	95 5/8"

Length does not include end panels. Add 1" per panel.

### FEATURES:

- Remote refrigeration option only for this display profile.
- Proprietary **Cold & Slow™** refrigeration design: high volume low velocity cooling.
- A non-refrigerated display option is available.
- Many exterior finish options, powdercoat paint, brushed stainless steel, laminates, and natural wood finishes.
- Three interior finish options, textured powdercoat black, white or brushed stainless steel.
- LED light strips are mounted on the top ledge of the display area and under each shelf level.
- The LED lighting is available in various light intensities/spectrums.
- 1-17" and 2-19" adjustable tempered glass shelves.
- Hydraulic lift-up front glass hardware.
- Rear sliding doors with sealed thermal glass.
- Front base décor panel options <sup>(A)</sup> provide a more customized look.
- Many display options offered. Refer to the options schedules on the next page.
- Engineered for serviceability and flexibility.
- Removeable base deck panels for easy cleaning and service.
- ETL electrical certification and NSF 7 standards.

Note: Information and specifications may change due to engineering improvements.



# SQUARE FRONT GLASS HIGH-CAPACITY MEDIUM DEPTH DISPLAY WITH VERTICAL BACK

## BFS - BAKERY FULL-SERVICE DISPLAY

 REFRIGERATED

### TECHNICAL SPECS (REMOTE REFRIGERATION)

MODEL	LENGTH	VOLTS	AMPS	PLUG	BUTH	SUCTION
BFSH-38SQ-M	38 ¼"	115	1.9	NEMA 5-15P	2440	25F
BFSH-48SQ-M	47 ⅞"	115	2.1	NEMA 5-15P	2920	25F
BFSH-57SQ-M	57 ⅜"	115	2.8	NEMA 5-15P	3370	25F
BFSH-76SQ-M	76 ½"	115	3.4	NEMA 5-15P	4320	25F
BFSH-96SQ-M	95 ⅝"	115	3.9	NEMA 5-15P	5320	25F

### STANDARD FEATURES:

- Remote refrigeration.
- Medium display depth 35 ⅝".
- Three interior finish options, textured powdercoat black, white or brushed stainless steel.
- Black or white painted front exterior metal décor pan with a 4" vertical flat panel.
- LED light strips are mounted on the top ledge of the display area and under each shelf level.
- 1-17" and 2-19" adjustable tempered glass shelves.
- Hydraulic lift-up front glass hardware.
- Square front glass.

### CUSTOM FEATURES:

#### EXTERIOR FINISHES

Formica laminate finish: _____	
Other laminate finish (specify): _____	
Brushed Stainless Steel	
Oak Veneer Plywood	
Birch/Maple Veneer Plywood	
- Vertical grain direction	
- Horizontal grain direction	
- Clear Finish	
- Stain Finish	
11 ½"H extended front décor panel	
1" black McCue impact bumper strip applied to the front of the display	
Other McCue impact bumper sizes and colors available	

#### END PANELS

The same interior/exterior laminate	
Brushed stainless steel interior	
Mirrored laminate interior	
Tempered glass pane	
Mirrored tempered glass pane	
1" black McCue impact bumper strip applied to the end panel	
Other McCue impact bumper sizes and colors available	

#### MISCELLANEOUS

Mirroring added to the rear sliding doors	
Ambient display	
Front metal clip-on signage strip	
- Add metal price tag mould	
- Add plastic sign stripping	
Additional tempered glass shelf with integrated LED lighting	

### ADDITIONAL FEATURES:

- Designed to maintain the critical temperature of the products within the display at a range of 38-41°F (3-5°C) with an ambient atmosphere of 75°F (24°C)/55% humidity. Designed for holding pre-chilled product only.
- 1-year parts and labor warranty



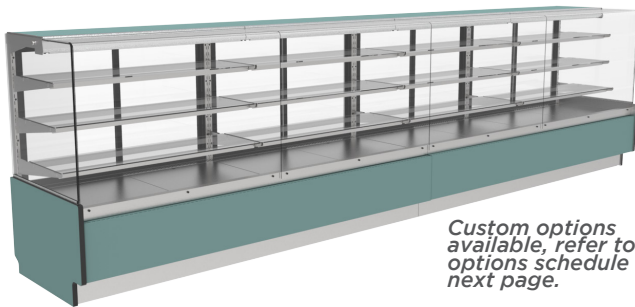
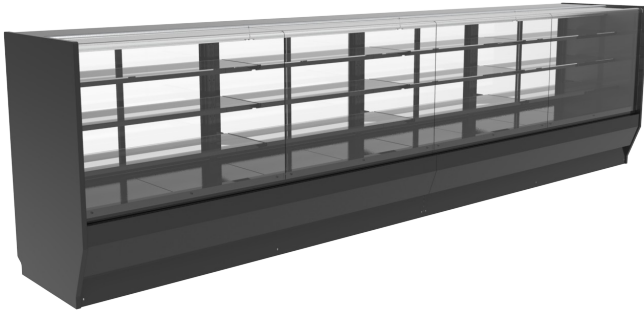
# SQUARE FRONT GLASS HIGH-CAPACITY SMALL DEPTH DISPLAY WITH VERTICAL BACK

## BFS - BAKERY FULL-SERVICE DISPLAY

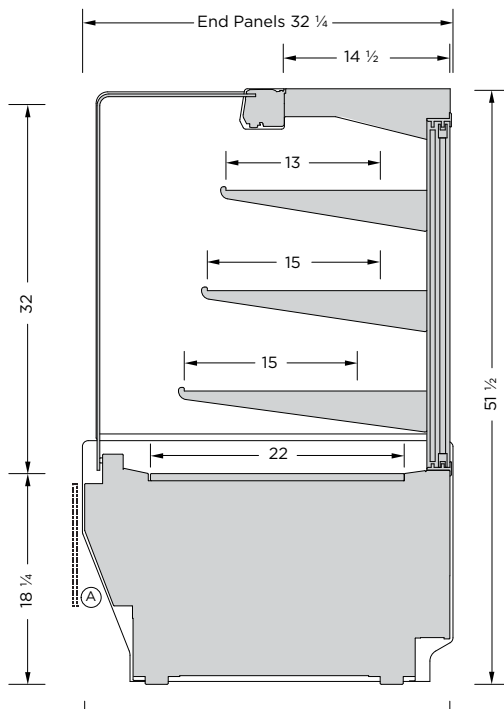
 REFRIGERATED

CREATE A DISPLAY LINE-UP OF ALMOST ANY LENGTH WITH A COMBINATION OF STANDARD DISPLAY LENGTHS

*Standard features shown*




*Custom options available, refer to options schedule on next page.*



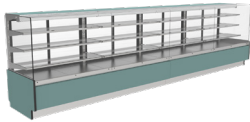
MODEL	LENGTH
BFSH-38SQ-S	38 1/4"
BFSH-48SQ-S	47 7/8"
BFSH-57SQ-S	57 3/8"
BFSH-76SQ-S	76 1/2"
BFSH-96SQ-S	95 5/8"

Length does not include end panels. Add 1" per panel.

### FEATURES:

- Remote refrigeration option only for this display profile.
- Proprietary **Cold & Slow™** refrigeration design: high volume low velocity cooling.
- A non-refrigerated display option is available.
- Many exterior finish options, powdercoat paint, brushed stainless steel, laminates, and natural wood finishes.
- Three interior finish options, textured powdercoat black, white or brushed stainless steel.
- LED light strips are mounted on the top ledge of the display area and under each shelf level.
- The LED lighting is available in various light intensities/spectrums.
- 1-13" and 2-15" adjustable tempered glass shelves.
- Hydraulic lift-up front glass hardware.
- Rear sliding doors with sealed thermal glass.
- Front base décor panel options  provide a more customized look.
- Many display options offered. Refer to the options schedules on the next page.
- Engineered for serviceability and flexibility.
- Removeable base deck panels for easy cleaning and service.
- ETL electrical certification and NSF 7 standards.

Note: Information and specifications may change due to engineering improvements.



# SQUARE FRONT GLASS HIGH-CAPACITY SMALL DEPTH DISPLAY WITH VERTICAL BACK

## BFS - BAKERY FULL-SERVICE DISPLAY

 REFRIGERATED

### TECHNICAL SPECS (REMOTE REFRIGERATION)

MODEL	LENGTH	VOLTS	AMPS	PLUG	BUTH	SUCTION
BFSH-38SQ-S	38 ¼"	115	1.9	NEMA 5-15P	2440	25F
BFSH-48SQ-S	47 ⅞"	115	2.1	NEMA 5-15P	2920	25F
BFSH-57SQ-S	57 ⅞"	115	2.8	NEMA 5-15P	3370	25F
BFSH-76SQ-S	76 ½"	115	3.4	NEMA 5-15P	4320	25F
BFSH-96SQ-S	95 ⅝"	115	3.9	NEMA 5-15P	5320	25F

### STANDARD FEATURES:

- Remote refrigeration.
- Small display depth 31 ⅝".
- Three interior finish options, textured powdercoat black, white or brushed stainless steel.
- Black or white painted front exterior metal décor pan with a 4" vertical flat panel.
- LED light strips are mounted on the top ledge of the display area and under each shelf level.
- 1-13" and 2-15" adjustable tempered glass shelves.
- Hydraulic lift-up front glass hardware.
- Square front glass.

### CUSTOM FEATURES:

#### EXTERIOR FINISHES

Formica laminate finish: _____	
Other laminate finish (specify): _____	
Brushed Stainless Steel	
Oak Veneer Plywood	
Birch/Maple Veneer Plywood	
- Vertical grain direction	
- Horizontal grain direction	
- Clear Finish	
- Stain Finish	
11 ½"H extended front décor panel	
1" black McCue impact bumper strip applied to the front of the display	
Other McCue impact bumper sizes and colors available	

#### END PANELS

The same interior/exterior laminate	
Brushed stainless steel interior	
Mirrored laminate interior	
Tempered glass pane	
Mirrored tempered glass pane	
1" black McCue impact bumper strip applied to the end panel	
Other McCue impact bumper sizes and colors available	

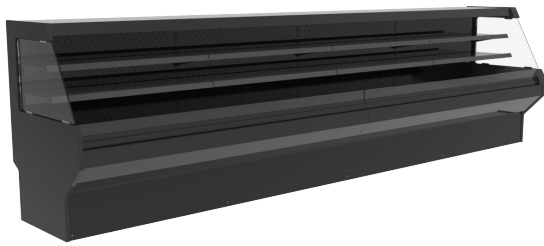
#### MISCELLANEOUS

Mirroring added to the rear sliding doors	
Ambient display	
Front metal clip-on signage strip	
- Add metal price tag mould	
- Add plastic sign stripping	
Additional tempered glass shelf with integrated LED lighting	

### ADDITIONAL FEATURES:

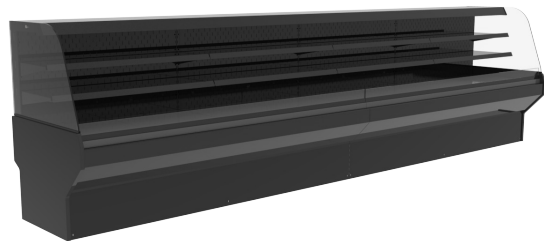
- Designed to maintain the critical temperature of the products within the display at a range of 38-41°F (3-5°C) with an ambient atmosphere of 75°F (24°C)/55% humidity. Designed for holding pre-chilled product only.
- 1-year parts and labor warranty.

# BSS - BAKERY SELF-SERVICE DISPLAY



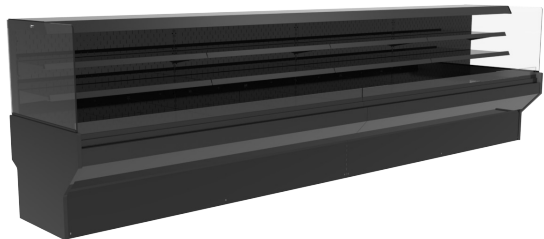
Matches Flat Front Glass Service Display Profile

Page 34



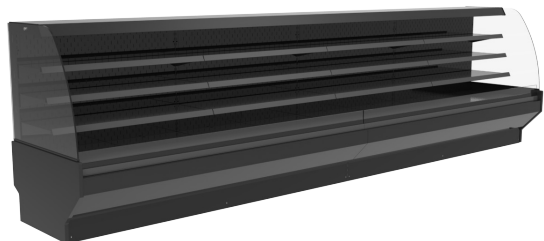
Matches Double Curve Front Glass Service Display Profile

Page 36



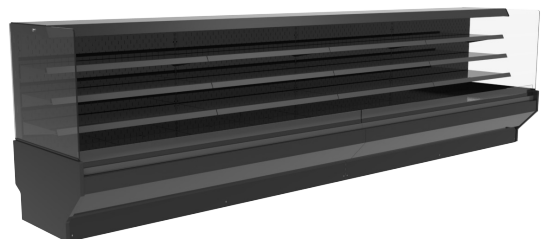
Matches Square Front Glass Service Display Profile

Page 38



Matches High-Capacity Double Curve Front Glass Medium Depth Service Display Profile

Page 40



Matches High-Capacity Square Front Glass Medium Depth Service Display Profile

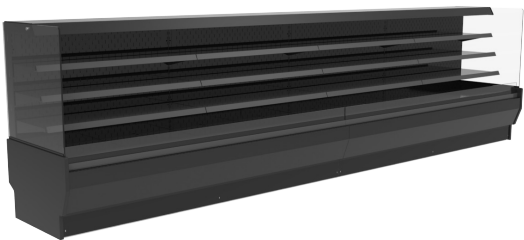
Page 42





# BSS - BAKERY SELF-SERVICE DISPLAY

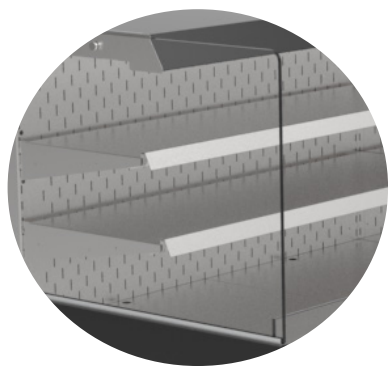
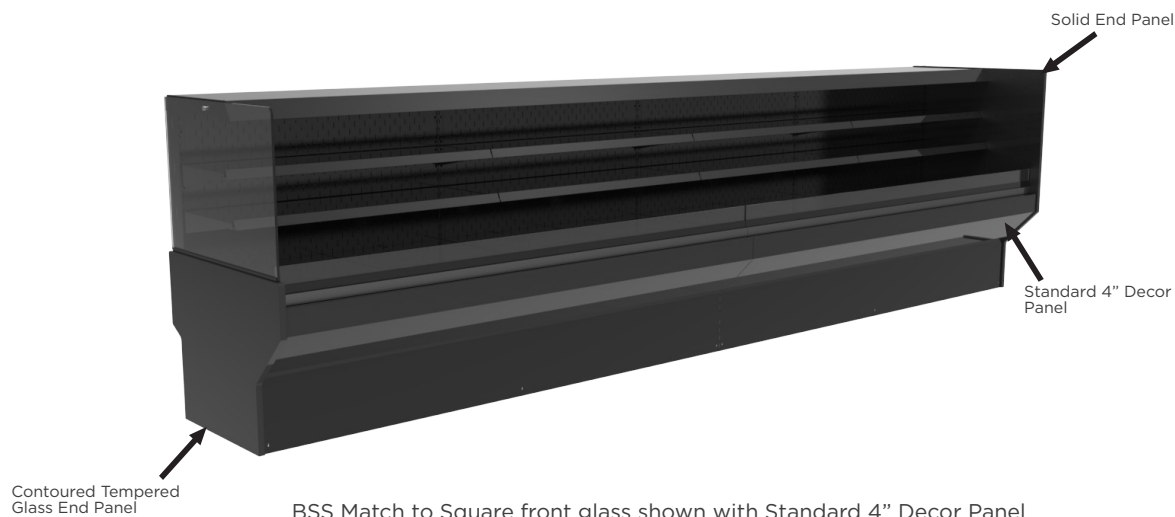
Matches Square High-Capacity Front Glass Small  
Depth Service Display Profile



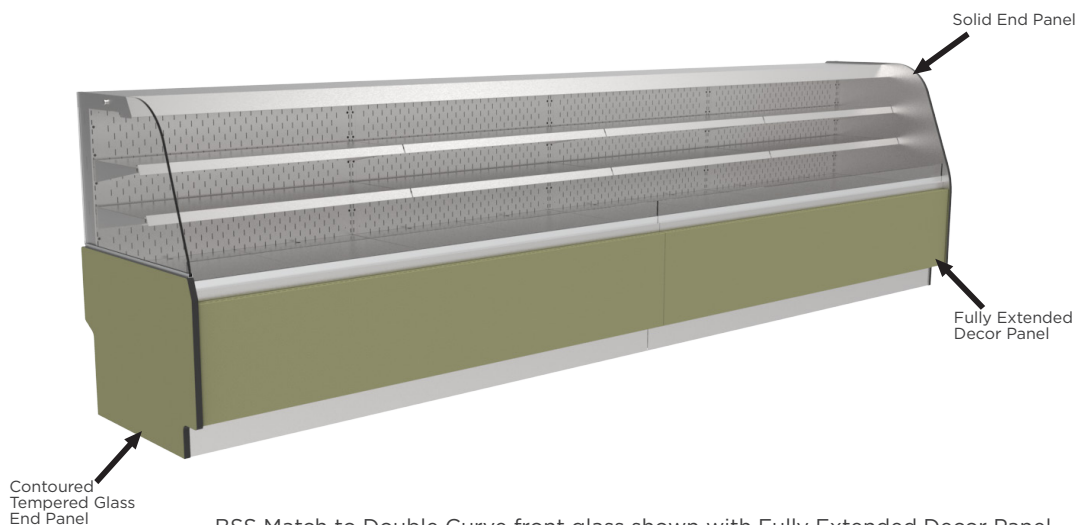
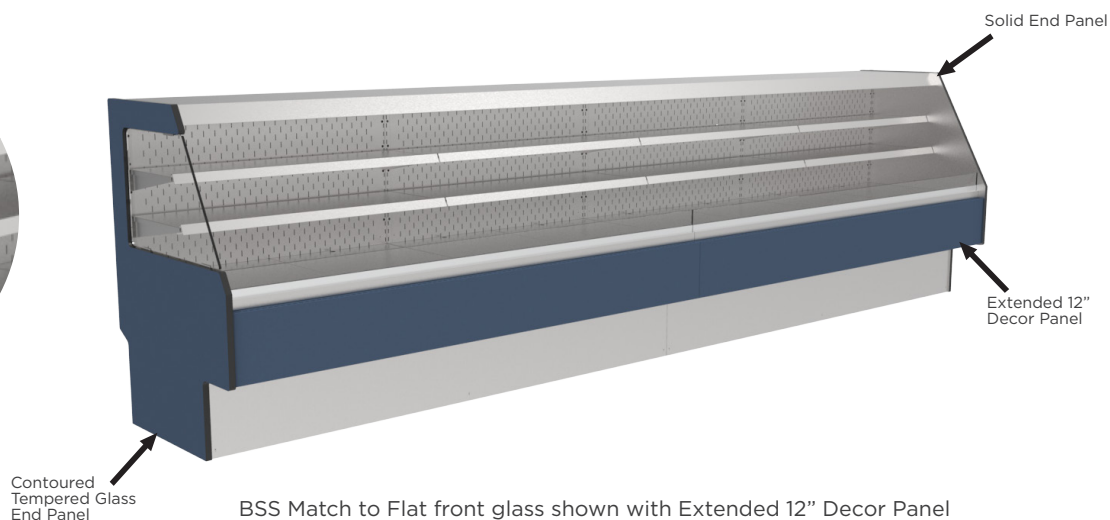
Page 44



# BSS - FEATURES TO MAKE YOUR SHOWCASE WHAT YOU NEED IT TO BE



Metal Shelves







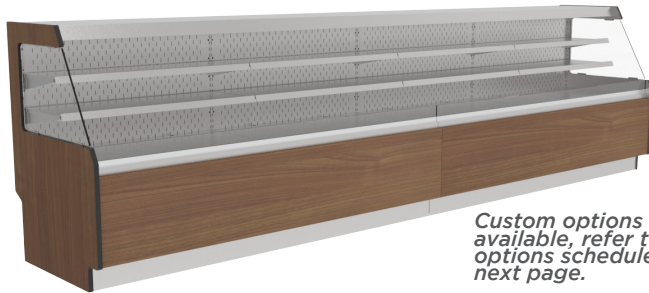
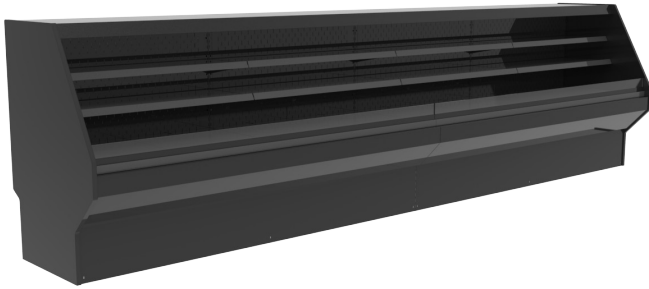
# MATCHES FLAT FRONT GLASS SERVICE DISPLAY PROFILE

## BSS - BAKERY SELF-SERVICE DISPLAY

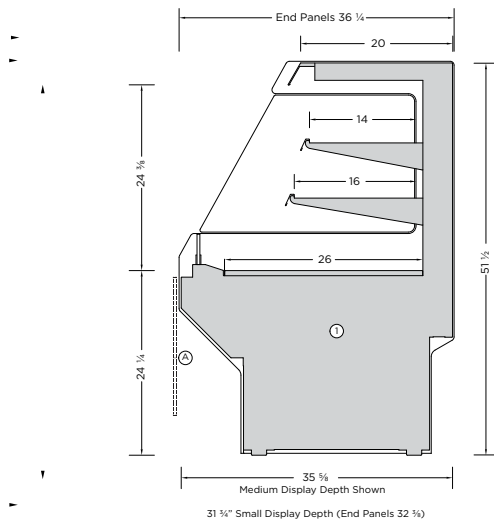
 REFRIGERATED

CREATE A DISPLAY LINE-UP OF ALMOST ANY LENGTH WITH A COMBINATION OF STANDARD DISPLAY LENGTHS

*Standard features shown*



*Custom options available, refer to options schedule on next page.*



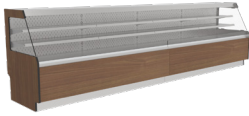
MODEL	LENGTH
BSSV-38FL-M	38 1/4"
BSSV-48FL-M	47 7/8"
BSSV-57FL-M	57 3/8"
BSSV-57FL-M	76 1/2"
BSSV-96FL-M	95 5/8"

Length does not include end panels. Add 1" per panel.

### FEATURES:

- Designed to match BFS-FL display height and depth.
- Three display depths available, refer to the dimensioned illustration. ①
- Remote or self-contained refrigeration system options.
- Many exterior finish options, powdercoat paint, brushed stainless steel, laminates, and natural wood finishes.
- Three interior finish options, textured powdercoat black, white or brushed stainless steel.
- LED light strips are mounted on the top ledge of the display area and under each shelf level.
- The LED lighting is available in various light intensities/spectrums.
- 1-14" and 1-16" adjustable metal shelves with integrated front product stop.
- Top mounted roll-down night curtain.
- Front base décor panel options ② provide a more customized look.
- Many display options offered. Refer to the options schedules on the next page.
- Engineered for serviceability and flexibility.
- Removeable base deck panels for easy cleaning and service.
- ETL electrical certification and NSF 7 standards.

Note: Information and specifications may change due to engineering improvements.



# MATCHES FLAT FRONT GLASS SERVICE DISPLAY PROFILE BSS - BAKERY SELF-SERVICE DISPLAY

 REFRIGERATED

TECHNICAL SPECS (REMOTE REFRIGERATION)						
MODEL	LENGTH	VOLTS	AMPS	PLUG	BUTH	SUCTION
BSSV-38FL-M	38 ¼"	115	1.6	NEMA 5-15P	3575	20F
BSSV-48FL-M	47 ⅞"	115	1.8	NEMA 5-15P	4340	20F
BSSV-57FL-M	57 ⅜"	115	2.5	NEMA 5-15P	5055	20F
BSSV-57FL-M	76 ½"	115	2.8	NEMA 5-15P	6630	20F
BSSV-96FL-M	95 ⅝"	115	3.3	NEMA 5-15P	8160	20F

TECHNICAL SPECS FOR SELF-CONTAINED REFRIGERATION AVAILABLE UPON REQUEST

## STANDARD FEATURES:

- Remote refrigeration.
- Medium display depth 35 ⅝".
- Three interior finish options, textured powdercoat black, white or brushed stainless steel.
- Black or white painted front exterior metal décor pan with a 4" vertical flat panel.
- LED light strips are mounted on the top ledge of the display area and under each shelf level.
- 1-14" and 1-16" adjustable metal shelves with integrated front product stop.
- Top mounted roll-down night curtain.
- Flat front glass profile.

## CUSTOM FEATURES:

EXTERIOR FINISHES	
Formica laminate finish: _____	
Other laminate finish (specify): _____	
Brushed Stainless Steel	
Oak Veneer Plywood	
Birch/Maple Veneer Plywood	
- Vertical grain direction	
- Horizontal grain direction	
- Clear Finish	
- Stain Finish	
11 ½"H extended front décor panel	
18"H extended front décor panel	
1" black McCue impact bumper strip applied to the front of the display	
Other McCue impact bumper sizes and colors available	

## END PANELS

The same interior/exterior laminate	
Brushed stainless steel interior	
Mirrored laminate interior	
Tempered glass pane	
Mirrored tempered glass pane	
1" black McCue impact bumper strip applied to the end panel	
Other McCue impact bumper sizes and colors available	

## MISCELLANEOUS

Small display depth 31 ¾"	
Large display depth 43 ¼"	
Additional metal shelf with integrated LED lighting	
Aluminum or painted price tag mould attached to the front of the shelves	
Plastic price stripping attached to the front of the shelves	
4"H x 6 ½"D 3 Tier stepped riser	
4"H x 5 ¼"D 4 Tier stepped riser	
2 ½"H x 13"D Single step riser	
4"H x 9"D Single step riser	
Clip-in angled base inlay	
Top mounted clip-on dry shelves	
Clip-on sign panels	
Self-contained refrigeration with the new R-513A (non-ozone depleting, low global warming potential) refrigerant	

## ADDITIONAL FEATURES:

- Designed to maintain the critical temperature of the products within the display at a range of 38-41°F (3-5°C) with an ambient atmosphere of 75°F (24°C)/55% humidity. Designed for holding pre-chilled product only.
- 1-year parts and labor warranty

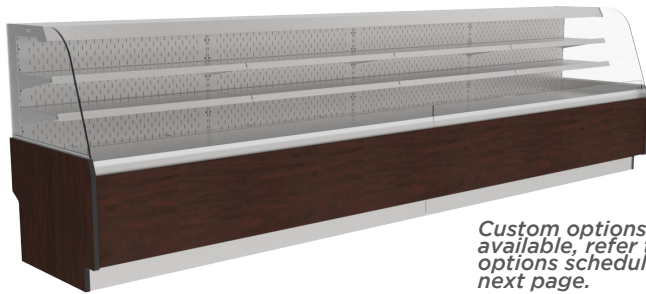
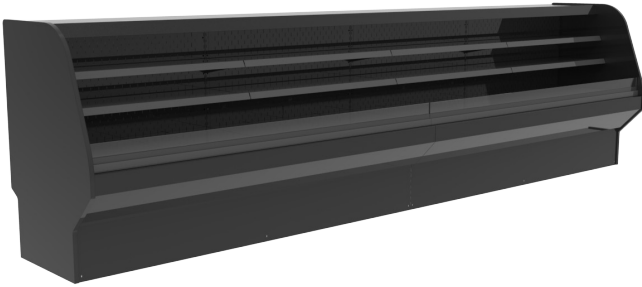
# MATCHES DOUBLE CURVE FRONT GLASS SERVICE DISPLAY PROFILE

## BSS - BAKERY SELF-SERVICE DISPLAY

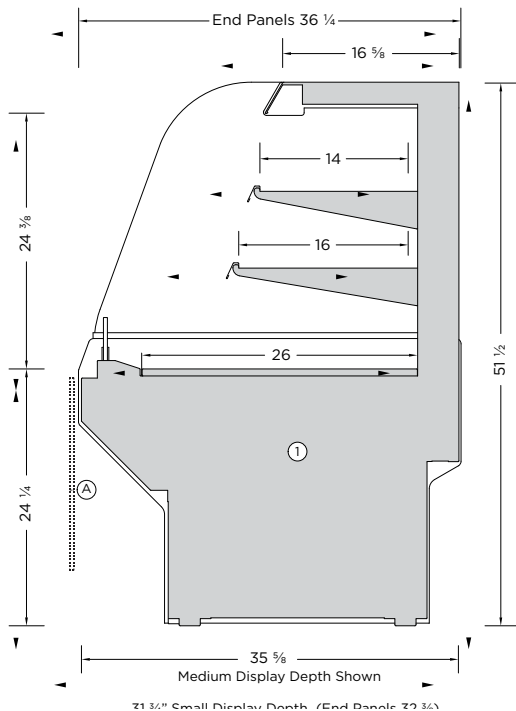
 REFRIGERATED

CREATE A DISPLAY LINE-UP OF ALMOST ANY LENGTH WITH A COMBINATION OF STANDARD DISPLAY LENGTHS

*Standard features shown*



*Custom options available, refer to options schedule on next page.*



MODEL	LENGTH
BSSV-38DC-M	38 1/4"
BSSV-48DC-M	47 7/8"
BSSV-57DC-M	57 3/8"
BSSV-76DC-M	76 1/2"
BSSV-96DC-M	95 5/8"

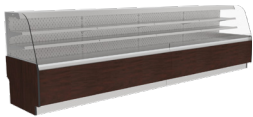
Length does not include end panels. Add 1" per panel.

### FEATURES:

- Designed to match BFS-DC display height and depth.
- Three display depths available, refer to the dimensioned illustration. ①
- Remote or self-contained refrigeration system options.
- Many exterior finish options, powdercoat paint, brushed stainless steel, laminates, and natural wood finishes.
- Three interior finish options, textured powdercoat black, white or brushed stainless steel.
- LED light strips are mounted on the top ledge of the display area and under each shelf level.
- The LED lighting is available in various light intensities/spectrums.
- 1-14" and 1-16" adjustable metal shelves with integrated front product stop.
- Top mounted roll-down night curtain.
- Front base décor panel options A provide a more customized look.
- Many display options offered. Refer to the options schedules on the next page.
- Engineered for serviceability and flexibility.
- Removeable base deck panels for easy cleaning and service.
- ETL electrical certification and NSF 7 standards.

Note: Information and specifications may change due to engineering improvements.





# MATCHES DOUBLE CURVE FRONT GLASS SERVICE DISPLAY PROFILE BSS - BAKERY SELF-SERVICE DISPLAY

 REFRIGERATED

TECHNICAL SPECS (REMOTE REFRIGERATION)						
MODEL	LENGTH	VOLTS	AMPS	PLUG	BUTH	SUCTION
BSSV-38DC-M	38 ¼"	115	1.6	NEMA 5-15P	3575	20F
BSSV-48DC-M	47 ⅞"	115	1.8	NEMA 5-15P	4340	20F
BSSV-57DC-M	57 ⅜"	115	2.5	NEMA 5-15P	5055	20F
BSSV-76DC-M	76 ½"	115	2.8	NEMA 5-15P	6630	20F
BSSV-96DC-M	95 ⅝"	115	3.3	NEMA 5-15P	8160	20F

TECHNICAL SPECS FOR SELF-CONTAINED REFRIGERATION AVAILABLE UPON REQUEST

## STANDARD FEATURES:

- Remote refrigeration.
- Medium display depth 35 ⅝".
- Three interior finish options, textured powdercoat black, white or brushed stainless steel.
- Black or white painted front exterior metal décor pan with a 4" vertical flat panel.
- LED light strips are mounted on the top ledge of the display area and under each shelf level.
- 1-14" and 1-16" adjustable metal shelves with integrated front product stop.
- Top mounted roll-down night curtain.
- Double Curve glass profile.

## CUSTOM FEATURES:

EXTERIOR FINISHES	
Formica laminate finish: _____	
Other laminate finish (specify): _____	
Brushed Stainless Steel	
Oak Veneer Plywood	
Birch/Maple Veneer Plywood	
- Vertical grain direction	
- Horizontal grain direction	
- Clear Finish	
- Stain Finish	
11 ½"H extended front décor panel	
18"H extended front décor panel	
1" black McCue impact bumper strip applied to the front of the display	
Other McCue impact bumper sizes and colors available	

## END PANELS

The same interior/exterior laminate	
Brushed stainless steel interior	
Mirrored laminate interior	
Tempered glass pane	
Mirrored tempered glass pane	
1" black McCue impact bumper strip applied to the end panel	
Other McCue impact bumper sizes and colors available	

## MISCELLANEOUS

Small display depth 31 ¾"	
Large display depth 43 ¼"	
Additional metal shelf with integrated LED lighting	
Aluminum or painted price tag mould attached to the front of the shelves	
Plastic price stripping attached to the front of the shelves	
4"H x 6 ½"D 3 Tier stepped riser	
4"H x 5 ¼"D 4 Tier stepped riser	
2 ½"H x 13"D Single step riser	
4"H x 9"D Single step riser	
Clip-in angled base inlay	
Top mounted clip-on dry shelves	
Clip-on sign panels	
Self-contained refrigeration with the new R-513A (non-ozone depleting, low global warming potential) refrigerant	

## ADDITIONAL FEATURES:

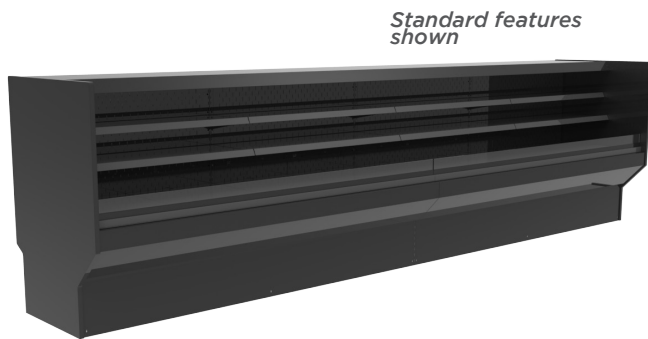
- Designed to maintain the critical temperature of the products within the display at a range of 38-41°F (3-5°C) with an ambient atmosphere of 75°F (24°C)/55% humidity. Designed for holding pre-chilled product only.
- 1-year parts and labor warranty

# MATCHES SQUARE FRONT GLASS SERVICE DISPLAY PROFILE

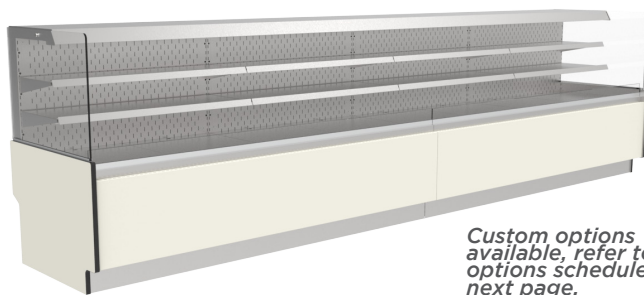
## BSS - BAKERY SELF-SERVICE DISPLAY

 REFRIGERATED

CREATE A DISPLAY LINE-UP OF ALMOST ANY LENGTH WITH A COMBINATION OF STANDARD DISPLAY LENGTHS



*Standard features shown*



*Custom options available, refer to options schedule on next page.*

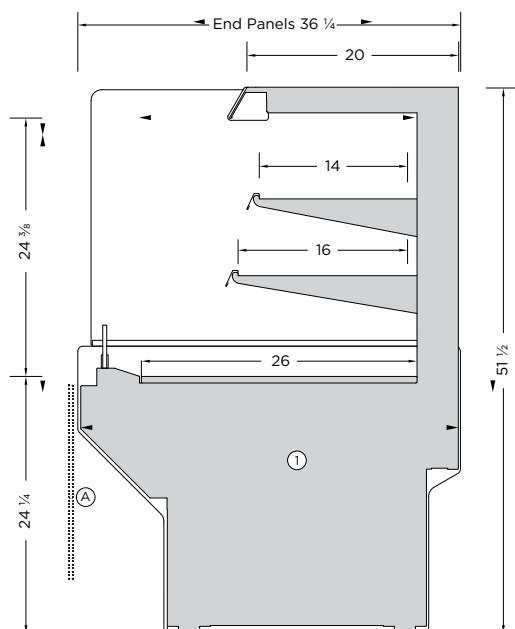
MODEL	LENGTH
BSSV-38SQ-M	38 1/4"
BSSV-48SQ-M	47 7/8"
BSSV-57SQ-M	57 3/8"
BSSV-76SQ-M	76 1/2"
BSSV-96SQ-M	95 5/8"

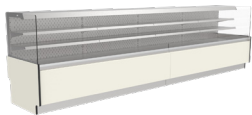
Length does not include end panels. Add 1" per panel.

### FEATURES:

- Designed to match BFS-SQ display height and depth.
- Two display depths available, refer to the dimensioned illustration. ①
- Remote or self-contained refrigeration system options.
- Many exterior finish options, powdercoat paint, brushed stainless steel, laminates, and natural wood finishes.
- Three interior finish options, textured powdercoat black, white or brushed stainless steel.
- LED light strips are mounted on the top ledge of the display area and under each shelf level.
- The LED lighting is available in various light intensities/spectrums.
- 1-14" and 1-16" adjustable metal shelves with integrated front product stop.
- Top mounted roll-down night curtain.
- Front base décor panel options (A) provide a more customized look.
- Many display options offered. Refer to the options schedules on the next page.
- Engineered for serviceability and flexibility.
- Removeable base deck panels for easy cleaning and service.
- ETL electrical certification and NSF 7 standards.

Note: Information and specifications may change due to engineering improvements.





# MATCHES SQUARE FRONT GLASS SERVICE DISPLAY PROFILE

## BSS - BAKERY SELF-SERVICE DISPLAY

 REFRIGERATED

### TECHNICAL SPECS (REMOTE REFRIGERATION)

MODEL	LENGTH	VOLTS	AMPS	PLUG	BUTH	SUCTION
BSSV-38SQ-M	38 ¼"	115	1.6	NEMA 5-15P	3575	20F
BSSV-48SQ-M	47 ⅞"	115	1.8	NEMA 5-15P	4340	20F
BSSV-57SQ-M	57 ⅜"	115	2.5	NEMA 5-15P	5055	20F
BSSV-76SQ-M	76 ½"	115	2.8	NEMA 5-15P	6630	20F
BSSV-96SQ-M	95 ⅝"	115	3.3	NEMA 5-15P	8160	20F

TECHNICAL SPECS FOR SELF-CONTAINED REFRIGERATION AVAILABLE UPON REQUEST

### STANDARD FEATURES:

- Remote refrigeration.
- Medium display depth 35 ⅝".
- Three interior finish options, textured powdercoat black, white or brushed stainless steel.
- Black or white painted front exterior metal décor pan with a 4" vertical flat panel.
- LED light strips are mounted on the top ledge of the display area and under each shelf level.
- 1-14" and 1-16" adjustable metal shelves with integrated front product stop.
- Top mounted roll-down night curtain.
- Square glass profile.

### CUSTOM FEATURES:

#### EXTERIOR FINISHES

Formica laminate finish: _____	
Other laminate finish (specify): _____	
Brushed Stainless Steel	
Oak Veneer Plywood	
Birch/Maple Veneer Plywood	
- Vertical grain direction	
- Horizontal grain direction	
- Clear Finish	
- Stain Finish	
11 ½"H extended front décor panel	
18"H extended front décor panel	
1" black McCue impact bumper strip applied to the front of the display	
Other McCue impact bumper sizes and colors available	

#### END PANELS

The same interior/exterior laminate	
Brushed stainless steel interior	
Mirrored laminate interior	
Tempered glass pane	
Mirrored tempered glass pane	
1" black McCue impact bumper strip applied to the end panel	
Other McCue impact bumper sizes and colors available	

#### MISCELLANEOUS

Small display depth 31 ¾"	
Additional metal shelf with integrated LED lighting	
Aluminum or painted price tag mould attached to the front of the shelves	
Plastic price stripping attached to the front of the shelves	
4"H x 6 ½"D 3 Tier stepped riser	
4"H x 5 ¼"D 4 Tier stepped riser	
2 ½"H x 13"D Single step riser	
4"H x 9"D Single step riser	
Clip-in angled base inlay	
Top mounted clip-on dry shelves	
Clip-on sign panels	
Self-contained refrigeration with the new R-513A (non-ozone depleting, low global warming potential) refrigerant	

### ADDITIONAL FEATURES:

- Designed to maintain the critical temperature of the products within the display at a range of 38-41°F (3-5°C) with an ambient atmosphere of 75°F (24°C)/55% humidity. Designed for holding pre-chilled product only.
- 1-year parts and labor warranty

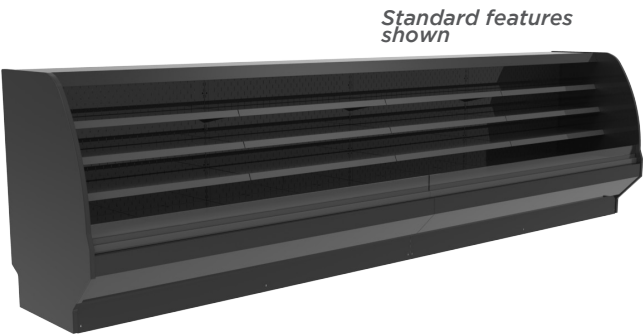


# MATCHES HIGH-CAPACITY DOUBLE CURVE FRONT GLASS MEDIUM DEPTH SERVICE DISPLAY PROFILE

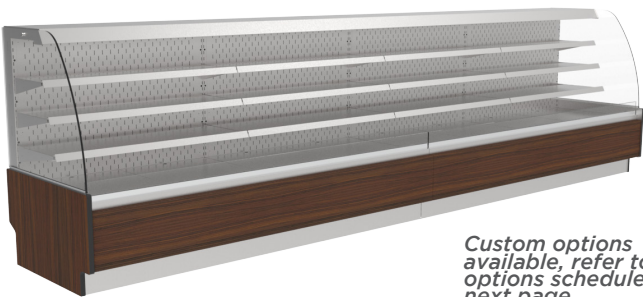
## BSS - BAKERY SELF-SERVICE DISPLAY

 REFRIGERATED

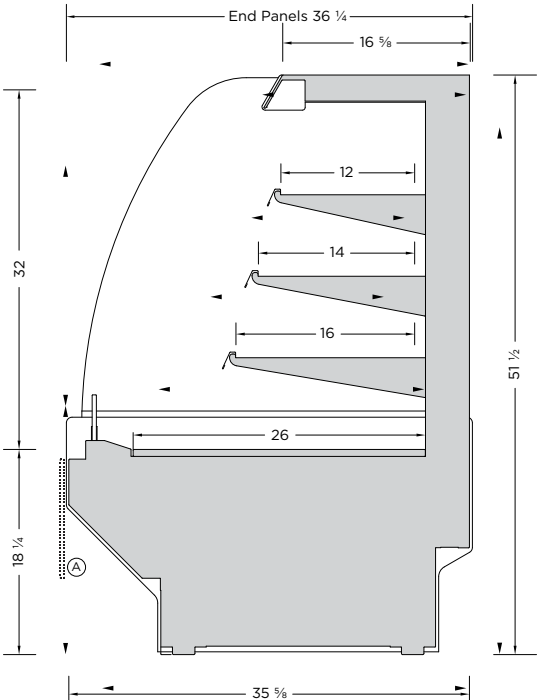
CREATE A DISPLAY LINE-UP OF ALMOST ANY LENGTH WITH A COMBINATION OF STANDARD DISPLAY LENGTHS



Standard features shown



Custom options available, refer to options schedule on next page.



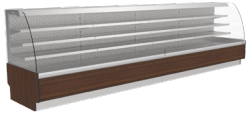
MODEL	LENGTH
BSSH-38DC-M	38 1/4"
BSSH-48DC-M	47 7/8"
BSSH-57DC-M	57 3/8"
BSSH-76DC-M	76 1/2"
BSSH-96DC-M	95 5/8"

Length does not include end panels. Add 1" per panel.

### FEATURES:

- Designed to match BSSH-DC display height and depth.
- Remote refrigeration option only for this display profile
- Many exterior finish options, powdercoat paint, brushed stainless steel, laminates, and natural wood finishes.
- Three interior finish options, textured powdercoat black, white or brushed stainless steel.
- LED light strips are mounted on the top ledge of the display area and under each shelf level.
- The LED lighting is available in various light intensities/spectrums.
- 1-12", 1-14" and 1-16" adjustable metal shelves with integrated front product stop.
- Top mounted roll-down night curtain.
- Front base décor panel options (A) provide a more customized look.
- Many display options offered. Refer to the options schedules on the next page.
- Engineered for serviceability and flexibility.
- Removeable base deck panels for easy cleaning and service.
- ETL electrical certification and NSF 7 standards.

Note: Information and specifications may change due to engineering improvements.



# MATCHES HIGH- CAPACITY DOUBLE CURVE FRONT GLASS MEDIUM DEPTH SERVICE DISPLAY PROFILE

## BSS - BAKERY SELF-SERVICE DISPLAY

REFRIGERATED

### TECHNICAL SPECS (REMOTE REFRIGERATION)

MODEL	LENGTH	VOLTS	AMPS	PLUG	BUTH	SUCTION
BSSH-38DC-M	38 ¼"	115	1.6	NEMA 5-15P	3575	20F
BSSH-48DC-M	47 ⅞"	115	1.8	NEMA 5-15P	4340	20F
BSSH-57DC-M	57 ⅞"	115	2.5	NEMA 5-15P	5055	20F
BSSH-76DC-M	76 ½"	115	2.8	NEMA 5-15P	6630	20F
BSSH-96DC-M	95 ⅝"	115	3.3	NEMA 5-15P	8160	20F

### STANDARD FEATURES:

- Remote refrigeration.
- Medium display depth 35 ⅝".
- Three interior finish options, textured powdercoat black, white or brushed stainless steel.
- Black or white painted front exterior metal décor pan with a 4" vertical flat panel.
- LED light strips are mounted on the top ledge of the display area and under each shelf level.
- 1-12", 1-14" and 1-16" adjustable metal shelves with integrated front product stop.
- Top mounted roll-down night curtain.
- Double Curve glass profile.

### CUSTOM FEATURES:

#### EXTERIOR FINISHES

Formica laminate finish: _____	
Other laminate finish (specify): _____	
Brushed Stainless Steel	
Oak Veneer Plywood	
Birch/Maple Veneer Plywood	
- Vertical grain direction	
- Horizontal grain direction	
- Clear Finish	
- Stain Finish	
11 ½"H extended front décor panel	
1" black McCue impact bumper strip applied to the front of the display	
Other McCue impact bumper sizes and colors available	

#### END PANELS

The same interior/exterior laminate	
Brushed stainless steel interior	
Mirrored laminate interior	
Tempered glass pane	
Mirrored tempered glass pane	
1" black McCue impact bumper strip applied to the end panel	
Other McCue impact bumper sizes and colors available	

#### MISCELLANEOUS

Additional metal shelf with integrated LED lighting	
Aluminum or painted price tag mould attached to the front of the shelves	
Plastic price stripping attached to the front of the shelves	
4"H x 6 ½"D 3 Tier stepped riser	
4"H x 5 ¼"D 4 Tier stepped riser	
2 ½"H x 13"D Single step riser	
4"H x 9"D Single step riser	
Clip-in angled base inlay	
Top mounted clip-on dry shelves	
Clip-on sign panels	

### ADDITIONAL FEATURES:

- Designed to maintain the critical temperature of the products within the display at a range of 38-41°F (3-5°C) with an ambient atmosphere of 75°F (24°C)/55% humidity. Designed for holding pre-chilled product only.
- 1-year parts and labor warranty

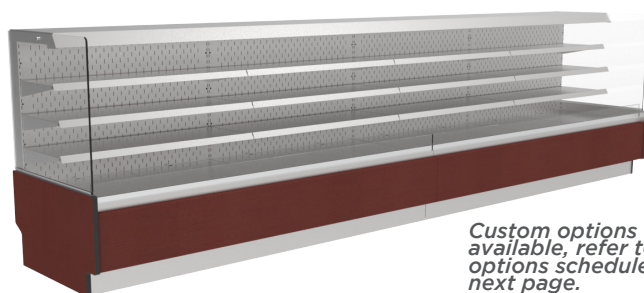
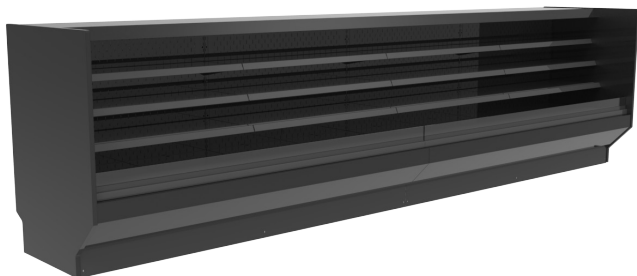
# MATCHES HIGH-CAPACITY SQUARE FRONT GLASS MEDIUM DEPTH SERVICE DISPLAY PROFILE

## BSS - BAKERY SELF-SERVICE DISPLAY

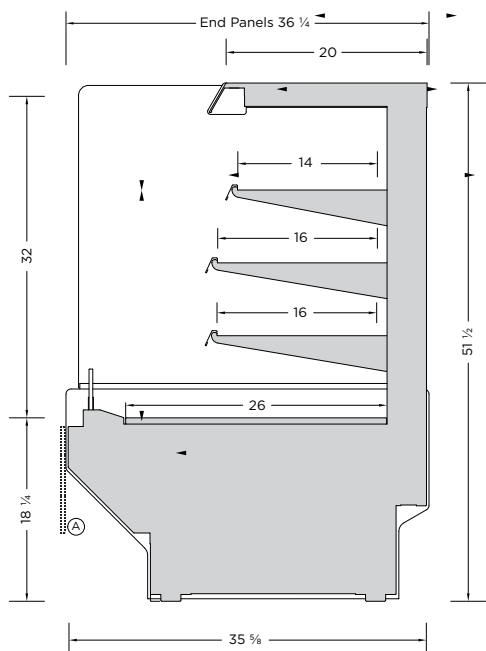
 REFRIGERATED

CREATE A DISPLAY LINE-UP OF ALMOST ANY LENGTH WITH A COMBINATION OF STANDARD DISPLAY LENGTHS

*Standard features shown*



*Custom options available, refer to options schedule on next page.*



MODEL	LENGTH
BSSH-38SQ-M	38 1/4"
BSSH-48SQ-M	47 7/8"
BSSH-57SQ-M	57 3/8"
BSSH-76SQ-M	76 1/2"
BSSH-96SQ-M	95 5/8"

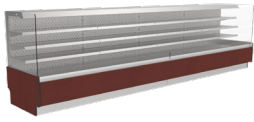
Length does not include end panels. Add 1" per panel.

### FEATURES:

- Designed to match BSSH-SQ display height and depth.
- Remote refrigeration option only for this display profile
- Many exterior finish options, powdercoat paint, brushed stainless steel, laminates, and natural wood finishes.
- Three interior finish options, textured powdercoat black, white or brushed stainless steel.
- LED light strips are mounted on the top ledge of the display area and under each shelf level.
- The LED lighting is available in various light intensities/spectrums.
- 1-14" and 2-16" adjustable metal shelves with integrated front product stop.
- Top mounted roll-down night curtain.
- Front base décor panel options <sup>A</sup> provide a more customized look.
- Many display options offered. Refer to the options schedules on the next page.
- Engineered for serviceability and flexibility.
- Removeable base deck panels for easy cleaning and service.
- ETL electrical certification and NSF 7 standards.

Note: Information and specifications may change due to engineering improvements.





# MATCHES HIGH-CAPACITY SQUARE FRONT GLASS MEDIUM DEPTH SERVICE DISPLAY PROFILE

## BSS - BAKERY SELF-SERVICE DISPLAY

REFRIGERATED

### TECHNICAL SPECS (REMOTE REFRIGERATION)

MODEL	LENGTH	VOLTS	AMPS	PLUG	BUTH	SUCTION
BSSH-38SQ-M	38 ¼"	115	1.6	NEMA 5-15P	3575	20F
BSSH-48SQ-M	47 ⅞"	115	1.8	NEMA 5-15P	4340	20F
BSSH-57SQ-M	57 ⅞"	115	2.5	NEMA 5-15P	5055	20F
BSSH-76SQ-M	76 ½"	115	2.8	NEMA 5-15P	6630	20F
BSSH-96SQ-M	95 ⅝"	115	3.3	NEMA 5-15P	8160	20F

### STANDARD FEATURES:

- Remote refrigeration.
- Medium display depth 35 ⅝".
- Three interior finish options, textured powdercoat black, white or brushed stainless steel.
- Black or white painted front exterior metal décor pan with a 4" vertical flat panel.
- LED light strips are mounted on the top ledge of the display area and under each shelf level.
- 1-14" and 2-16" adjustable metal shelves with integrated front product stop.
- Top mounted roll-down night curtain.
- Square glass profile.

### CUSTOM FEATURES:

#### EXTERIOR FINISHES

Formica laminate finish: _____	
Other laminate finish (specify): _____	
Brushed Stainless Steel	
Oak Veneer Plywood	
Birch/Maple Veneer Plywood	
- Vertical grain direction	
- Horizontal grain direction	
- Clear Finish	
- Stain Finish	
11 ½"H extended front décor panel	
1" black McCue impact bumper strip applied to the front of the display	
Other McCue impact bumper sizes and colors available	

#### END PANELS

The same interior/exterior laminate	
Brushed stainless steel interior	
Mirrored laminate interior	
Tempered glass pane	
Mirrored tempered glass pane	
1" black McCue impact bumper strip applied to the end panel	
Other McCue impact bumper sizes and colors available	

#### MISCELLANEOUS

Additional metal shelf with integrated LED lighting	
Aluminum or painted price tag mould attached to the front of the shelves	
Plastic price stripping attached to the front of the shelves	
4"H x 6 ½"D 3 Tier stepped riser	
4"H x 5 ¼"D 4 Tier stepped riser	
2 ½"H x 13"D Single step riser	
4"H x 9"D Single step riser	
Clip-in angled base inlay	
Top mounted clip-on dry shelves	
Clip-on sign panels	

### ADDITIONAL FEATURES:

- Designed to maintain the critical temperature of the products within the display at a range of 38-41°F (3-5°C) with an ambient atmosphere of 75°F (24°C)/55% humidity. Designed for holding pre-chilled product only.
- 1- year parts and labor warranty

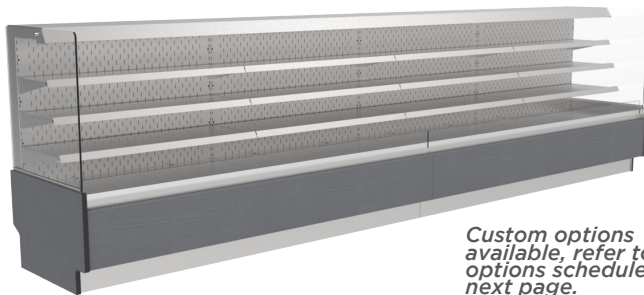
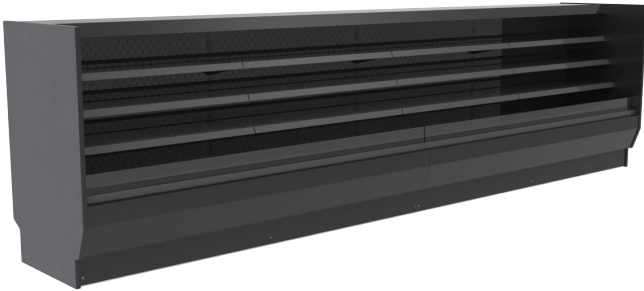
# MATCHES HIGH CAPACITY SQUARE FRONT GLASS SMALL DEPTH SERVICE DISPLAY PROFILE

## BSS - BAKERY SELF-SERVICE DISPLAY

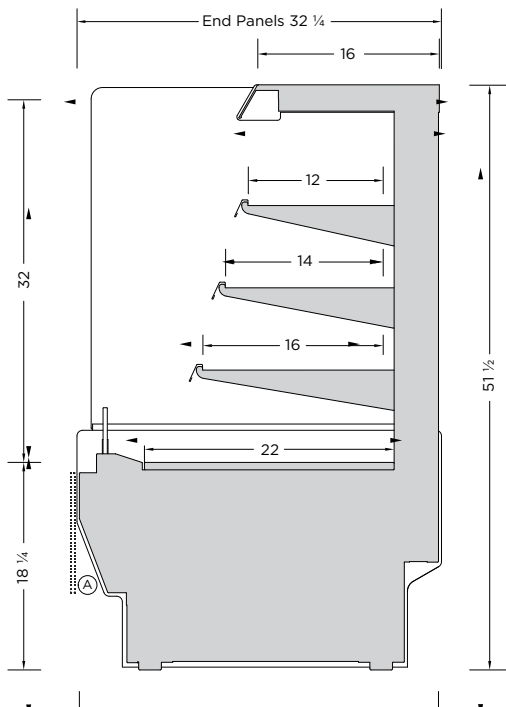
 REFRIGERATED

CREATE A DISPLAY LINE-UP OF ALMOST ANY LENGTH WITH A COMBINATION OF STANDARD DISPLAY LENGTHS

*Standard features  
shown*



*Custom options  
available, refer to  
options schedule on  
next page.*



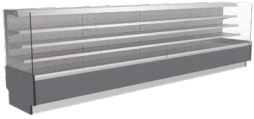
MODEL	LENGTH
BSSH-38SQ-S	38 1/4"
BSSH-48SQ-S	47 7/8"
BSSH-57SQ-S	57 3/8"
BSSH-76SQ-S	76 1/2"
BSSH-96SQ-S	95 5/8"

Length does not include end panels. Add 1" per panel.

### FEATURES:

- Designed to match BSSH-SQ display height and depth.
- Remote refrigeration option only for this display profile
- Many exterior finish options, powdercoat paint, brushed stainless steel, laminates, and natural wood finishes.
- Three interior finish options, textured powdercoat black, white or brushed stainless steel.
- LED light strips are mounted on the top ledge of the display area and under each shelf level.
- The LED lighting is available in various light intensities/spectrums.
- 1-12", 1-14" and 1-16" adjustable metal shelves with integrated front product stop.
- Top mounted roll-down night curtain.
- Front base décor panel options (A) provide a more customized look.
- Many display options offered. Refer to the options schedules on the next page.
- Engineered for serviceability and flexibility.
- Removeable base deck panels for easy cleaning and service.
- ETL electrical certification and NSF 7 standards.

Note: Information and specifications may change due to engineering improvements.



# MATCHES HIGH-CAPACITY SQUARE FRONT GLASS SMALL DEPTH SERVICE DISPLAY PROFILE

## BSS - BAKERY SELF-SERVICE DISPLAY

REFRIGERATED

### TECHNICAL SPECS (REMOTE REFRIGERATION)

MODEL	LENGTH	VOLTS	AMPS	PLUG	BUTH	SUCTION
BSSH-38SQ-S	38 ¼"	115	1.6	NEMA 5-15P	3575	20F
BSSH-48SQ-S	47 ⅞"	115	1.8	NEMA 5-15P	4340	20F
BSSH-57SQ-S	57 ⅞"	115	2.5	NEMA 5-15P	5055	20F
BSSH-76SQ-S	76 ½"	115	2.8	NEMA 5-15P	6630	20F
BSSH-96SQ-S	95 ⅝"	115	3.3	NEMA 5-15P	8160	20F

### STANDARD FEATURES:

- Remote refrigeration.
- Small display depth 31 ⅝".
- Three interior finish options, textured powdercoat black, white or brushed stainless steel.
- Black or white painted front exterior metal décor pan with a 4" vertical flat panel.
- LED light strips are mounted on the top ledge of the display area and under each shelf level.
- 1-12", 1-14" and 1-16" adjustable metal shelves with integrated front product stop.
- Top mounted roll-down night curtain.
- Square glass profile.

### CUSTOM FEATURES:

#### EXTERIOR FINISHES

Formica laminate finish: _____	
Other laminate finish (specify): _____	
Brushed Stainless Steel	
Oak Veneer Plywood	
Birch/Maple Veneer Plywood	
- Vertical grain direction	
- Horizontal grain direction	
- Clear Finish	
- Stain Finish	
11 ½"H extended front décor panel	
1" black McCue impact bumper strip applied to the front of the display	
Other McCue impact bumper sizes and colors available	

#### END PANELS

The same interior/exterior laminate	
Brushed stainless steel interior	
Mirrored laminate interior	
Tempered glass pane	
Mirrored tempered glass pane	
1" black McCue impact bumper strip applied to the end panel	
Other McCue impact bumper sizes and colors available	

#### MISCELLANEOUS

Small display depth 31 ¾"	
Additional metal shelf with integrated LED lighting	
Aluminum or painted price tag mould attached to the front of the shelves	
Plastic price stripping attached to the front of the shelves	
4"H x 6 ½"D 3 Tier stepped riser	
4"H x 5 ¼"D 4 Tier stepped riser	
2 ½"H x 13"D Single step riser	
4"H x 9"D Single step riser	
Clip-in angled base inlay	
Top mounted clip-on dry shelves	
Clip-on sign panels	

### ADDITIONAL FEATURES:

- Designed to maintain the critical temperature of the products within the display at a range of 38-41°F (3-5°C) with an ambient atmosphere of 75°F (24°C)/55% humidity. Designed for holding pre-chilled product only.
- 1-year parts and labor warranty



# BSD - BAKERY SINGLE LEVEL SELF-SERVICE DISPLAY

24” Front Height with a 36” Rear Height



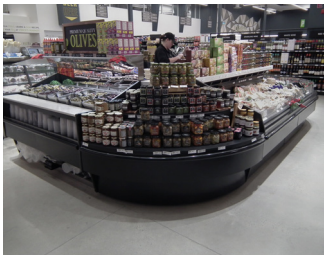
Page 48



24” Front Height with a 42” or 48” Rear Height



Page 50



18” Front Height with a 30” Rear Height



Page 52



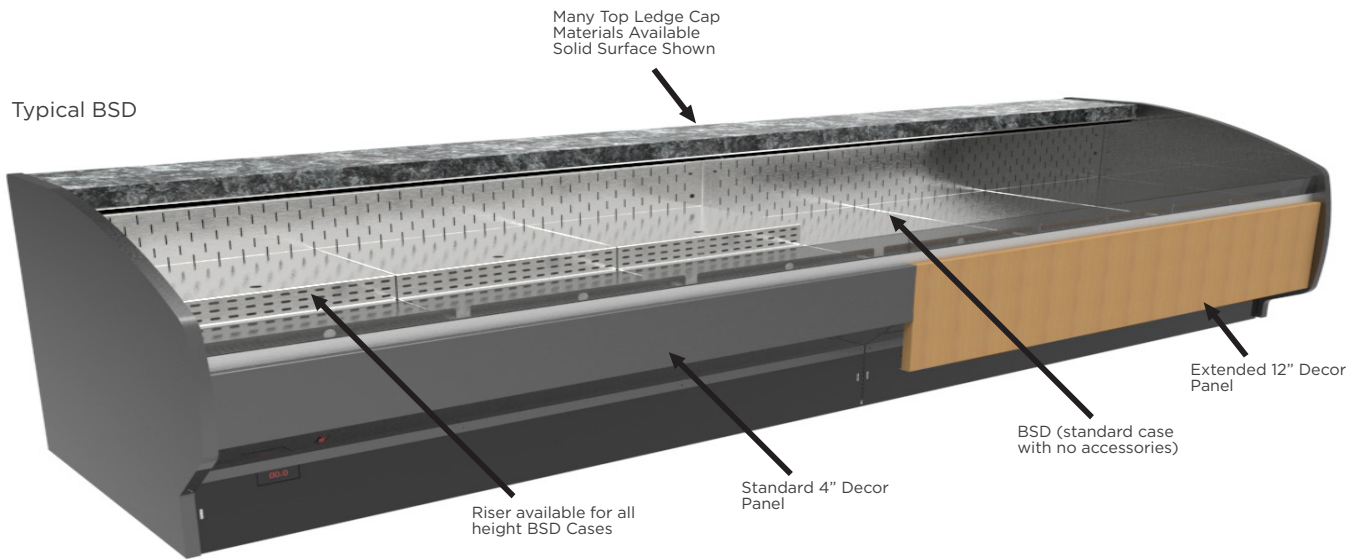
18” Front Height with a 36” or 42” Rear Height



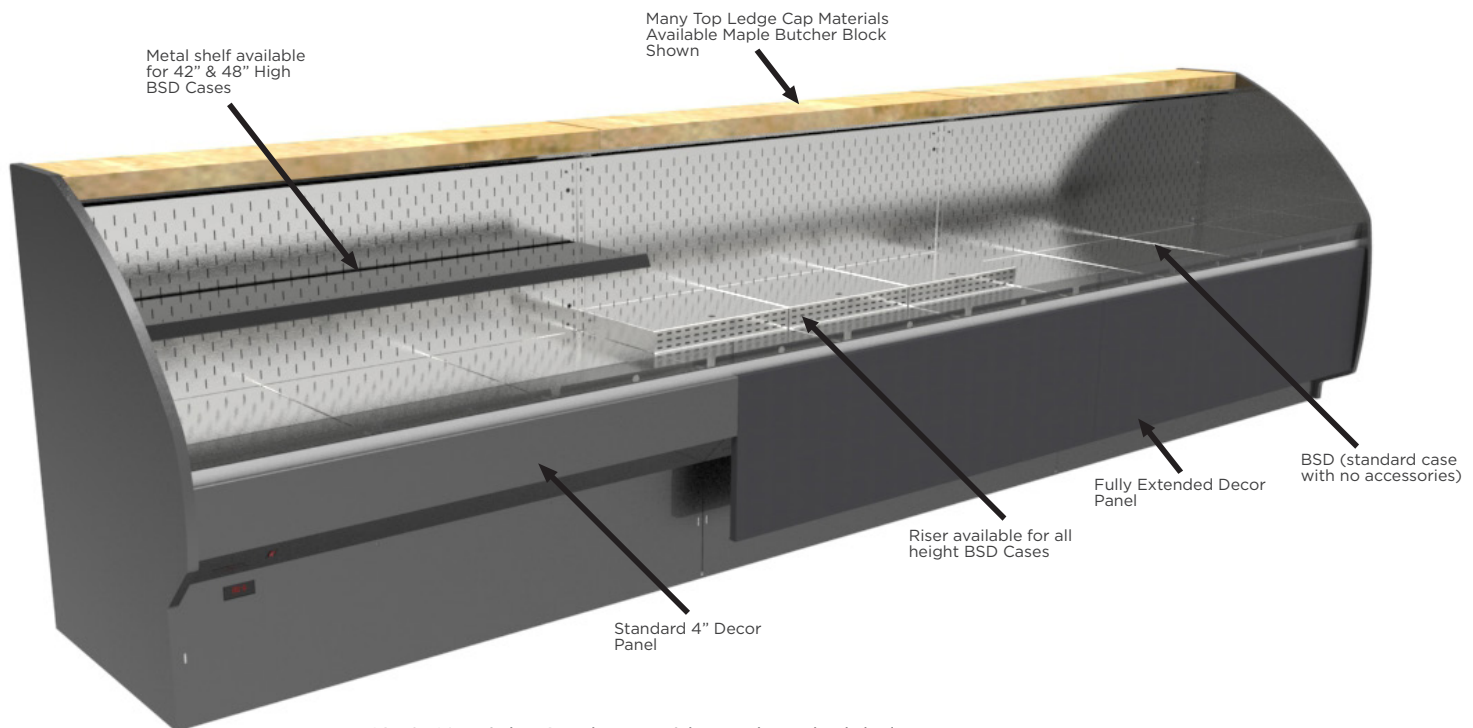
Page 54



# BSD - FEATURES TO MAKE YOUR SHOWCASE WHAT YOU NEED IT TO BE



30\" & 36\" High BSD shown with Solid Surface ledge



42\" & 48\" High BSD shown with Butcher Block ledge

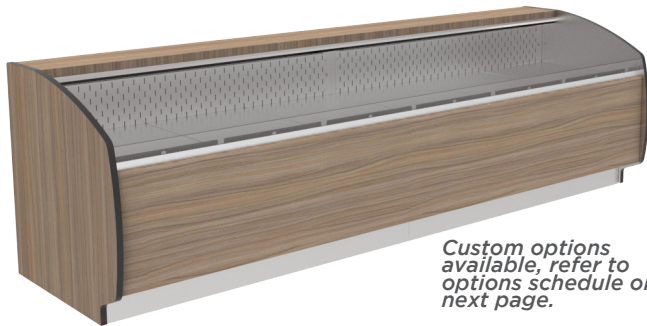
# 24" FRONT HEIGHT WITH A 36" REAR HEIGHT

## BSD - BAKERY SINGLE LEVEL SELF-SERVICE DISPLAY

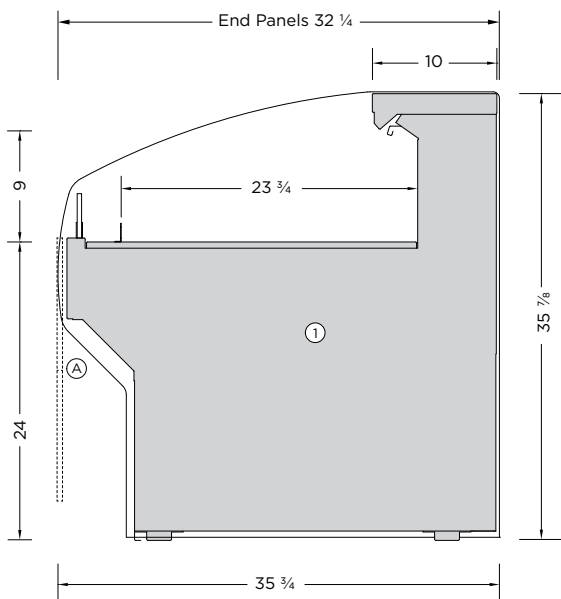
 REFRIGERATED

CREATE A DISPLAY LINE-UP OF ALMOST ANY LENGTH WITH A COMBINATION OF STANDARD DISPLAY LENGTHS

*Standard features shown*



*Custom options available, refer to options schedule on next page.*



Medium Case Depth Shown

MODEL	LENGTH
BSDN-3636-M	36 1/4"
BSDN-4836-M	48 1/4"
BSDN-6036-M	60 3/8"
BSDN-7236-M	72 1/2"
BSDN-9636-M	96 1/2"

Length does not include end panels. Add 1" per panel.

### FEATURES:

- Three display depths available, refer to the dimensioned illustration. ①
- Remote or self-contained refrigeration system options.
- Many exterior finish options, powdercoat paint, brushed stainless steel, laminates, and natural wood finishes.
- Three interior finish options, textured powdercoat black, white or brushed stainless steel.
- LED light strips are mounted on the top ledge of the display.
- The LED lighting is available in various light intensities/spectrums.
- 1 1/2" front product stop integrated to the base inlays.
- Front base décor panel options (A) provide a more customized look.
- Many display options offered. Refer to the options schedules on the next page.
- Engineered for serviceability and flexibility.
- Removeable base deck panels for easy cleaning and service.
- ETL electrical certification and NSF 7 standards.

Note: Information and specifications may change due to engineering improvements.





# 24" FRONT HEIGHT WITH A 36" REAR HEIGHT

## BSD - BAKERY SINGLE LEVEL SELF-SERVICE DISPLAY

REFRIGERATED

TECHNICAL SPECS (REMOTE REFRIGERATION)						
MODEL	LENGTH	VOLTS	AMPS	PLUG	BUTH	SUCTION
BSDN-3636-M	36 ¼"	115	0.7	NEMA 5-15P	2719	20F
BSDN-4836-M	48 ¼"	115	0.9	NEMA 5-15P	3619	20F
BSDN-6036-M	60 ¾"	115	0.9	NEMA 5-15P	4528	20F
BSDN-7236-M	72 ½"	115	0.9	NEMA 5-15P	5438	20F
BSDN-9636-M	96 ½"	115	1.1	NEMA 5-15P	7238	20F

TECHNICAL SPECS FOR SELF-CONTAINED REFRIGERATION AVAILABLE UPON REQUEST

### STANDARD FEATURES:

- Remote refrigeration.
- Medium display depth 35 ⅝".
- Three interior finish options, textured powdercoat black, white or brushed stainless steel.
- Black or white painted front exterior metal décor pan with a 4" vertical flat panel.
- LED light strips are mounted on the top ledge of the display area.

### CUSTOM FEATURES:

EXTERIOR FINISHES	
Formica laminate finish: _____	
Other laminate finish (specify): _____	
Brushed Stainless Steel	
Oak Veneer Plywood	
Birch/Maple Veneer Plywood	
- Vertical grain direction	
- Horizontal grain direction	
- Clear Finish	
- Stain Finish	
11 ½"H extended front décor panel	
18"H extended front décor panel	
1" black McCue impact bumper strip applied to the front of the display	
Other McCue impact bumper sizes and colors available	

### END PANELS

The same interior/exterior laminate	
Brushed stainless steel interior	
Mirrored laminate interior	
Tempered glass pane	
Mirrored tempered glass pane	
1" black McCue impact bumper strip applied to the end panel	
Other McCue impact bumper sizes and colors available	

### MISCELLANEOUS

Small display depth 31 ¾"	
Large display depth 43 ¼"	
Top mounted roll-down thermal night curtain	
2 ½"H x 13"D Single step riser	
4"H x 9"D Single step riser	
Clip-in angled base inlay	
Top mounted clip-on dry shelves	
Clip-on sign panels	
Self-contained refrigeration with the new R-513A (non-ozone depleting, low global warming potential) refrigerant	

### ADDITIONAL FEATURES:

- Designed to maintain the critical temperature of the products within the display at a range of 38-41°F (3-5°C) with an ambient atmosphere of 75°F (24°C)/55% humidity. Designed for holding pre-chilled product only.
- 1-year parts and labor warranty.

# 24" FRONT HEIGHT WITH A 42" & 48" REAR HEIGHT

## BSD - BAKERY SINGLE LEVEL SELF-SERVICE DISPLAY

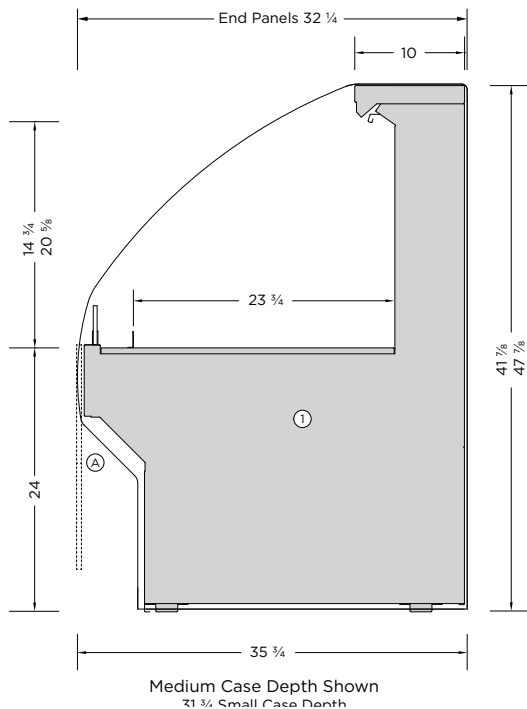
 REFRIGERATED

CREATE A DISPLAY LINE-UP OF ALMOST ANY LENGTH WITH A COMBINATION OF STANDARD DISPLAY LENGTHS

*Standard features shown*



*Custom options available, refer to options schedule on next page.*



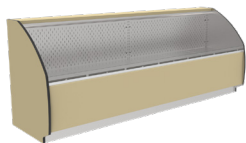
MODEL	LENGTH
BSDN-3642-M	36 1/4"
BSDN-4842-M	48 1/4"
BSDN-6042-M	60 3/8"
BSDN-7242-M	72 1/2"
BSDN-9642-M	96 1/2"
BSDN-3648-M	36 1/4"
BSDN-4848-M	48 1/4"
BSDN-6048-M	60 3/8"
BSDN-7248-M	72 1/2"
BSDN-9248-M	96 1/2"

Length does not include end panels. Add 1" per panel.

### FEATURES:

- Three display depths available, refer to the dimensioned illustration. ①
- Remote or self-contained refrigeration system options.
- Many exterior finish options, powdercoat paint, brushed stainless steel, laminates, and natural wood finishes.
- Three interior finish options, textured powdercoat black, white or brushed stainless steel.
- LED light strips are mounted on the top ledge of the display.
- The LED lighting is available in various light intensities/spectrums.
- 1 1/2" front product stop integrated to the base inlays.
- Front base décor panel options Ⓐ provide a more customized look.
- Many display options offered. Refer to the options schedules on the next page.
- Engineered for serviceability and flexibility.
- Removeable base deck panels for easy cleaning and service.
- ETL electrical certification and NSF 7 standards.

Note: Information and specifications may change due to engineering improvements.



# 24" FRONT HEIGHT WITH A 42" & 48" REAR HEIGHT

## BSD - BAKERY SINGLE LEVEL SELF-SERVICE DISPLAY

REFRIGERATED

TECHNICAL SPECS (REMOTE REFRIGERATION)						
MODEL	LENGTH	VOLTS	AMPS	PLUG	BUTH	SUCTION
BSDN-3642-M	36 ¼"	115	1.2	NEMA 5-15P	2794	20F
BSDN-3648-M					2870	
BSDN-4842-M	48 ¼"	115	1.4	NEMA 5-15P	3719	20F
BSDN-4848-M					3820	
BSDN-6042-M	60 ¾"	115	1.4	NEMA 5-15P	4654	20F
BSDN-6048-M					4780	
BSDN-7242-M	72 ½"	115	1.4	NEMA 5-15P	5589	20F
BSDN-7248-M					5740	
BSDN-9642-M	96 ½"	115	1.6	NEMA 5-15P	7439	20F
BSDN-9248-M					7640	

TECHNICAL SPECS FOR SELF-CONTAINED REFRIGERATION AVAILABLE UPON REQUEST

### STANDARD FEATURES:

- Remote refrigeration.
- Medium display depth 35 ⅝".
- Three interior finish options, textured powdercoat black, white or brushed stainless steel.
- Black or white painted front exterior metal décor pan with a 4" vertical flat panel.
- LED light strips are mounted on the top ledge of the display area.

### CUSTOM FEATURES:

EXTERIOR FINISHES	
Formica laminate finish: _____	
Other laminate finish (specify): _____	
Brushed Stainless Steel	
Oak Veneer Plywood	
Birch/Maple Veneer Plywood	
- Vertical grain direction	
- Horizontal grain direction	
- Clear Finish	
- Stain Finish	
11 ½"H extended front décor panel	
18"H extended front décor panel	
1" black McCue impact bumper strip applied to the front of the display	
Other McCue impact bumper sizes and colors available	

### ADDITIONAL FEATURES:

- Designed to maintain the critical temperature of the products within the display at a range of 38-41°F (3-5°C) with an ambient atmosphere of 75°F (24°C)/55% humidity. Designed for holding pre-chilled product only.
- 1-year parts and labor warranty.

END PANELS	
The same interior/exterior laminate	
Brushed stainless steel interior	
Mirrored laminate interior	
Tempered glass pane	
Mirrored tempered glass pane	
1" black McCue impact bumper strip applied to the end panel	
Other McCue impact bumper sizes and colors available	

MISCELLANEOUS	
Small display depth 31 ¾"	
Large display depth 43 ¼"	
Top mounted roll-down thermal night curtain	
Additional metal shelf with integrated LED lighting	
Aluminum or painted price tag mould attached to the front of the shelves	
Plastic price stripping attached to the front of the shelves	
2 ½"H x 13"D Single step riser	
4"H x 9"D Single step riser	
4"H x 6 ½"D 3 Tier stepped riser	
Clip-in angled base inlay	
Top mounted clip-on dry shelves	
Clip-on sign panels	
Self-contained refrigeration with the new R-513A (non-ozone depleting, low global warming potential) refrigerant	

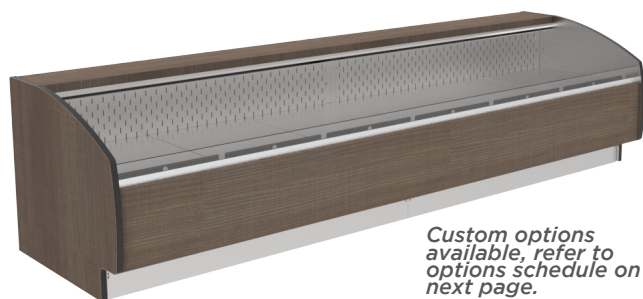
# 18" FRONT HEIGHT WITH A 30" REAR HEIGHT

## BSD - BAKERY SINGLE LEVEL SELF-SERVICE DISPLAY

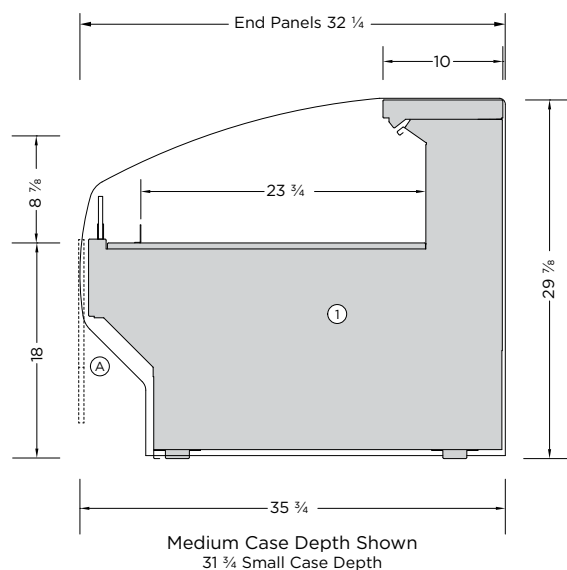
 REFRIGERATED

CREATE A DISPLAY LINE-UP OF ALMOST ANY LENGTH WITH A COMBINATION OF STANDARD DISPLAY LENGTHS

*Standard features shown*



*Custom options available, refer to options schedule on next page.*



MODEL	LENGTH
BSDL-3630-M	36 1/4"
BSDL-4830-M	48 1/4"
BSDL-6030-M	60 3/8"
BDSL-7230-M	72 1/2"
BSDL-9630-M	96 1/2"

Length does not include end panels. Add 1" per panel.

### FEATURES:

- Remote refrigeration option only for this display profile.
- Three display depths available, refer to the dimensioned illustration. ①
- Many exterior finish options, powdercoat paint, brushed stainless steel, laminates, and natural wood finishes.
- Three interior finish options, textured powdercoat black, white or brushed stainless steel.
- LED light strips are mounted on the top ledge of the display.
- The LED lighting is available in various light intensities/spectrums.
- 1 1/2" front product stop integrated to the base inlays.
- Front base décor panel options (A) provide a more customized look.
- Many display options offered. Refer to the options schedules on the next page.
- Engineered for serviceability and flexibility.
- Removeable base deck panels for easy cleaning and service.
- ETL electrical certification and NSF 7 standards.

Note: Information and specifications may change due to engineering improvements.





# 18" FRONT HEIGHT WITH A 30" REAR HEIGHT

## BSD - BAKERY SINGLE LEVEL SELF-SERVICE DISPLAY

REFRIGERATED

TECHNICAL SPECS (REMOTE REFRIGERATION)						
MODEL	LENGTH	VOLTS	AMPS	PLUG	BUTH	SUCTION
BSDL-3630-M	36 ¼"	115	0.7	NEMA 5-15P	2719	20F
BSDL-4830-M	48 ¼"	115	0.9	NEMA 5-15P	3619	20F
BSDL-6030-M	60 ¾"	115	0.9	NEMA 5-15P	4528	20F
BSDL-7230-M	72 ½"	115	0.9	NEMA 5-15P	5438	20F
BSDL-9630-M	96 ½"	115	1.1	NEMA 5-15P	7238	20F

### STANDARD FEATURES:

- Remote refrigeration.
- Medium display depth 35 ⅝".
- Three interior finish options, textured powdercoat black, white or brushed stainless steel.
- Black or white painted front exterior metal décor pan with a 4" vertical flat panel.
- LED light strips are mounted on the top ledge of the display area.

### CUSTOM FEATURES:

EXTERIOR FINISHES	
Formica laminate finish: _____	
Other laminate finish (specify): _____	
Brushed Stainless Steel	
Oak Veneer Plywood	
Birch/Maple Veneer Plywood	
- Vertical grain direction	
- Horizontal grain direction	
- Clear Finish	
- Stain Finish	
11 ½"H extended front décor panel	
1" black McCue impact bumper strip applied to the front of the display	
Other McCue impact bumper sizes and colors available	

### ADDITIONAL FEATURES:

- Designed to maintain the critical temperature of the products within the display at a range of 38-41°F (3-5°C) with an ambient atmosphere of 75°F (24°C)/55% humidity. Designed for holding pre-chilled product only.
- 1-year parts and labor warranty

END PANELS	
The same interior/exterior laminate	
Brushed stainless steel interior	
Mirrored laminate interior	
Tempered glass pane	
Mirrored tempered glass pane	
1" black McCue impact bumper strip applied to the end panel	
Other McCue impact bumper sizes and colors available	

MISCELLANEOUS	
Small display depth 31 ¾"	
Large display depth 43 ¼"	
Top mounted roll-down thermal night curtain	
2 ½"H x 13"D Single step riser	
4"H x 9"D Single step riser	
Clip-in angled base inlay	
Top mounted clip-on dry shelves	
Clip-on sign panels	

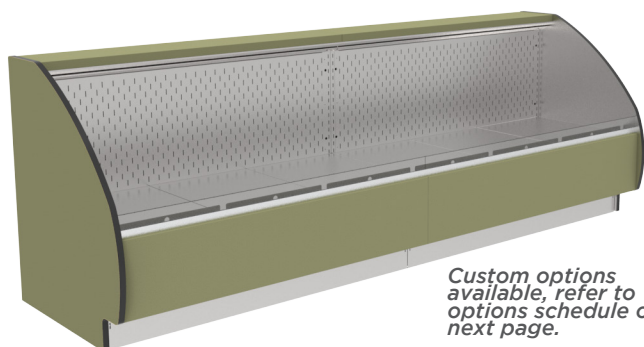
# 18" FRONT HEIGHT WITH A 36" & 42" REAR HEIGHT

## BSD - BAKERY SINGLE LEVEL SELF-SERVICE DISPLAY

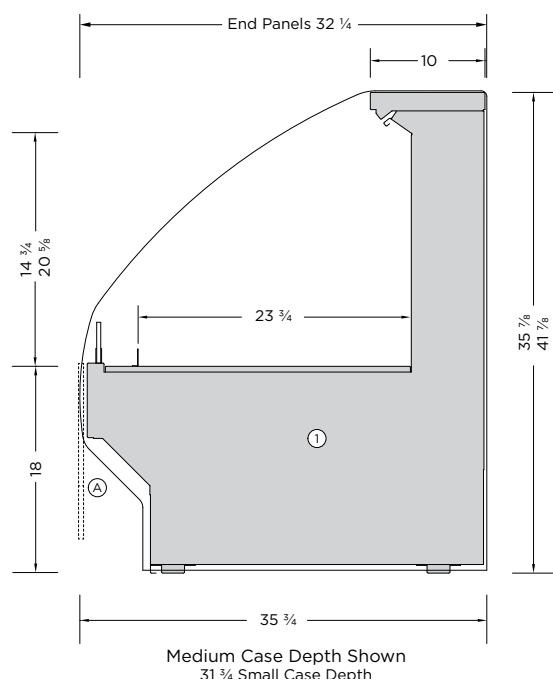
 REFRIGERATED

CREATE A DISPLAY LINE-UP OF ALMOST ANY LENGTH WITH A COMBINATION OF STANDARD DISPLAY LENGTHS

*Standard features shown*



*Custom options available, refer to options schedule on next page.*



MODEL	LENGTH
BSDL-3636-M	36 1/4"
BSDL-4836-M	48 1/4"
BSDL-6036-M	60 3/8"
BSDL-7236-M	72 1/2"
BSDL-9636-M	96 1/2"
BSDL-3642-M	36 1/4"
BSDL-4842-M	48 1/4"
BSDL-6042-M	60 3/8"
BSDL-7242-M	72 1/2"
BSDL-9242-M	96 1/2"

Length does not include end panels. Add 1" per panel.

### FEATURES:

- Remote refrigeration option only for this display profile.
- Three display depths available, refer to the dimensioned illustration. ①
- Many exterior finish options, powdercoat paint, brushed stainless steel, laminates, and natural wood finishes.
- Three interior finish options, textured powdercoat black, white or brushed stainless steel.
- LED light strips are mounted on the top ledge of the display.
- The LED lighting is available in various light intensities/spectrums.
- 1 1/2" front product stop integrated to the base inlays.
- Front base décor panel options (A) provide a more customized look.
- Many display options offered. Refer to the options schedules on the next page.
- Engineered for serviceability and flexibility.
- Removeable base deck panels for easy cleaning and service.
- ETL electrical certification and NSF 7 standards.

Note: Information and specifications may change due to engineering improvements.



# 18" FRONT HEIGHT WITH A 36" & 42" REAR HEIGHT

## BSD - BAKERY SINGLE LEVEL SELF-SERVICE DISPLAY

REFRIGERATED

TECHNICAL SPECS (REMOTE REFRIGERATION)						
MODEL	LENGTH	VOLTS	AMPS	PLUG	BUTH	SUCTION
BSDL-3636-M	36 ¼"	115	1.2	NEMA 5-15P	2794	20F
BSDL-3642-M					2870	
BSDL-4836-M	48 ¼"	115	1.4	NEMA 5-15P	3719	20F
BSDL-4842-M					3820	
BSDL-6036-M	60 ¾"	115	1.4	NEMA 5-15P	4654	20F
BSDL-6042-M					4780	
BSDL-7236-M	72 ½"	115	1.4	NEMA 5-15P	5589	20F
BSDL-7242-M					5740	
BSDL-9636-M	96 ½"	115	1.6	NEMA 5-15P	7439	20F
BSDL-9242-M					7640	

### STANDARD FEATURES:

- Remote refrigeration.
- Medium display depth 35 ⅝".
- Three interior finish options, textured powdercoat black, white or brushed stainless steel.
- Black or white painted front exterior metal décor pan with a 4" vertical flat panel.
- LED light strips are mounted on the top ledge of the display area.

### CUSTOM FEATURES:

EXTERIOR FINISHES	
Formica laminate finish: _____	
Other laminate finish (specify): _____	
Brushed Stainless Steel	
Oak Veneer Plywood	
Birch/Maple Veneer Plywood	
- Vertical grain direction	
- Horizontal grain direction	
- Clear Finish	
- Stain Finish	
11 ½"H extended front décor panel	
1" black McCue impact bumper strip applied to the front of the display	
Other McCue impact bumper sizes and colors available	

### ADDITIONAL FEATURES:

- Designed to maintain the critical temperature of the products within the display at a range of 38-41°F (3-5°C) with an ambient atmosphere of 75°F (24°C)/55% humidity. Designed for holding pre-chilled product only.
- 1-year parts and labor warranty.

### END PANELS

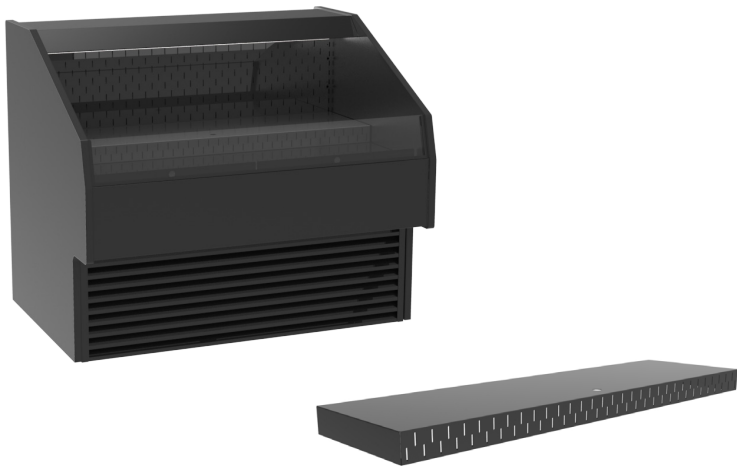
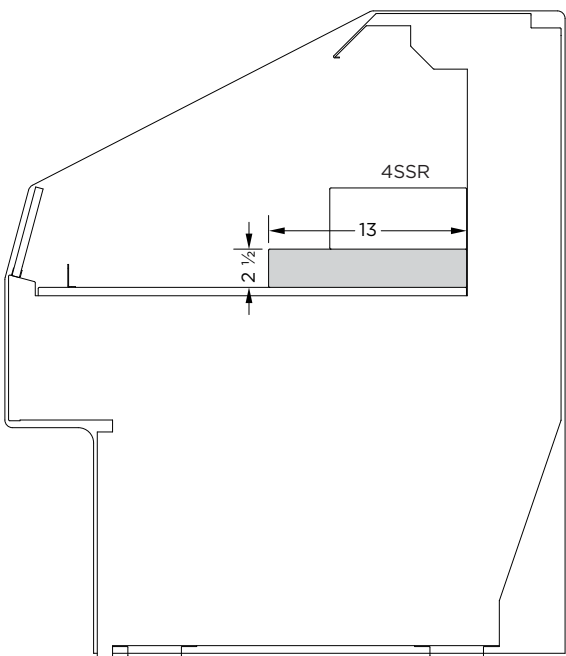
The same interior/exterior laminate	
Brushed stainless steel interior	
Mirrored laminate interior	
Tempered glass pane	
Mirrored tempered glass pane	
1" black McCue impact bumper strip applied to the end panel	
Other McCue impact bumper sizes and colors available	

### MISCELLANEOUS

Small display depth 31 ¾"	
Large display depth 43 ¼"	
Top mounted roll-down thermal night curtain	
Additional metal shelf with integrated LED lighting	
Aluminum or painted price tag mould attached to the front of the shelves	
Plastic price stripping attached to the front of the shelves	
2 ½"H x 13"D Single step riser	
4"H x 9"D Single step riser	
4"H x 6 ½"D 3 Tier stepped riser	
Clip-in angled base inlay	
Top mounted clip-on dry shelves	
Clip-on sign panels	

# REFRIGERATED DISPLAY ACCESSORIES

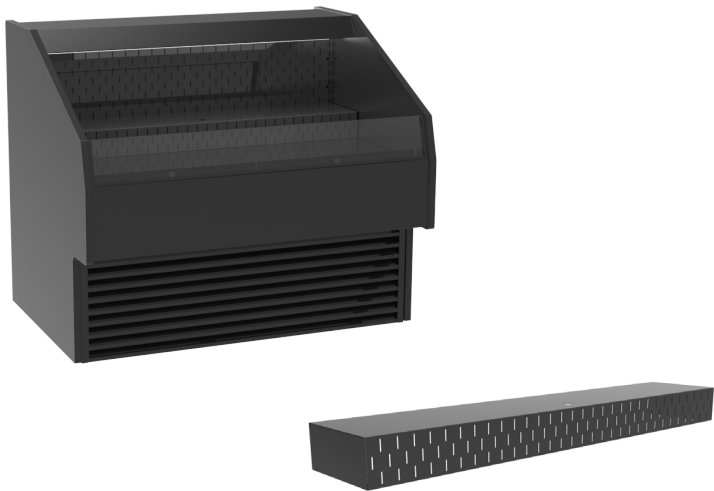
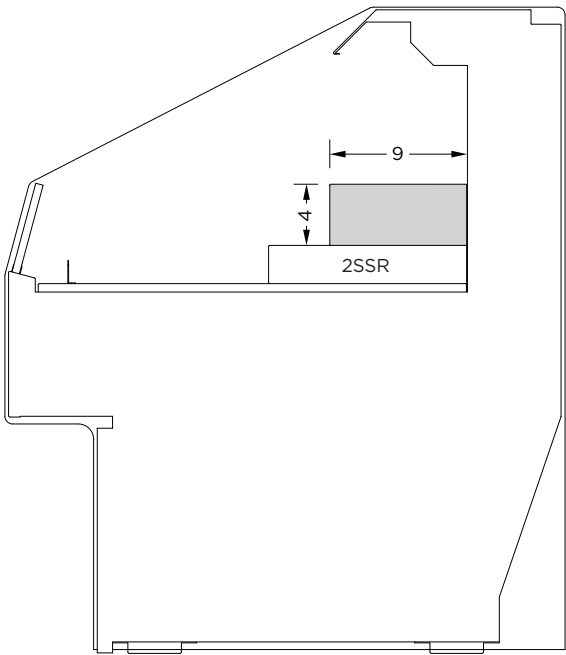
## 2 1/2" X 13" SINGLE STEP RISER



DISPLAY WIDTH	PART #	QTY
24"	2SSR-24-P*, S*	1
38"	2SSR-38-P, S	1
48"	2SSR-48-P, S	1
57"	2SSR-57-P, S	1
76"	2SSR-38-P, S	2
96"	2SSR-48-P, S	2

P = Painted powdercoat finish  
S = Brushed stainless steel

## 4" X 9" SINGLE STEP RISER



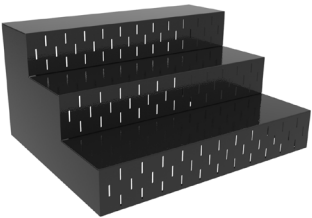
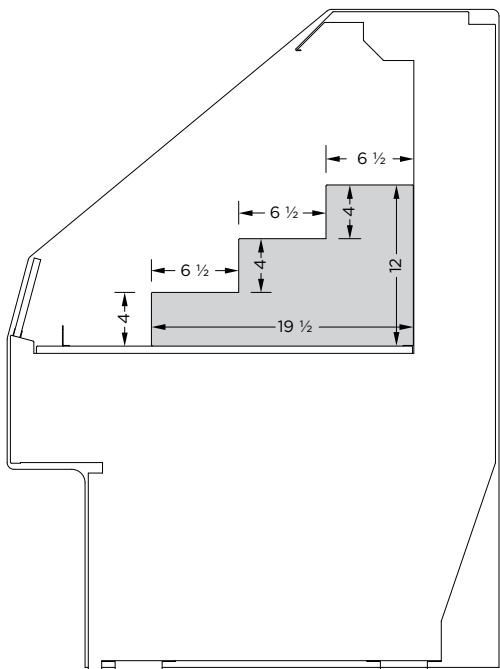
DISPLAY WIDTH	PART #	QTY
24"	4SSR-24-P*, S*	1
38"	4SSR-38-P, S	1
48"	4SSR-48-P, S	1
57"	4SSR-57-P, S	1
76"	4SSR-38-P, S	2
96"	4SSR-48-P, S	2

P = Painted powdercoat finish  
S = Brushed stainless steel



# REFRIGERATED DISPLAY ACCESSORIES

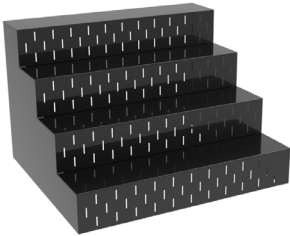
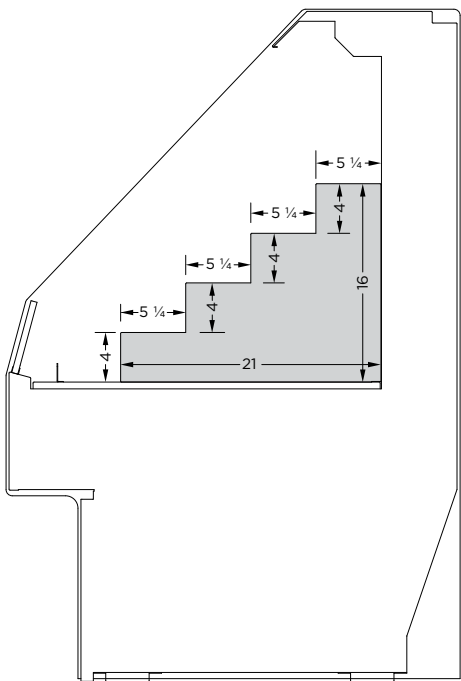
## THREE TIER STEPPED RISER



DISPLAY WIDTH	PART #	QTY
24"	3TSR-24-P*, S*	1
38"	3TSR-19-P, S	2
48"	3TSR-24-P, S	2
57"	3TSR-19-P, S	3
76"	3TSR-19-P, S	4
96"	3TSR-24-P, S	4

P = Painted powdercoat finish  
S = Brushed stainless steel

## FOUR TIER STEPPED RISER

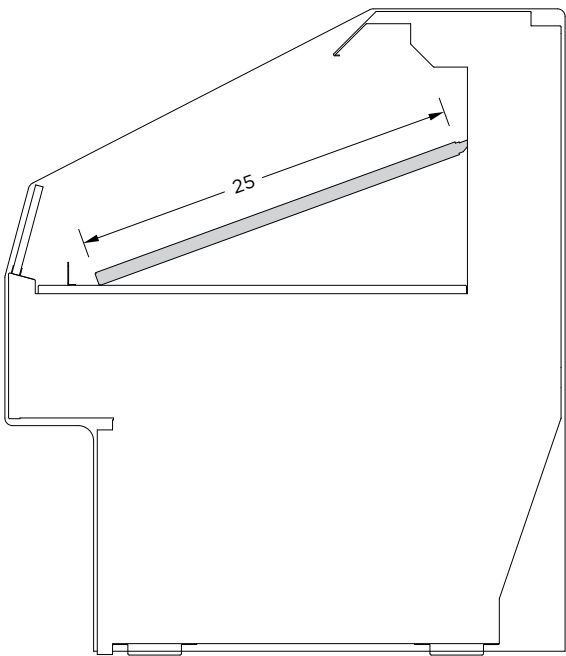


DISPLAY WIDTH	PART #	QTY
24"	4TSR-24-P*, S*	1
38"	4TSR-19-P, S	2
48"	4TSR-24-P, S	2
57"	4TSR-19-P, S	3
76"	4TSR-19-P, S	4
96"	4TSR-24-P, S	4

P = Painted powdercoat finish  
S = Brushed stainless steel

# REFRIGERATED DISPLAY ACCESSORIES

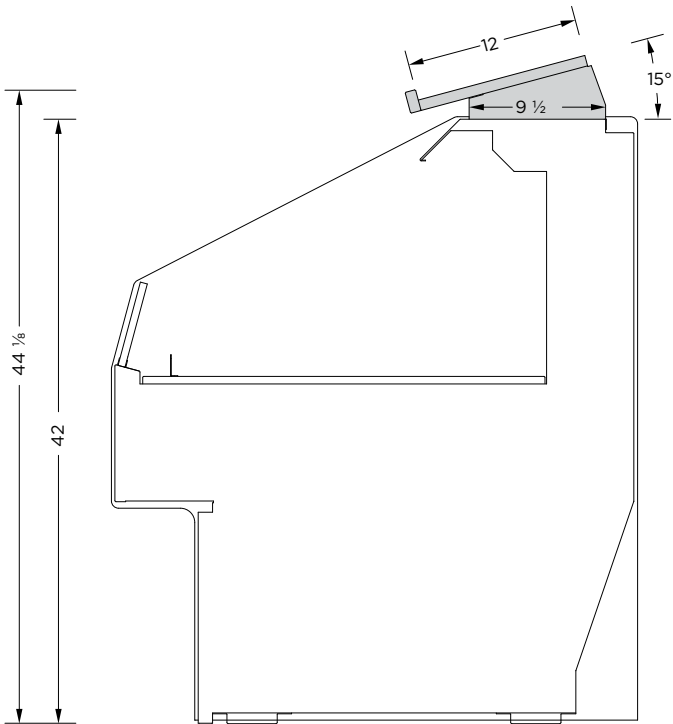
## CLIP-IN ANGLED BASE INLAY



DISPLAY WIDTH	PART #	QTY
24"	ABI-24-P*, S*	1
38"	ABI-38-P, S	1
48"	ABI-48-P, S	1
57"	ABI-57-P, S	1
76"	ABI-38-P, S	2
96"	ABI-48-P, S	2

P = Painted powdercoat finish  
S = Brushed stainless steel

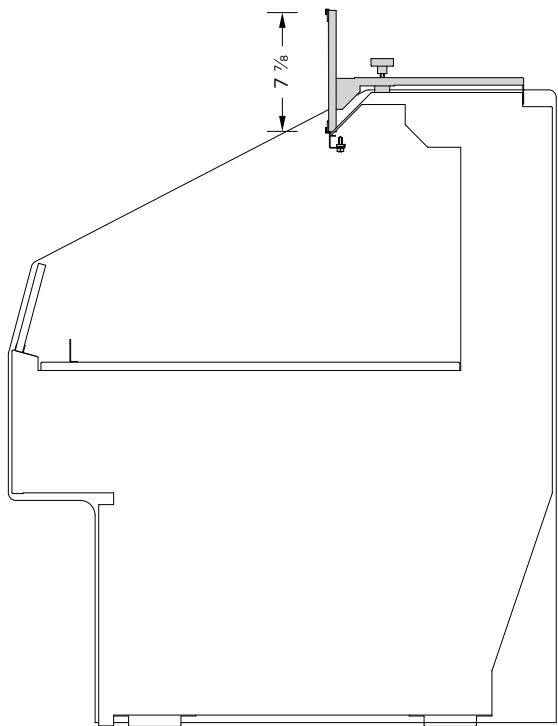
## TOP MOUNTED CLIP-ON DRY SHELF



DISPLAY WIDTH	PART #
24"	CDS-24
38"	CDS-38
48"	CDS-48

# REFRIGERATED DISPLAY ACCESSORIES

## CLIP-ON SIGN PANEL



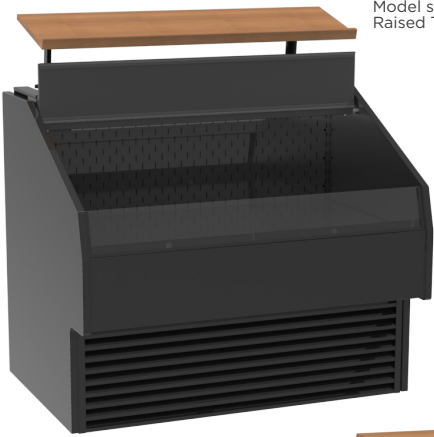
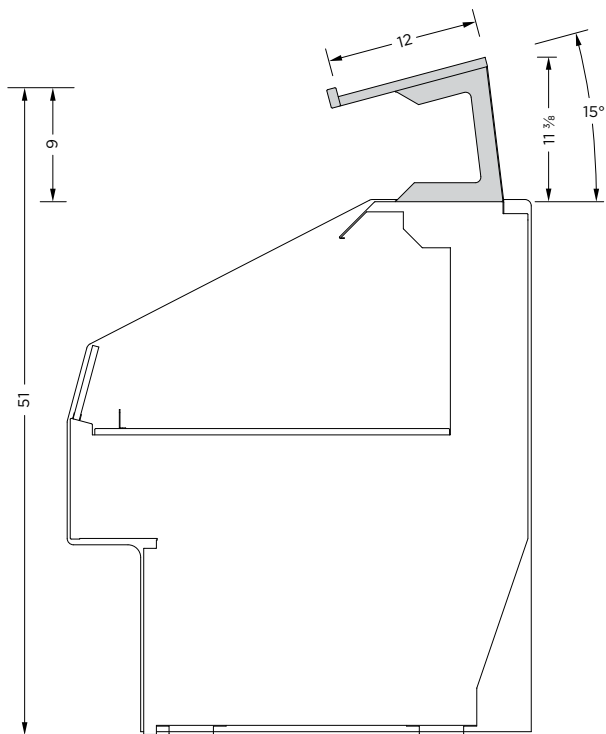
DISPLAY WIDTH	PART #
24"	CSP-24-P*, S*
38"	CSP-38-P, S
48"	CSP-48-P, S

P = Painted powdercoat finish  
S = Brushed stainless steel

### FEATURES:

- Plastic channels top & bottom to hold paper signs
- 3-track sign available

## RAISED TOP MOUNTED CLIP-ON DRY SHELF

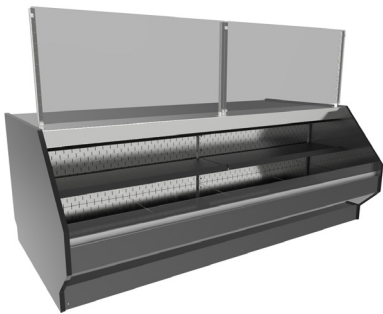


Model shown w/Clip-On Sign Panel & Raised Top Mounted Clip-On Dry Shelf

DISPLAY WIDTH	PART #
24"	RCDS-24
38"	RCDS-38
48"	RCDS-48

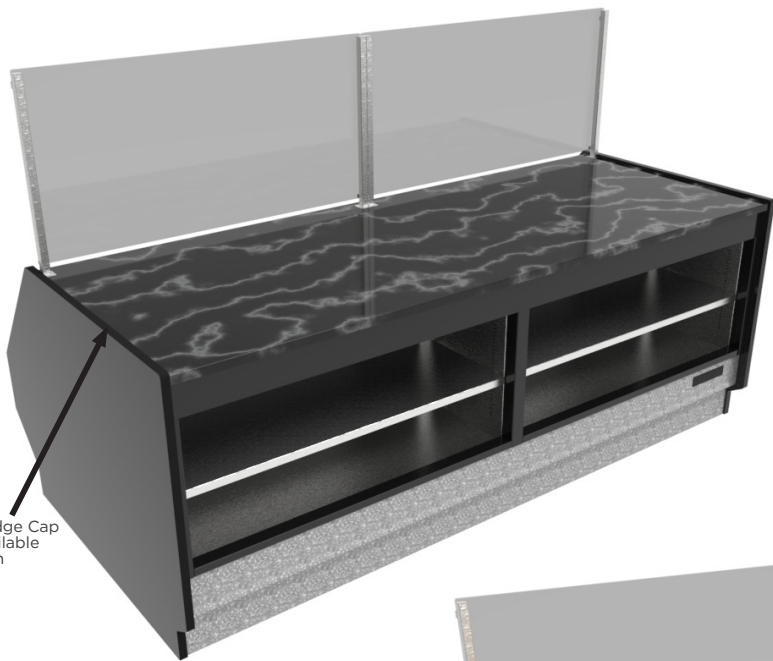


# BOUW - BAKERY SELF-SERVICE DISPLAY & REAR PREPARTATION STATION



Rear Cake Decorating Station with Dry Base Storage

Page 62



Many Top Ledge Cap  
Materials Available  
Marble Shown



Many Top Ledge Cap  
Materials Available  
Natural Wood Cutting  
Board Shown

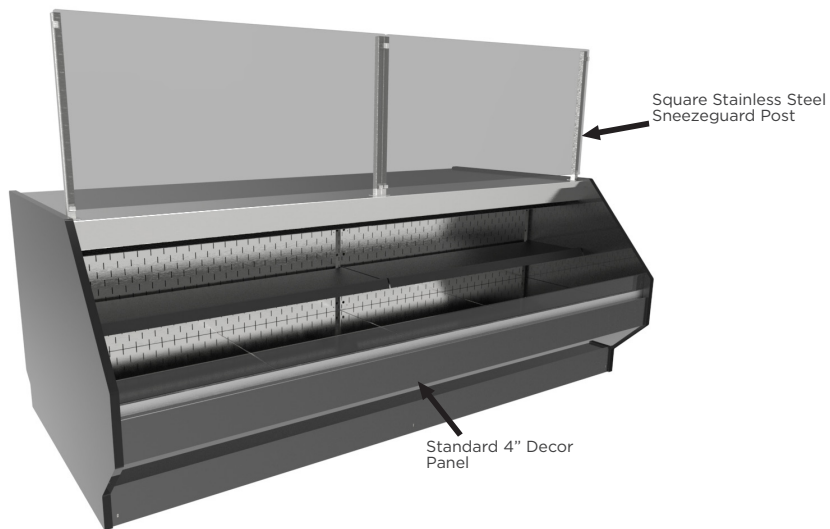


# BOUW - FEATURES TO MAKE YOUR SHOWCASE WHAT YOU NEED IT TO BE

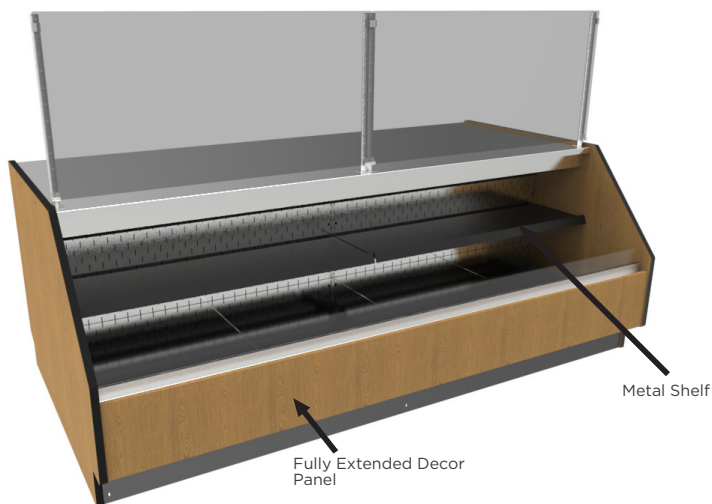
Typical BOUW



Standard Square Stainless Steel Sneezeguard Post



Custom Square Stainless Steel Sneezeguard Post

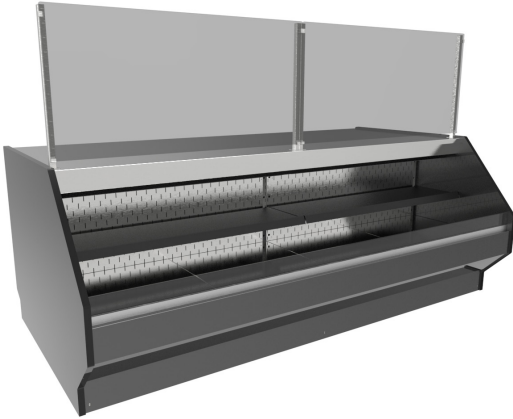


# REAR CAKE DECORATING STATION WITH DRY BASE STORAGE

BOUW - BAKERY SELF-SERVICE DISPLAY & REAR PREPARATION STATION

 REFRIGERATED

CREATE A DISPLAY LINE-UP OF ALMOST ANY LENGTH WITH A COMBINATION OF STANDARD DISPLAY LENGTHS



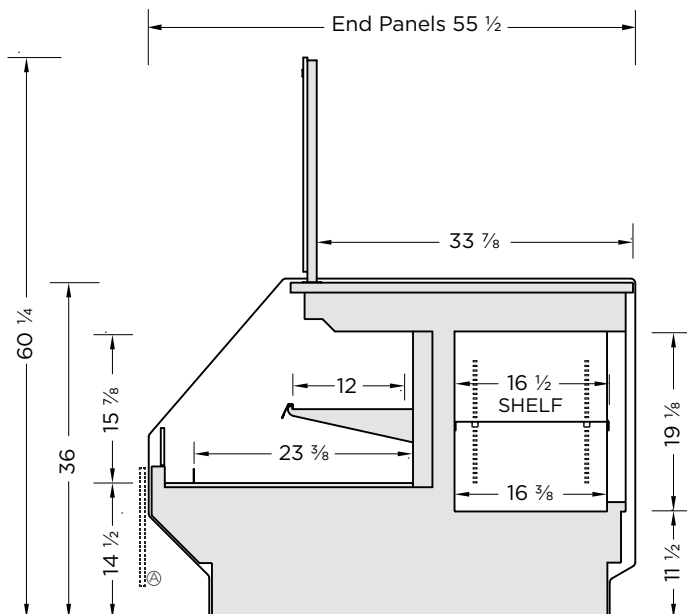
MODEL	LENGTH
BOUW-4842-MR	50 1/4"
BOUW-5742-MR	62 3/8"
BOUW-7642-MR	74 1/2"
BOUW-9642-MR	98 1/2"
BOUW-4848-MS	50 1/4"
BOUW-4848-MS	62 3/8"
BOUW-7648-MS	74 1/2"
BOUW-9642-MS	98 1/2"

Length does not include end panels. Add 1" per panel.

## FEATURES:

- 3 interior finishes available
- Many exterior colors, patterns and wood grain finishes available
- Sneeze guard glass separating product display from food prep area. 3 options available
- Rear dry storage
- Stainless steel top surface
- Removable cutting board
- Engineered for serviceability & adjustability
- Removable base deck panels for easy cleaning and service
- LED lighting located under the top ledge
- Various LED color corrected and light intensities available
- Front base decor panel options available <sup>(A)</sup>
- Many options available. Refer to the options schedule on next page

Note: Information and specifications may change due to engineering improvements.



## ADDITIONAL FEATURES:

- Designed to maintain product temperature of 38-41°F with an ambient atmosphere of 75°F/55% humidity
- ETL Listed and Sanitation certified to NSF 7
- 1-year Parts & Labour Warranty for Self-Contained Refrigeration
- 1-year Parts & Labour Warranty



# REAR CAKE DECORATING STATION WITH DRY BASE STORAGE

BOUW - BAKERY SELF-SERVICE DISPLAY & REAR PREPARATION STATION

REFRIGERATED

## TECHNICAL SPECS (REMOTE REFRIGERATION)

MODEL	LENGTH	VOLTS	AMPS	PLUG	BUTH	SUCTION
BOUW-4842-MR	50 ¼"	115	1.5	NEMA 5-15P	3920	20F
BOUW-5742-MR	62 ⅝"	115	1.5	NEMA 5-15P	4560	20F
BOUW-7642-MR	74 ½"	115	2.9	NEMA 5-15P	5960	20F
BOUW-9642-MR	98 ½"	115	3.1	NEMA 5-15P	6920	20F

## TECHNICAL SPECS (SELF-CONTAINED REFRIGERATION)

MODEL	LENGTH	VOLTS	AMPS	PLUG
BOUW-4848-MS	50 ¼"	115/230	8.4	NEMA L14-20P
BOUW-5748-MS	62 ⅝"	115/230	8.4	NEMA L14-20P
BOUW-7648-MS	74 ½"	115/230	9.9	NEMA L14-20P
BOUW-9642-MS	98 ½"			NEMA L14-20P

## INTERIOR FINISHES

Brushed Stainless Steel Base inlays with textured black shelf standards and shelf supports	
Textured Black	
Textured White	

## EXTERIOR FINISHES

Black	
White	
Brushed Stainless Steel	
Painted Metal Standard _____	
Custom _____	
Formica laminate finish: _____	
Other laminate finish (specify): _____	
Oak Veneer Plywood	
- Vertical grain direction	
- Horizontal grain direction	
Birch/Maple Veneer Plywood	
- Vertical grain direction	
- Horizontal grain direction	
Clear Finish applied to Veneer	
Stain Finish Choice _____	
1" black McCue impact bumper strip applied to the front of the display	
Other McCue impact bumper strip colors Available upon request	

## FRONT TEMPERED GLASS SNEEZEGUARD

- Square Stainless Steel Post	
- Round Stainless Steel Post	
- Base Mounted	

## END PANELS

Solid	
Interior laminate the same as exterior	
Black interior	
White interior	
Brushed Stainless Steel interior	
Mirrored interior	
- Black T-mould edging	
- White T-mould edging	
- Stainless Steel T-mould edging	
1" black McCue impact bumper strip applied to the outside of the end panel	
Other McCue impact bumper strip colors available upon request	

## COUNTERTOP

Rear Countertop	
- Brushed Stainless Steel	
- White Nylon Cutting Boards	
- Natural Maple Cutting Boards	
Front Countertop	
- Brushed Stainless Steel	
- Granite	
- Quartz	
- Solid Surfacing	

## MISCELLANEOUS

Pull down night curtain	
Tempered glass shelf	
Tempered glass shelf	
2 ½" Inlay Riser Step	
Remove shelf	

## HOW TO CALCULATE LENGTH OF LINE-UP

Available Showcase Section Lengths (Without End Panels)			
Nominal Length (Feet)	Nominal Length (Inches)	Actual Length (Fractional)	Actual Length (Decimal)
3'	38"	38 ¼"	38.250"
4'	48"	47 ⅞"	47.875"
5'	57"	57 ¾"	57.375"
6'	76"	76 ½"	76.500"
8'	96"	95 ⅝"	95.625"

### Procedure:

1. Take total desired length of line-up in feet and divide by eight.
2. Split resulting number into two parts; the whole number and the decimal number.
3. The whole number represents the number of eight-foot sections.
4. The decimal number needs to be multiplied by eight to determine the nominal length of the final section.

### Example:

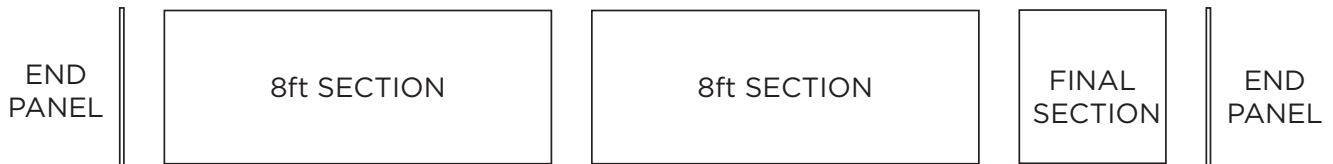
1. Desired length is 27ft;  
$$27 \div 8 = 3.375$$
2. Whole number is 3 and decimal number is 0.375.
3. The 3 represents the number of eight-foot sections.
4. The decimal number of 0.375 multiplied by eight is used to determine the final section length (in this example it is a three-foot section).

$$0.375 \times 8 = 3$$





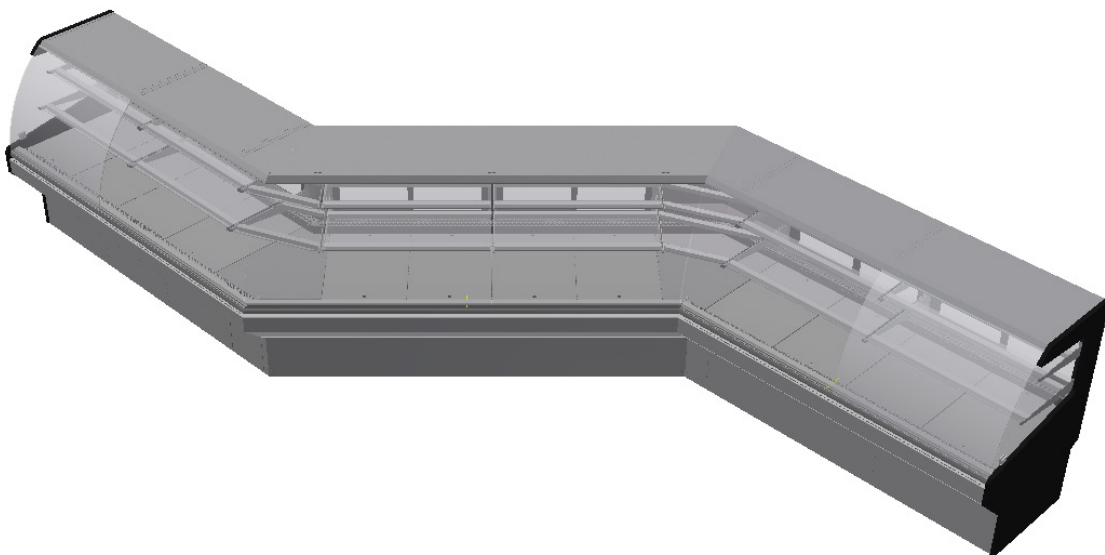
⇓ BROKEN DOWN INTO SECTIONS ⇓



In general, most line-ups can be broken down into 8ft sections with a single final section making up the remaining length desired as shown in the figure above. The line-up is then completed with a 1" thick end panel on each end. The chart on the page before can be used to calculate the actual length of the line-up.

**Note:**

**This is a guideline, exact configuration and final length will need to be determined by engineering.**



## ACTUAL CASE LENGTH CALCULATION OF LINE-UP

To determine the actual length of the line-up:

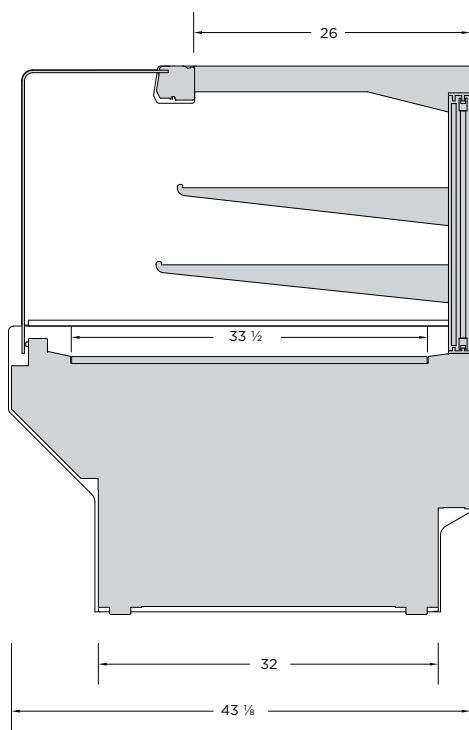
1. Take the whole number from the procedure mentioned on the previous page and multiply it by the **actual length (decimal)** of an 8ft section.
2. Take the final section length value from the procedure mentioned on the previous page and determine the **actual length (decimal)** of the section.
3. Add 2 inches to actual length value to represent an end panel on each end.
4. Divide the final value obtained in the above step by 12 to determine the length of the line-up in feet.

Example:

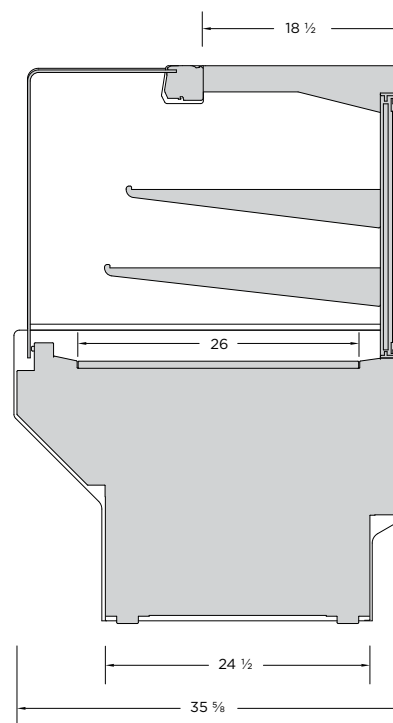
1. Whole number in the previous example was 3; actual length of three 8ft sections is
$$3 \times 96.625 = 286.875$$
2. Final section length in the previous example was a 3ft section; actual length of final section is 38.25
3.  $286.875 + 38.25 = 325.125$  inches
4.  $325.125 + 2 = 327.125$  inches
5.  $327.125 \div 12 = 27.26$  feet.

Total **actual** length of the lineup is 27.26ft (or 27 ft 3 1/8 in)

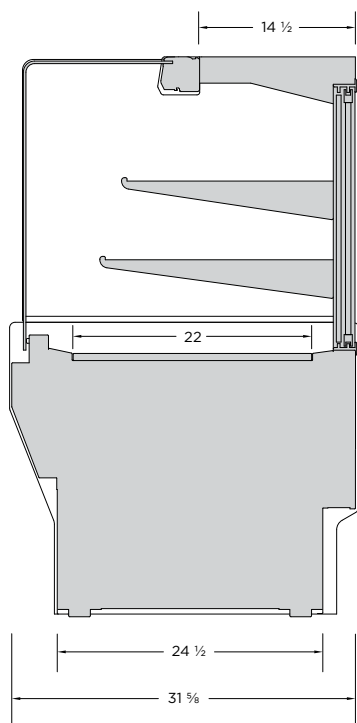
# CASE DEPTHS



Large Frame Depth



Medium Frame Depth



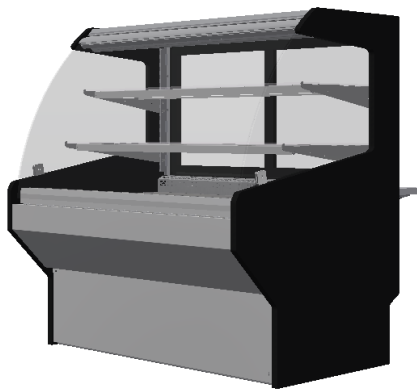
Small Frame Depth

## SHOWCASE CONSTRUCTION

- Concept: sheet metal construction creates a strong, rigid, high-quality showcase that allows for easy customization when required
- Full-length accessible wire way allows for easy wiring & component replacement
- Standardized design of framework allows for wide variety of exterior and interior materials/finishes
- Sled-runner base and adjustable struts make installation and alignment easy
- Easy-to-access areas for electrical, plumbing and refrigeration installation

## LIFT-UP GLASS

Glass Front Closed



Glass Front Open



### Positive

- Easier to gain access to clean and perform maintenance inside case
- Easier to load product into the front of case
- Easier access to adjust shelves

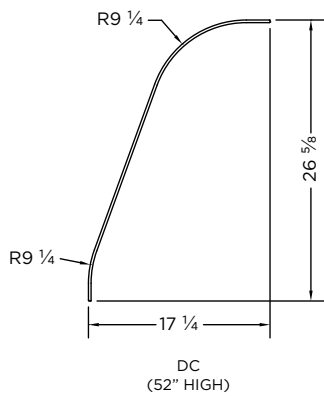
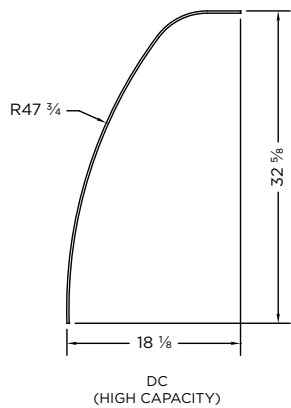
### Negative

- More expensive
- Safety issues - chance of hitting head on glass
- Increase in maintenance of parts

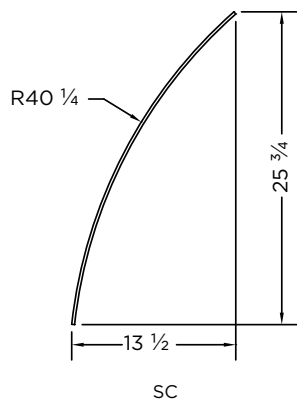


# GLASS PROFILES

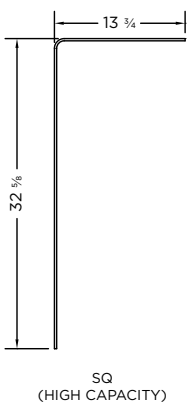
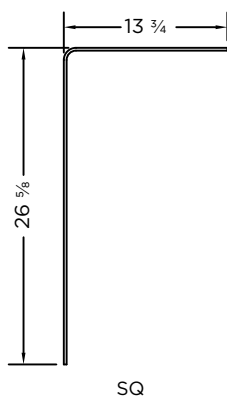
DC~ Double Curve



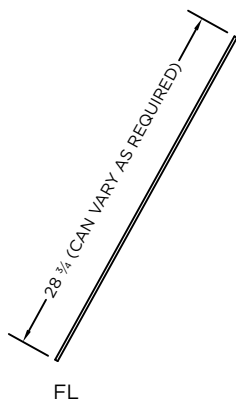
SC~ Single Curve



SQ~ Square



FL~ Flat



## SQUARE GLASS DESIGN. WHY OURS IS BETTER

- Concept: single-piece square glass design creates sharp appearance showcase with increased product capacity
- Single piece design reduces complexity and cost
- Tight bend radius has very little effect on sightlines
- Available in tilt-out or lift-up operation
- Square glass profile allows for ~15% increase in product capacity (vs. other glass setups)
- Vertical front panel of glass allows for product to be displayed up to 6" closer to customer (vs. other glass setups)
- Cost effective
- Less complex = less maintenance
- Less glass alignment issues
- Better presentation of product
- No glass chipping
- Cleaner look
- Less bulky hardware = better visibility
- No sagging/  
breaking hardware



# FRONT DECOR PANEL STYLES



Standard 4" Decor Panel



Standard 11 1/2" Decor Panel



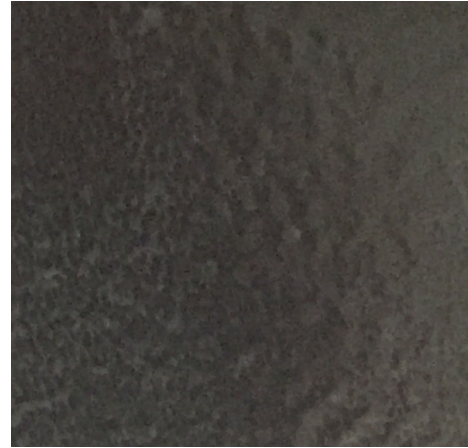
Extended Decor Panel

# EXTERIOR FINISHES

Laminate



Textured Painted Metal



Vinyl



Wood



Stainless Steel



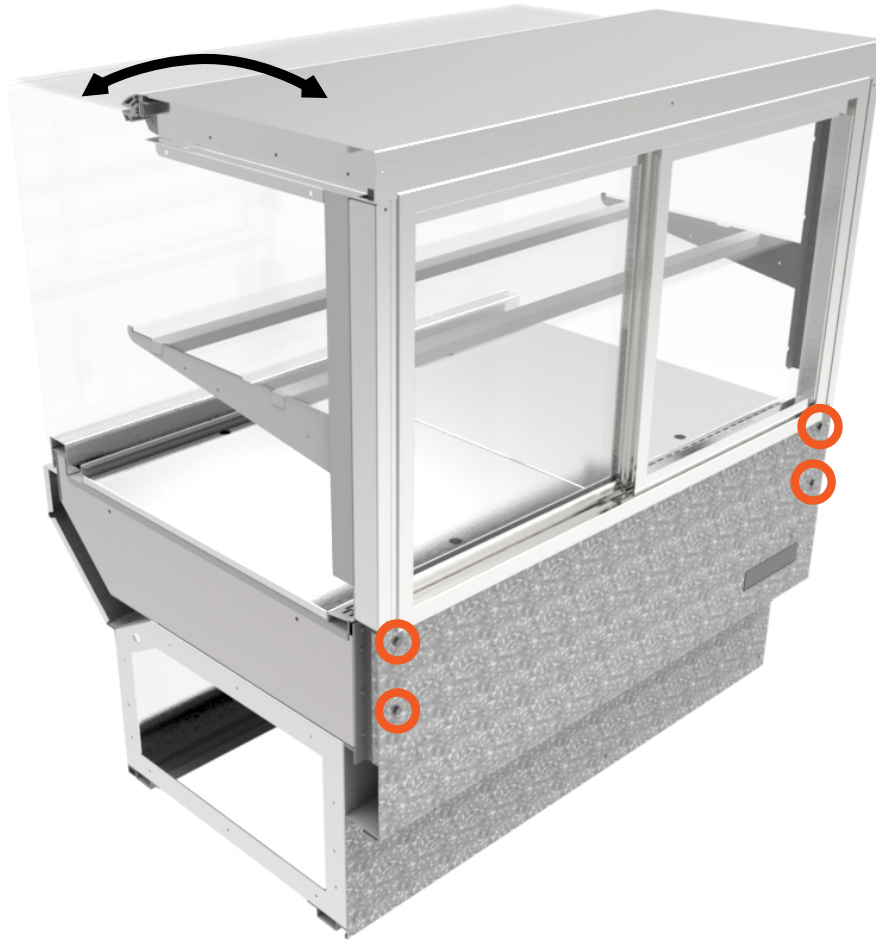
Wood Panel





## ADJUSTABILITY OF THE CASES

Our unique strut system is designed to allow you to slightly adjust the angle at which the front glass, shelves and top

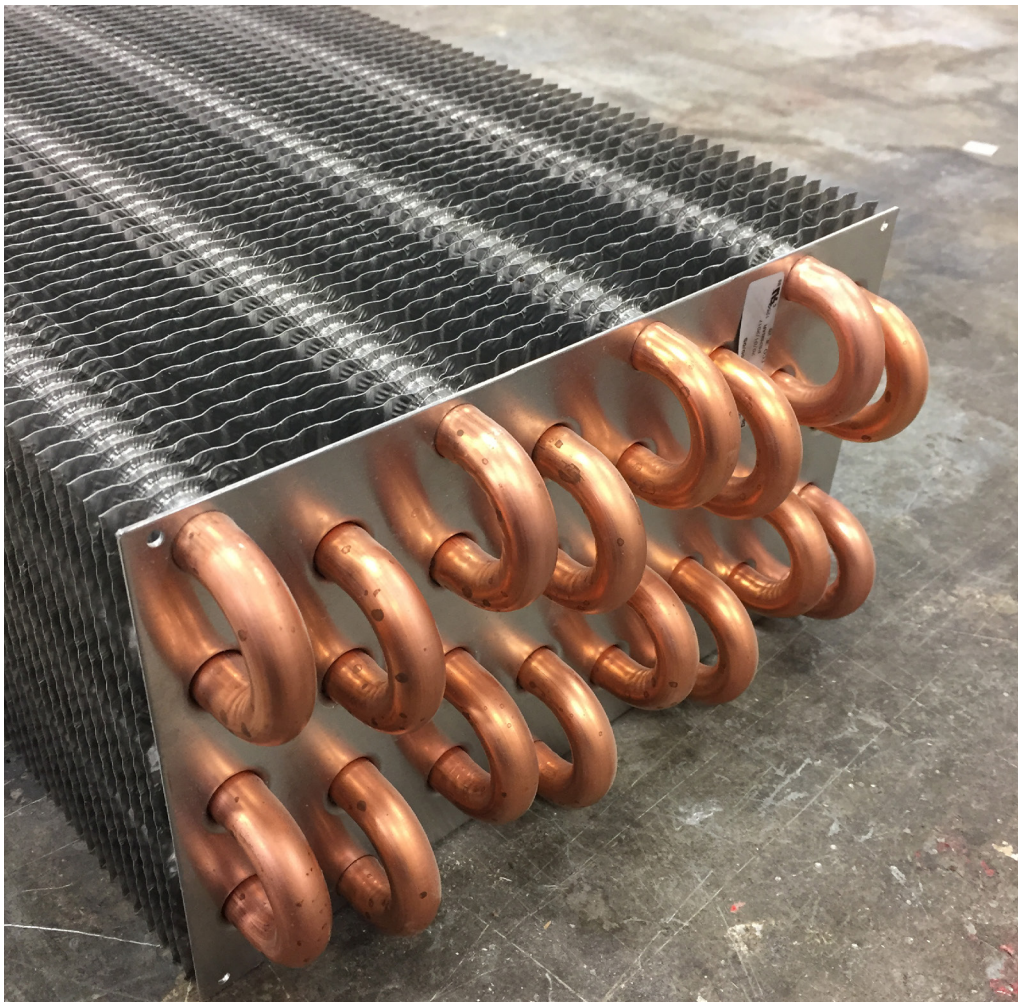


deck (typically metal or glass) sit. Adjusting the two bolts (circled in red in the image above) located at the rear of the unit on either end of a case section will allow the strut system to be tilted forward and down or back and up as indicated by the black arrow. This will allow you

to level and line up your front glass and shelves to help create the look of a seamless case and to better help showcase your product.

# COLD AND SLOW REFRIGERATION TECHNOLOGY

- Concept: move more air, more slowly
- Evaporator coils are multi circuit with staggered tubes and ripple fins for improved cooling and efficiency (Heresite dipping available)
- Back of speed-controlled small fans lifts air to let it drop naturally instead of high-speed air rotation
- TEV's allow the showcase to operated efficiently over a range of temperatures for more flexibility
- Gets to temp faster
- More even distribution
- Better energy efficiency



# SERVICEABILITY



Electrical Raceway



# LED LIGHTING

	LIGHT TYPE (KELVIN/COLOUR RENDERING INDEX)		
	STANDARD LIGHTS/NATURAL WHITE LIGHTS (4100K, 94+ CRI)	MEAT SPECIAL LIGHTS (4100K, 91 CRI) W/ RED-LIGHT DIODES	GOLDEN WARM WHITE LIGHTS (3500K, 94 CRI)
	Recommended for the enhancement of natural hues of products	Recommended for the enhancement of red & pink hues without compromising the other colours	Recommended for products that contain brown & yellow hues
FRESH MEAT		X	
DELI		X	
SEAFOOD	X	X	
OLIVE BAR	X	X	
SALAD BARS	X	X	
PREPARED FOODS	X	X	
HOT BARS - FRIED FOODS			X
HOT BARS - PREPARED FOODS	X		
FRESH PRODUCE	X		
DAIRY	X		
CAKES	X		
BAKED GOODS/BREADS			X

## Kelvin (K)

- A measure of the colour of a light source. Incandescent lights have a low colour temperature of approximately 2200-3000K and are called warm colours (red-yellowish tone). Warm white LED lamps have a colour temperature between 2000-3000K. Lamps related between 3100-4500K are viewed as white and are called cool colours (bluish-white tone), white lamps above 4600-6000K tend to have blue cast.

## Colour Rendering Index (CRI)

- CRI is a scale from 0 to 100 percent indicating how accurate a “given” light source is at rendering colour when compared to a “reference” light source. The higher the CRI, the better the colour rendering ability.





## Formica® Laminate

Formica Group provides surfaces that fuse beautiful design with purposeful functionality. Formica® Products provide versatile surfacing solutions that are inspired by and adapt to the way people live, work and play.

Formica® Brand Laminate offers a broader range of looks than ever before. Transform spaces with our modern laminates that are as beautiful as they are durable. Mix and match solids, patterns and finishes.

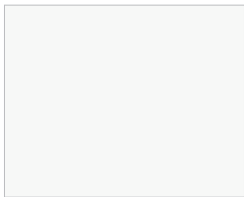
### Product Features:

- Postforming
- Durable and Wear-resistant
- Horizontal and Vertical
- Impact Resistant

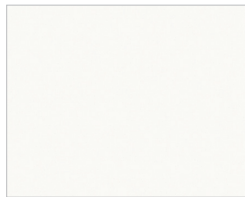
## Formica® EliteForm

Our innovative Formica® EliteForm surfacing technology redefines the performance attributes of high pressure laminate to deliver a more durable laminate for today's market. Formica® Laminate with EliteForm features superior scratch resistance over other laminate brands, the ability to postform to a smaller radius with better blister resistance, and more durable, long-lasting surfaces, including the Gloss texture in horizontal applications. EliteForm comes standard on all Formica® Laminates, at no additional cost.

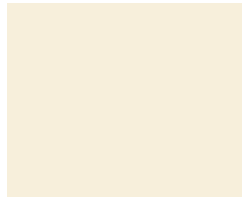
### Price Group One: All Colours are matte (-58) finish



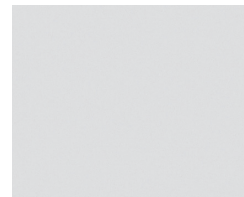
**949**  
White



**7197**  
Dover White



**920**  
Almond



**927**  
Folkstone



**961**  
Fog



**845**  
Spectrum Red



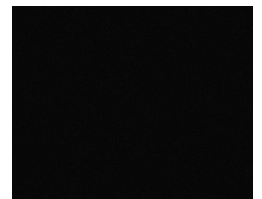
**7897**  
Spectrum Green



**914**  
Marine Blue



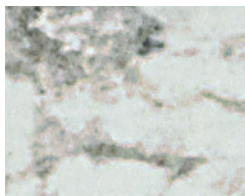
**2297**  
Terril



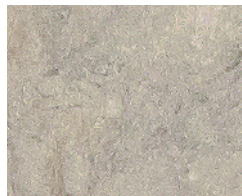
**909**  
Black



**6696**  
Carrara Bianco



**9476**  
White Ice Granite



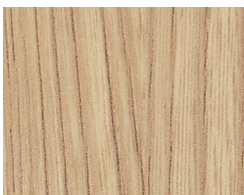
**9497**  
Silver Quartzite



**7732**  
Butterum Granite



**9527**  
Black Shalestone



**8844**  
Aged Ash



**5883**  
Pecan Woodline



**5884**  
Chestnut Woodline



**9283**  
Walnut Riftwood



**6414**  
Black Riftwood

## Price Group Two: All Colours are matte finish



**6997**  
Pale Brushstroke



**6998**  
Wood Brushstroke



**7813**  
Cardboard Solidz



**9319**  
Stainless



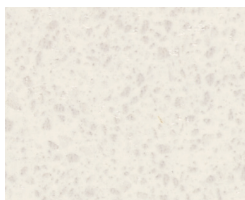
**8918**  
Blackened Steel



**9310**  
White Marble Herringbone



**9285**  
White Twill



**6698**  
Paloma Pear



**503**  
Stone Grafix



**8830**  
Elemental Concrete



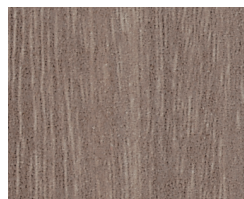
**8841**  
White Ash



**5785**  
Ashwood Beige



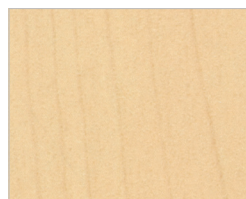
**5795**  
Camel Elm



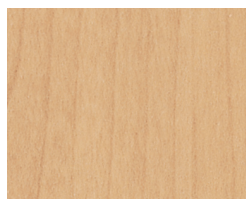
**8845**  
Bleached Legno



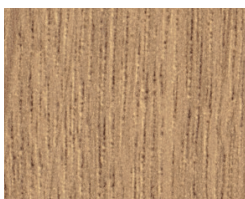
**8916**  
Blackened Fiberwood



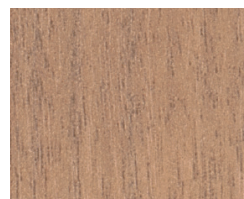
**86992**  
Hardrock Maple



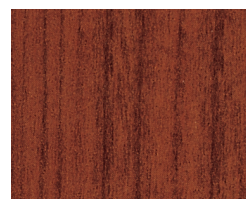
**7012**  
Amber Maple



**8677**  
Scandi Rift Oak



**6995**  
Cherry Walnut



**7759**  
Select Cherry



Formica Canada Inc. is located in St-jean-sur-Richelieu, Quebec, and employs more than 250 people.

Formica Canada is proud to be part of the Well Made Here local purchasing program.

As the inventor of high pressure laminate, Formica Corporation has always worked to provide innovative, high quality products. Efficient use of resources is at our core, and we have taken many steps to improve our environmental footprint - from reusing the water in our presses to incorporating recycled materials into our surfacing products. We are committed to a long-term planning horizon that includes becoming an industry-leading environmental steward.



For larger laminate sample, please visit:  
[cayugadisplays.com](http://cayugadisplays.com) 1-800-839-5536  
[formica.com](http://formica.com) 1-800-FORMICA™

# WOOD STAINS

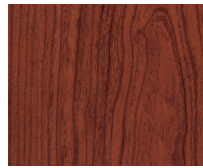
## CAYUGA STANDARD WOOD GRAINS



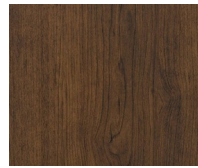
**Oiled Cherry**  
Match to Pionite/Panolam  
WC421 (Oiled Cherry)



**Wild Cherry**  
Match to Formica 5904-43  
(Wild Cherry)



**Select Cherry**  
Match to Formica 7759  
(Select Cherry)



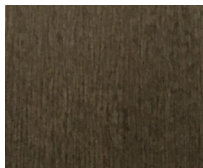
**Choco Cherry**  
Match to Panval/Uniboard  
207 (Choco Cherry)



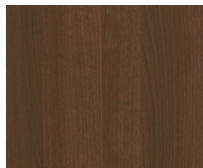
**Natural Maple**  
Match to Formica 86992-58  
(Hardrock Maple)



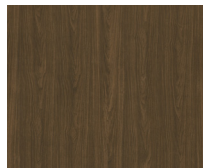
**Pearwood**  
Match to Pionite/Panolam  
WX031 (Pearwood)



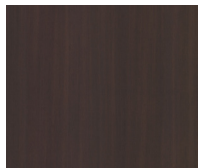
**Weathered Wood**  
Match to Formica 8909-NF  
(Cascara Teakwood)



**Concerto**  
Match to Arborite T485/  
Tafisa L485 (Concerto)



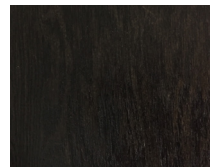
**Danish Walnut**  
Match to Arborite W305  
(Parliament Walnut)



**Witchcraft**  
Match to Pionite/Panolam  
WX421 (Witchcraft)



**Iron Mountain**  
Match to Formica 912-58  
(Storm)



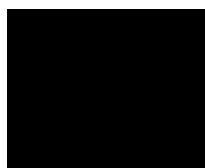
**Baloil**  
Match to Formica 6414 NG  
(Black Riftwood)

\*Refer to physical swatches for a true representation of colors, above images may appear slightly different than actual samples.\*

# PAINTED METAL

- **Standard products in stock**
- **RAL Program** colours not listed are also available upon request
- **Non-RAL Program** colours have long lead times and could affect deliver date

## CAYUGA STOCK COLOURS



Cayuga Black



Cayuga White

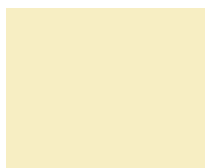
Cayuga black and white colours come in a textured finish.

Matte finish is available upon request.

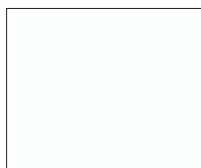
## RAL STOCK COLOURS



Traffic Blue  
Ral 5017



Cream  
Ral 9001



Pure White  
Ral 9010



Traffic Orange  
Ral 2009



Pebble Grey  
Ral 7032



Basalt Grey  
Ral 7012



Traffic Grey  
Ral 7042



Quartz Grey  
Ral 7039



Traffic Red  
Ral 3020



# HOW TO ORDER

We'll help you select the right case for your requirements.  
The steps below will help us to serve you best.

- 1 Choose the showcase that meets your display requirements from the product specification sheets.
- 2 Review the options table found on the specification sheet and make your selections of the options provided.
- 3 Select from the large pallet of colours found on the last five pages of the brochure, or choose a stainless steel, standard black or white for the exterior finish of your showcase.
- 4 E-mail your request for a quote to your Cayuga sales representative or [sales@cayugadisplays.com](mailto:sales@cayugadisplays.com) and we will quickly respond to your request. Please include your full contact information in case we have any questions.

## Contact the inside sales team

### Cayuga Displays

E: [sales@cayugadisplays.com](mailto:sales@cayugadisplays.com)

T: 1-800-839-5536

F: 1-905-772-3179



**T: 800.839.5536 F: 905.772.3179**

**E: [sales@cayugadisplays.com](mailto:sales@cayugadisplays.com)**

**A: 88 Talbot St E, PO Box 130  
Cayuga, ON N0A 1E0**